

UNITED STATES PUBLIC LAND SURVEY CORNER CERTIFICATE

OF

Land Survey Monuments situated in Section 3, Township 76 North, Range 27 West, of the Fifth Principal Meridian, Madison County, Iowa. Previously recorded in Does Not Apply in County Recorder's Office.

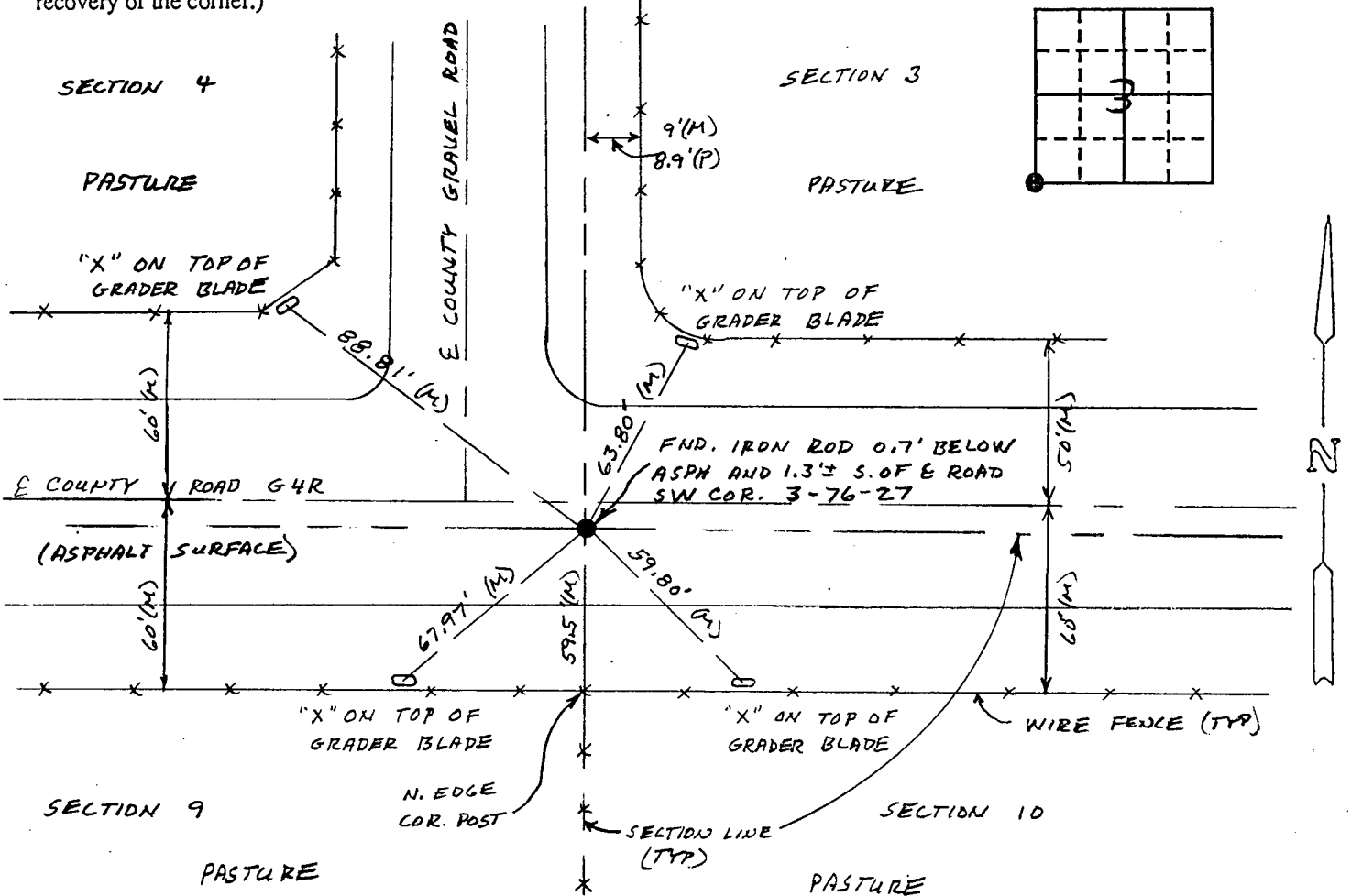
(book, page, document number, etc.)

(Show reason for preparing this certificate, the evidence and detailed procedures used in establishing the corner positions and monumentation found or placed.)

Monument Description and Remarks: No current corner certificate. The corner had previously been tied by the County, but the records were lost. Road records indicated an iron rod at the corner prior to paving the road. A bent iron rod was found 0.7' below the asphalt. The rod matched dimensions on the road records, section and right-of-way lines. The rod was accepted.

PLAN - VIEW

(Show a minimum of three reference ties to durable physical objects, relevant monuments and physical conditions that will enable recovery of the corner.)



(M) = Measured dimension

(P) = Record dimension

NOTE: ALL GRADER BLADES FND W/'X' CUT ON TOP

I hereby certify that the survey work was completed and this certificate was prepared by me or under my direct personal supervision and that I am a duly registered land surveyor under the laws of the state of Iowa.

Signature: William M. Austin
Name typed or printed: William M. Austin
Date: 10-30-92 Reg. No. 10313



Corners	List Corners to be Indexed		
	Section	Twp	Range
SW	3	76N	27W
SE	4	76N	27W
NE	9	76N	27W
NW	10	76N	27W

Fee \$5.00

FILED NO: **1154**

Corner

BOOK 1 PAGE 127

92 NOV -2 PM 2:47

MICHELLE UTSLER
RECORDER
MADISON COUNTY, IOWA

COMPARED

IND.
REC.
PAGE