

UNITED STATES PUBLIC LAND SURVEY CORNER CERTIFICATE

OF

3

76 North

Land Survey Monuments situated in Section _____, Township _____, Range _____
27 West _____, of the Fifth Principal Meridian, _____ County, Iowa.
Previously recorded in Does Not Apply in County Recorder's Office.

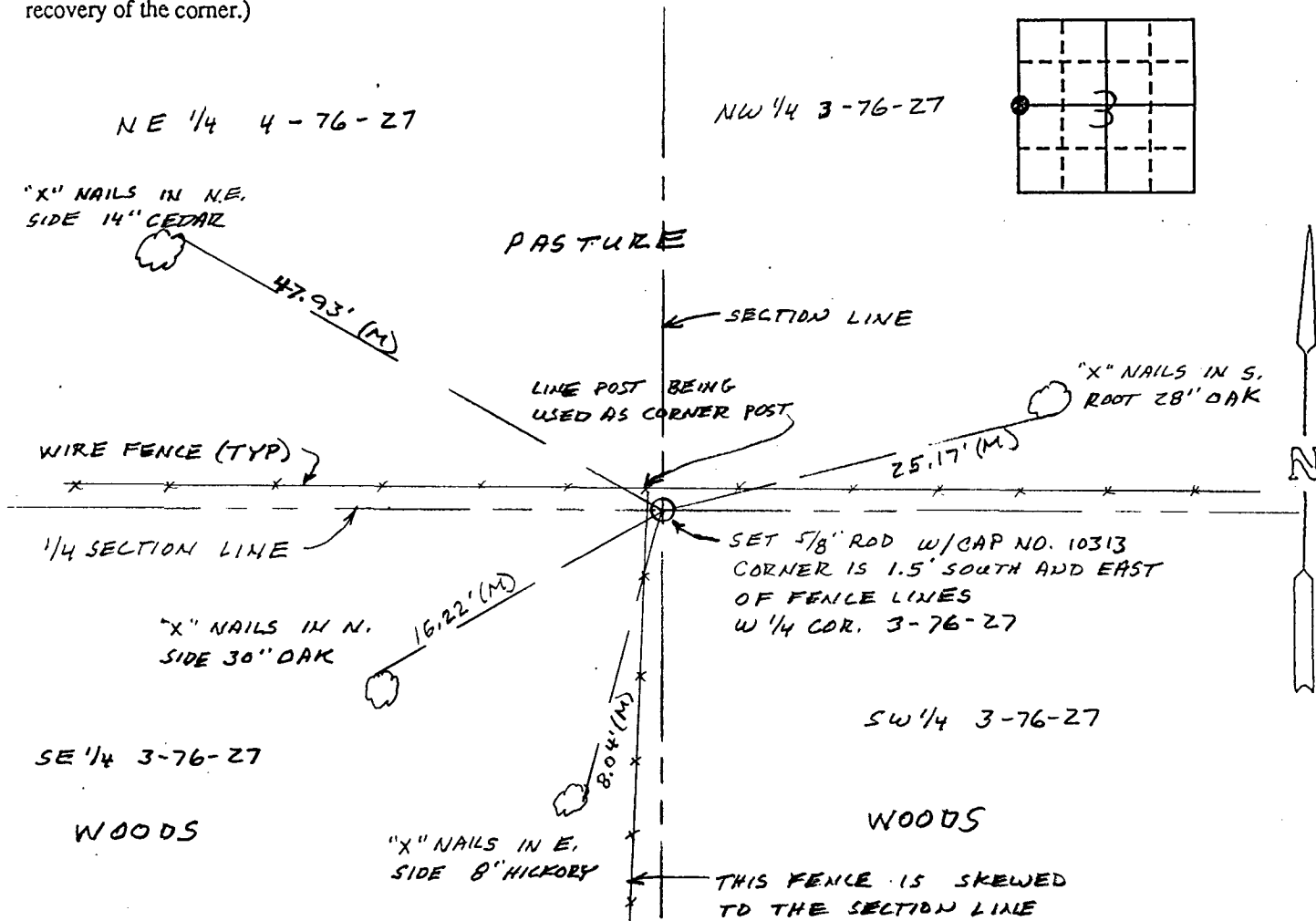
(book, page, document number, etc.)

(Show reason for preparing this certificate, the evidence and detailed procedures used in establishing the corner positions and monumentation found or placed.)

Monument Description and Remarks: No current corner certificate. The corner was established by single proportionate measurement between the NW corner and the SW corner of Section 3. The location agreed with old occupation lines.

PLAN - VIEW

(Show a minimum of three reference ties to durable physical objects, relevant monuments and physical conditions that will enable recovery of the corner.)

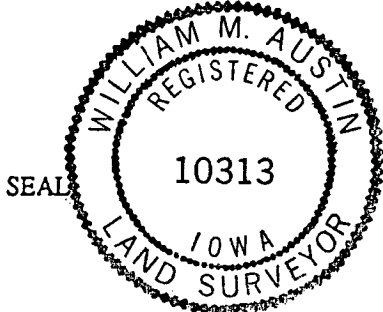


(M) = Measured dimension (P) = Record dimension NOTE: ALL TREES BLAZED

I hereby certify that the survey work was completed and this certificate was prepared by me or under my direct personal supervision and that I am a duly registered land surveyor under the laws of the state of Iowa.

Signature: William M. Austin
Name typed or printed: William M. Austin

Date: 10-30-92 Reg. No. 10313



Corners	List Corners to be Indexed		
	Section	Twp	Range
W 1/4	3	76N	27W
E 1/4	4	76N	27W

COMPARED

Fee \$5.00 FILED NO. **1153**
Corner BOOK 1 PAGE 126

92 NOV -2 PH 2:46

IND.
REC.
PAGE

MICHELLE UTSLER
RECORDER
MADISON COUNTY, IOWA