

# UNITED STATES PUBLIC LAND SURVEY CORNER CERTIFICATE

OF

Land Survey Monuments situated in Section 3, Township 76 North, Range 27 West, of the Fifth Principal Meridian, Madison County, Iowa. Previously recorded in Does Not Apply in County Recorder's Office.

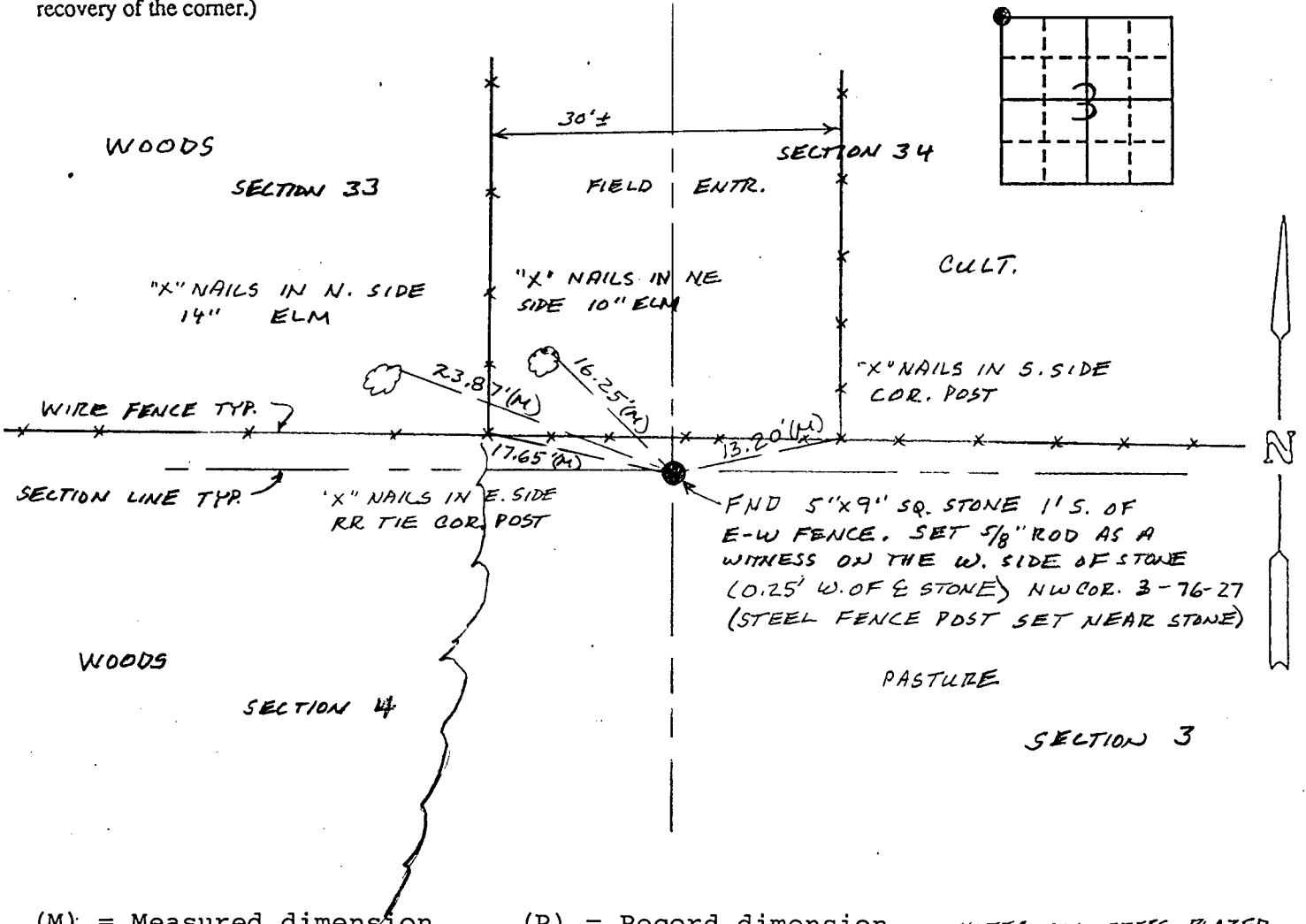
(book, page, document number, etc.)

(Show reason for preparing this certificate, the evidence and detailed procedures used in establishing the corner positions and monumentation found or placed.)

Monument Description and Remarks: No current corner certificate. County records indicated a stone at the corner. A 5" x 9" stone was found. The stone fit existing section lines and occupation lines. The stone was accepted.

## PLAN - VIEW

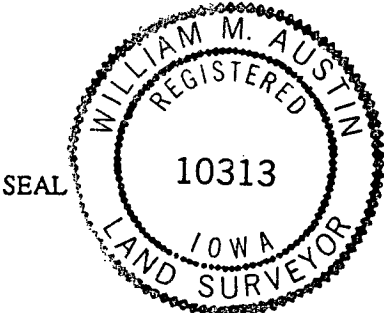
(Show a minimum of three reference ties to durable physical objects, relevant monuments and physical conditions that will enable recovery of the corner.)



(M) = Measured dimension (P) = Record dimension NOTE: ALL TREES BLAZED

I hereby certify that the survey work was completed and this certificate was prepared by me or under my direct personal supervision and that I am a duly registered land surveyor under the laws of the state of Iowa.

Signature: William M. Austin  
Name typed or printed: William M. Austin  
Date: 10-30-92 Reg. No. 10313



Corners	Section	Twp	Range
NW	3	76N	27W
NE	4	76N	27W
SW	34	77N	27W
SE	33	77N	27W

Fee \$5.00

FILED NO. 1152  
Corner  
BOOK 1 PAGE 125

92 NOV -2 PM 2:45

MICHELLE UTSLER  
RECORDER  
MADISON COUNTY, IOWA

IND.   
REC.   
PAGE