

# UNITED STATES PUBLIC LAND SURVEY CORNER CERTIFICATE

OF

Land Survey Monuments situated in Section 23, Township 76 North, Range 26 West, of the Fifth Principal Meridian, Madison County, Iowa. Previously recorded in N/A in County Recorder's Office.

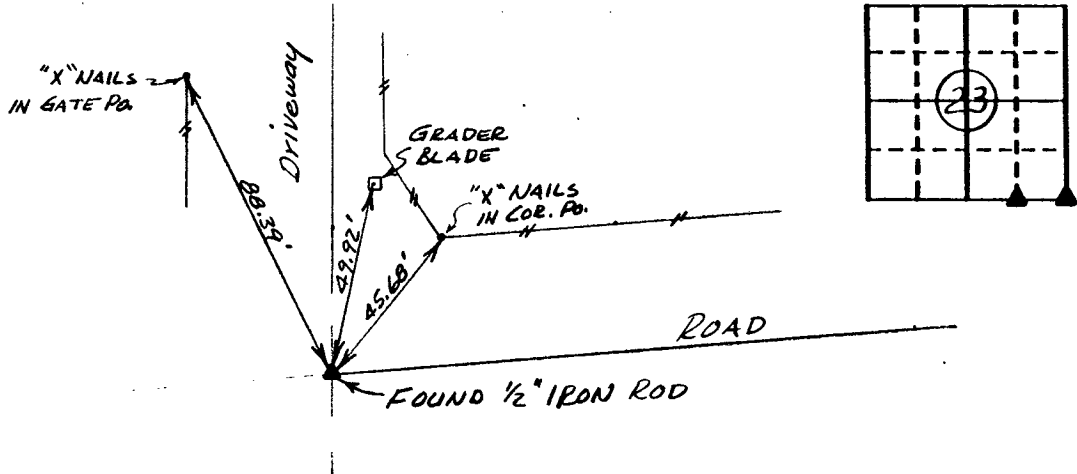
(book, page, document number, etc.)

(Show reason for preparing this certificate, the evidence and detailed procedures used in establishing the corner positions and monumentation found or placed.)

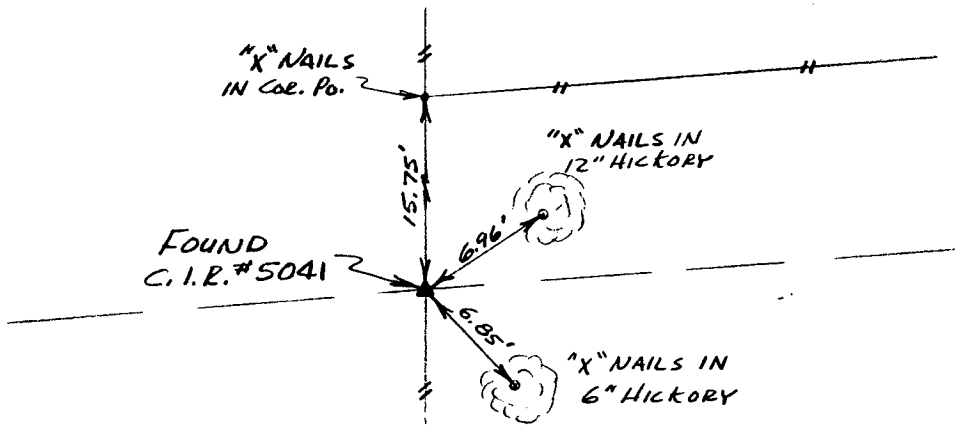
Monument Description and Remarks: \_\_\_\_\_

## PLAN - VIEW

(Show a minimum of three reference ties to durable physical objects, relevant monuments and physical conditions that will enable recovery of the corner.)



Ref. to SE. COR., SECTION 23, T76N, R26W.



Ref. to SW. COR., SE. 1/4 SE. 1/4, SECTION 23, T76N, R26W.

I hereby certify that the survey work was completed and this certificate was prepared by me or under my direct personal supervision and that I am a duly registered land surveyor under the laws of the state of Iowa.

Signature: Charles T. Vance

Name typed or printed: Charles T. Vance, PE & LS

Date: 17 Dec. 1992 Reg. No. 5041

Corners	Section	Twp	Range
SE. COR.	23	76	26
SW. COR.	23	76	26
SE. 1/4 SE. 1/4			

COMPUTER



✓  
✓  
✓

FILED NO. 1573  
BOOK 1 PAGE 140

92 DEC 18 PM 2:09

Fee \$5.00

MICHELLE UTSLER  
RECORDER  
MADISON COUNTY, IOWA

COMPARED