

UNITED STATES PUBLIC LAND SURVEY CORNER CERTIFICATE

OF

Land Survey Monuments situated in Section 4, Township 75 North, Range 28 West, of the Fifth Principal Meridian, Madison County, Iowa.
Previously recorded in N/A in County Recorder's Office.

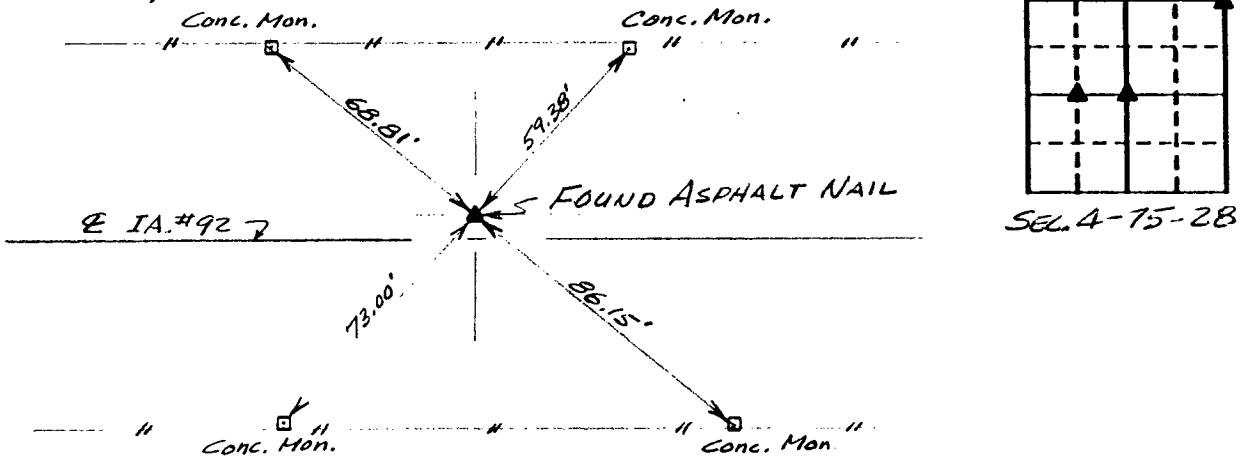
(book, page, document number, etc.)

(Show reason for preparing this certificate, the evidence and detailed procedures used in establishing the corner positions and monumentation found or placed.)

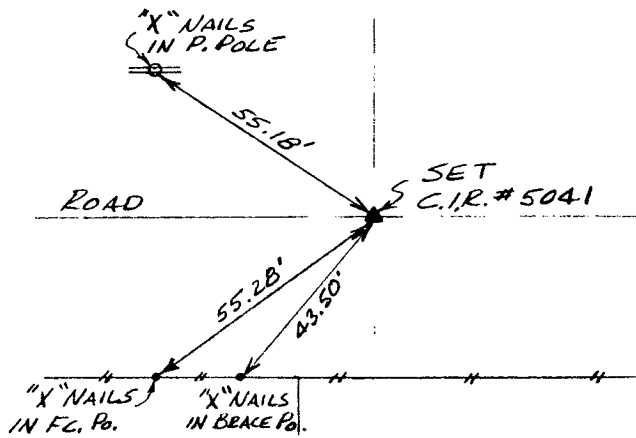
Monument Description and Remarks: _____

PLAN - VIEW

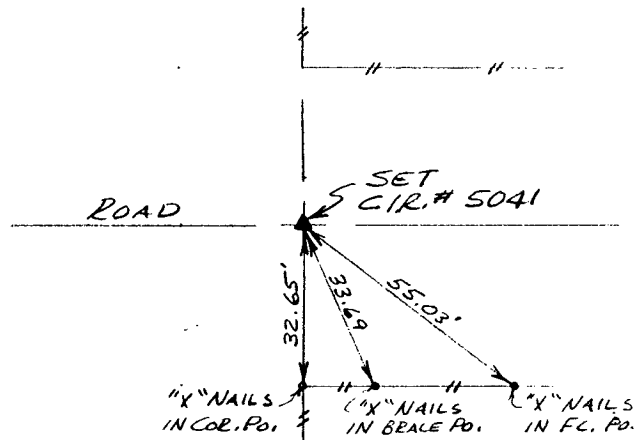
(Show a minimum of three reference ties to durable physical objects, relevant monuments and physical conditions that will enable recovery of the corner.)



Ref. to NE. COR., SECTION 4, T75N, R28W.



Ref. to SW. COR., SE. 1/4 NW. 1/4, SECTION 4, T75N, R28W.



Ref. to CENTER of SECTION 4, T75N, R28W.

I hereby certify that the survey work was completed and this certificate was prepared by me or under my direct personal supervision and that I am a duly registered land surveyor under the laws of the state of Iowa.

Signature: Charles T. Vance
Name typed or printed: Charles T. Vance, PE & LS
Date: 16 DEC. 1992 Reg. No. 5041



Corners	List Corners to be Indexed	Section	Twp	Range
NE. COR.		4	75	28
SW. COR.		4	75	28
SE. 1/4 NW. 1/4		4	75	28
CENTER		4	75	28

COMPARED

INT.
REC.
PAGE

FILED NO. **1571**

BOOK 1 PAGE 138

92 DEC 18 PM 2:07

Fee \$5.00

MICHELLE UTSLER
RECORDER
MADISON COUNTY, IOWA

COMPUTER