

UNITED STATES PUBLIC LAND SURVEY CORNER CERTIFICATE

OF

Land Survey Monuments situated in Section 13, Township 77 North, Range 27 West, of the Fifth Principal Meridian, Madison County, Iowa. Previously recorded in N/A in County Recorder's Office.

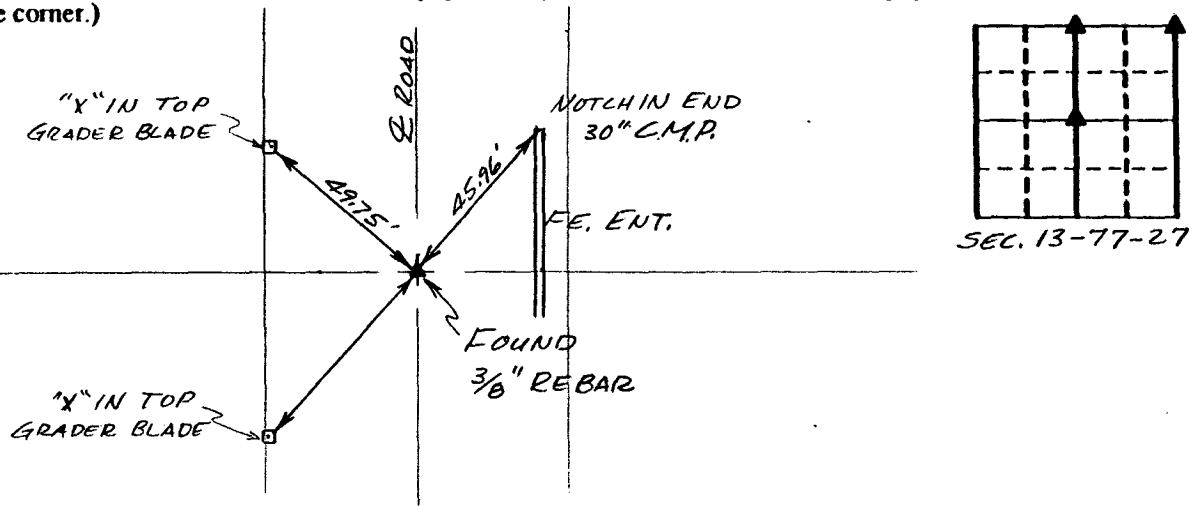
(book, page, document number, etc.)

(Show reason for preparing this certificate, the evidence and detailed procedures used in establishing the corner positions and monumentation found or placed.)

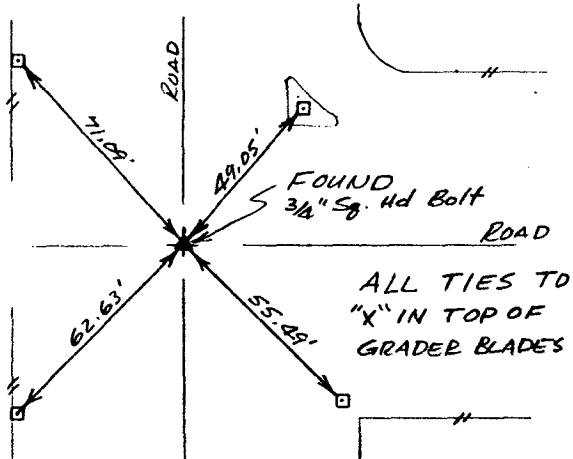
Monument Description and Remarks: _____

PLAN - VIEW

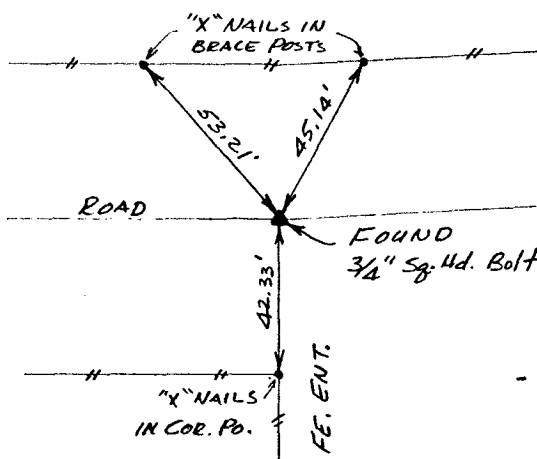
(Show a minimum of three reference ties to durable physical objects, relevant monuments and physical conditions that will enable recovery of the corner.)



Ref. to CENTER, SECTION 13, T77N, R27W



Ref. to N 1/4 COR., SECTION 13, T77N, R27W



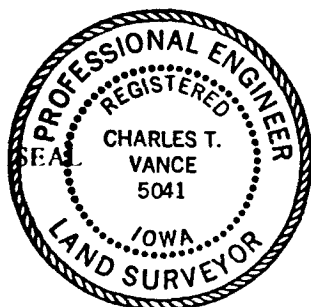
Ref. to NE COR., SECTION 13, T77N, R27W

I hereby certify that the survey work was completed and this certificate was prepared by me or under my direct personal supervision and that I am a duly registered land surveyor under the laws of the state of Iowa.

Signature: Charles T. Vance

Name typed or printed: Charles T. Vance, PE & LS

Date: 7 Aug. 1992 Reg. No. 5041



Corners	List Corners to be Indexed	Section	Twp	Range
CENTER	13 - 77 - 27			
N 1/4 COR.	13 - 77 - 27			
NE COR.	13 - 77 - 27			

FILED NO. 503

BOOK 1 PAGE 116

92 AUG 24 AM 11:17

MICHELLE UTSLER
RECORDER
MADISON COUNTY, IOWA

Fee \$5.00