

UNITED STATES PUBLIC LAND SURVEY CORNER CERTIFICATE

OF

Land Survey Monuments situated in Section 12, Township 76 North, Range 28 West, of the Fifth Principal Meridian, Madison County, Iowa.
 Previously recorded in N/A in County Recorder's Office.

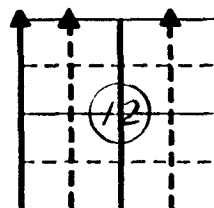
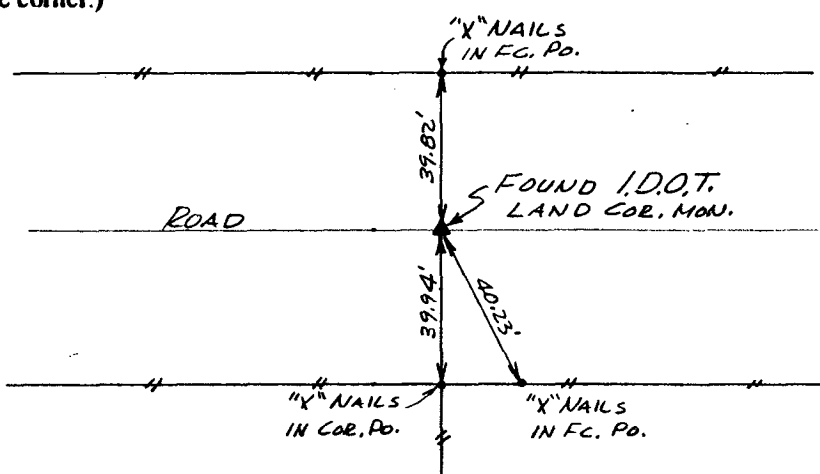
(book, page, document number, etc.)

(Show reason for preparing this certificate, the evidence and detailed procedures used in establishing the corner positions and monumentation found or placed.)

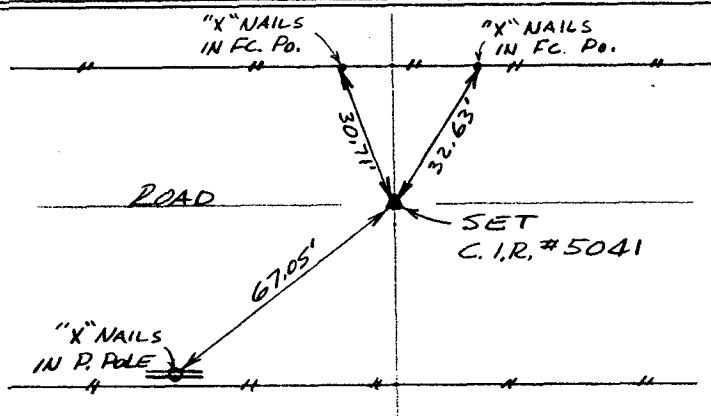
Monument Description and Remarks: _____

PLAN - VIEW

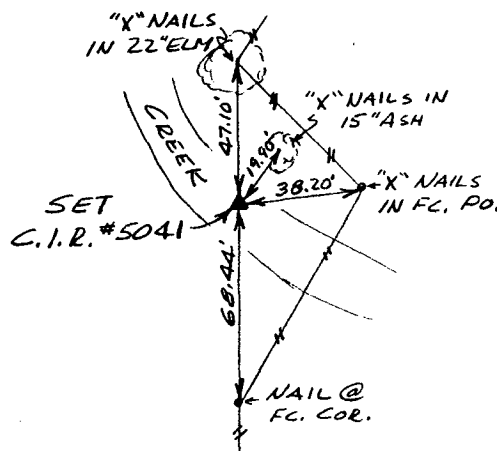
(Show a minimum of three reference ties to durable physical objects, relevant monuments and physical conditions that will enable recovery of the corner.)



Ref. to NW. COR., SECTION 12, T76N, R28W



Ref. to NW. COR., NE 1/4 NW 1/4, SECTION 12, T76N, R28W



Ref. to NE. COR., NW 1/4 NE 1/4, SECTION 12, T76N, R28W.

I hereby certify that the survey work was completed and this certificate was prepared by me or under my direct personal supervision and that I am a duly registered land surveyor under the laws of the state of Iowa.

Signature: Charles T. Vance
 Name typed or printed: Charles T. Vance, PE & LS
 Date: 6 Aug. 1992 Reg. No. 5041



Corners	List Corners to be Indexed	Section	Twp	Range
NW. COR.	12 - 76 - 28			
NW. COR.	12 - 76 - 28			
NE 1/4 NW 1/4	12 - 76 - 28			
NE. COR.	12 - 76 - 28			
NW 1/4 NE 1/4	12 - 76 - 28			

FILED NO. 502

COMPARED BOOK 1 PAGE 115

92 AUG 24 AM 11:16

Fee \$5.00

MICHELLE UTSLER
 RECORDER
 MADISON COUNTY, IOWA