

# UNITED STATES PUBLIC LAND SURVEY CORNER CERTIFICATE

OF

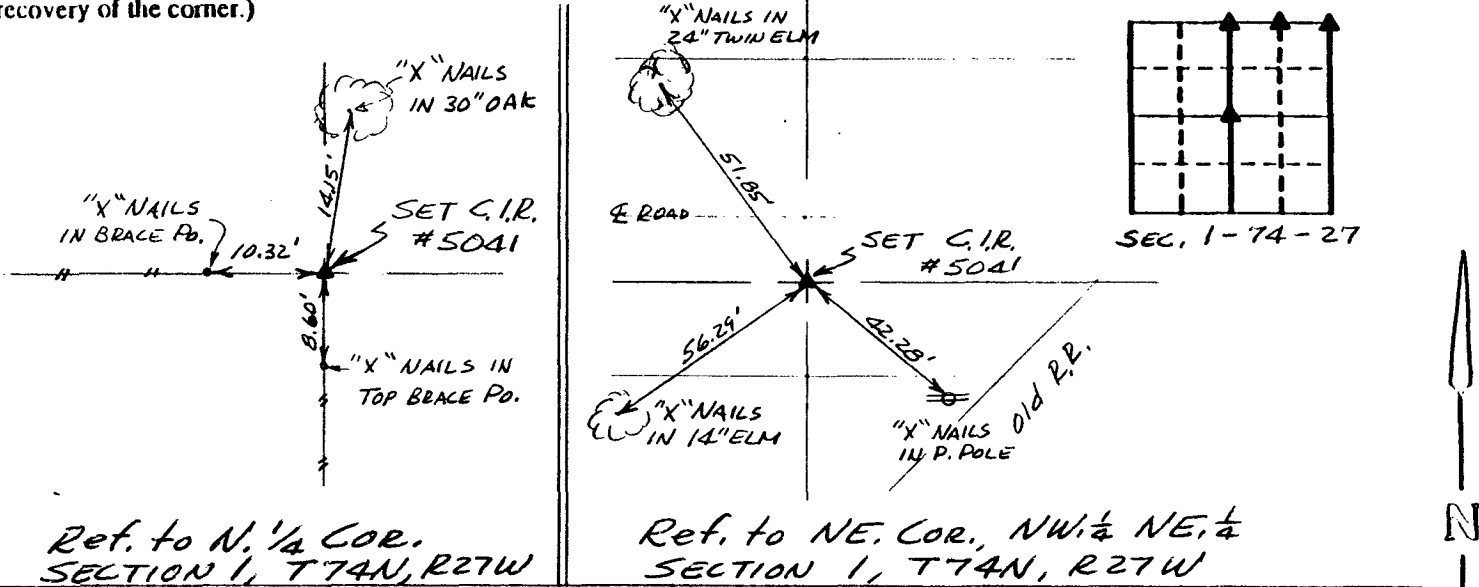
Land Survey Monuments situated in Section 1, Township 74 North, Range 27 West, of the Fifth Principal Meridian, Madison County, Iowa.  
 Previously recorded in N/A in County Recorder's Office.  
(book, page, document number, etc.)

(Show reason for preparing this certificate, the evidence and detailed procedures used in establishing the corner positions and monumentation found or placed.)

Monument Description and Remarks: \_\_\_\_\_

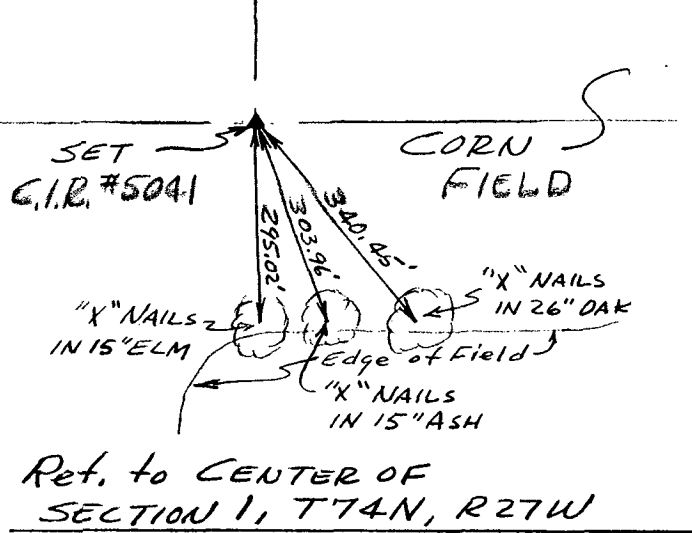
## PLAN - VIEW

(Show a minimum of three reference ties to durable physical objects, relevant monuments and physical conditions that will enable recovery of the corner.)

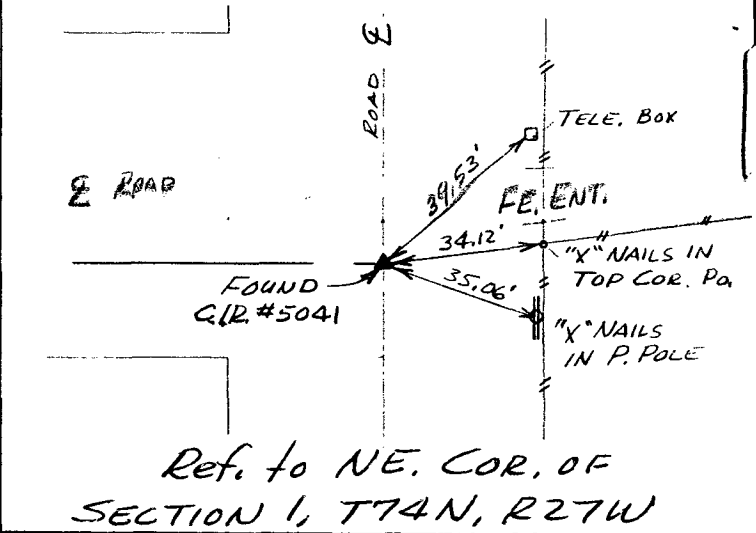


Ref. to N. 1/4 Cor. SECTION 1, T74N, R27W

Ref. to NE. Cor., NW 1/4 NE 1/4 SECTION 1, T74N, R27W



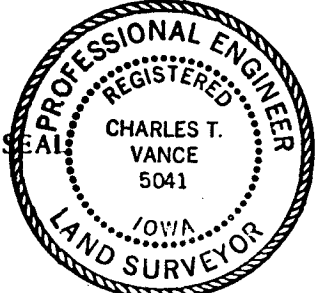
Ref. to CENTER OF SECTION 1, T74N, R27W



Ref. to NE. Cor. OF SECTION 1, T74N, R27W

I hereby certify that the survey work was completed and this certificate was prepared by me or under my direct personal supervision and that I am a duly registered land surveyor under the laws of the state of Iowa.

Signature: Charles T. Vance  
 Name typed or printed: Charles T. Vance, PE & LS  
 Date: 14 Aug, 1992 Reg. No. 5041



Corners	List Corners to be Indexed		
	Section	Twp	Range
N. 1/4 COR	1	74	27
(NE. COR. NW. 1/4 NE. 1/4)	1	74	27
CENTER	1	74	27
NE. COR.	1	74	27
FILED NO. <u>500</u>			
COMPARED		BOOK <u>1</u> PAGE <u>113</u>	
		92 AUG 24 AM 11:14	
Fee \$5.00		MICHELLE UTSLER RECORDER MADISON COUNTY, IOWA	