

UNITED STATES PUBLIC LAND SURVEY CORNER CERTIFICATE

OF

Land Survey Monuments situated in Section 32, Township 77 North, Range 28 West, of the Fifth Principal Meridian, Madison County, Iowa. Previously recorded in N/A in County Recorder's Office.

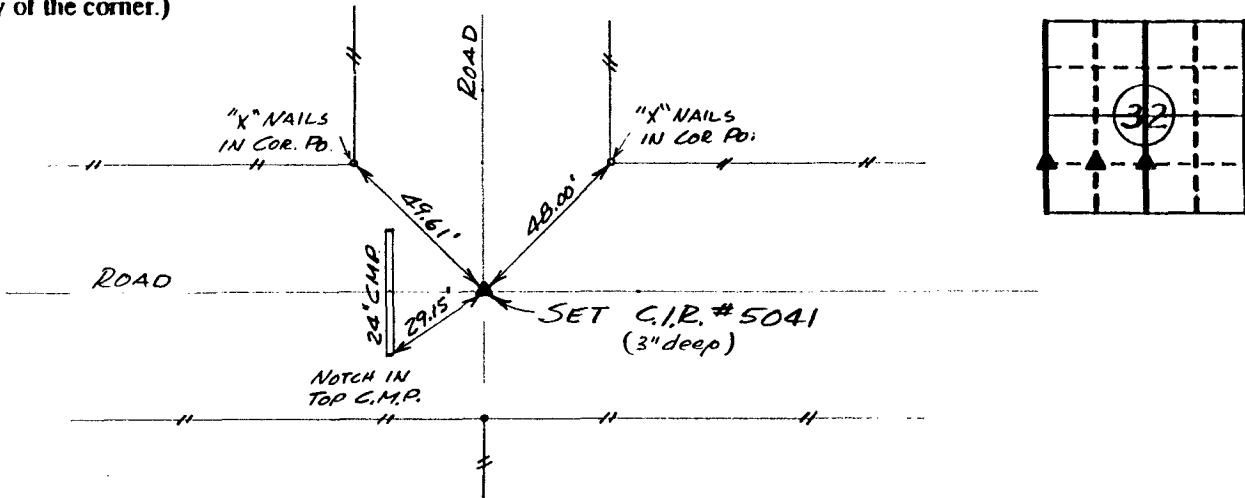
(book, page, document number, etc.)

(Show reason for preparing this certificate, the evidence and detailed procedures used in establishing the corner positions and monumentation found or placed.)

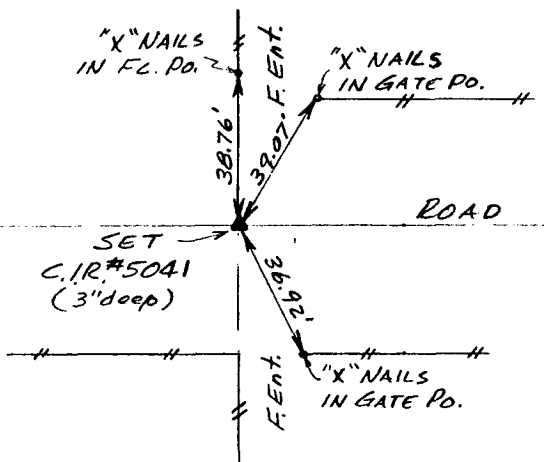
Monument Description and Remarks: _____

PLAN - VIEW

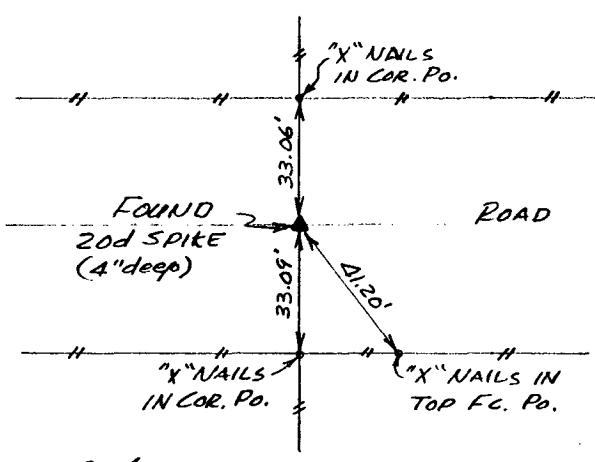
(Show a minimum of three reference ties to durable physical objects, relevant monuments and physical conditions that will enable recovery of the corner.)



Ref. to SW. COR., NW. 1/4 SW. 1/4, SECTION 32, T 77N, R 28W



Ref. to SE. COR., NW. 1/4 SW. 1/4, SECTION 32, T 77N, R 28W



Ref. to SE. COR., NE. 1/4 SW. 1/4, SECTION 32, T 77N, R 28W

I hereby certify that the survey work was completed and this certificate was prepared by me or under my direct personal supervision and that I am a duly registered land surveyor under the laws of the state of Iowa.

Signature: Charles T. Vance

Name typed or printed: Charles T. Vance, PE & LS

Date: 23 July 1992 Reg. No. 5041



COMPUTER

List Corners to be Indexed
Corners Section Twp Range

SW. COR. NW. 1/4 SW. 1/4 32 - 77 - 28

SE. COR. NW. 1/4 SW. 1/4 32 - 77 - 28

SE. COR. NE. 1/4 SW. 1/4 32 - 77 - 28

REC \$ 5.00
AUD \$ _____

FILED NO. 218

BOOK 1 PAGE 111

92 JUL 28 AM 11:48

COMPARED

MICHELLE UTSLER
RECORDED
MADISON COUNTY, IOWA