

UNITED STATES PUBLIC LAND SURVEY CORNER CERTIFICATE

OF

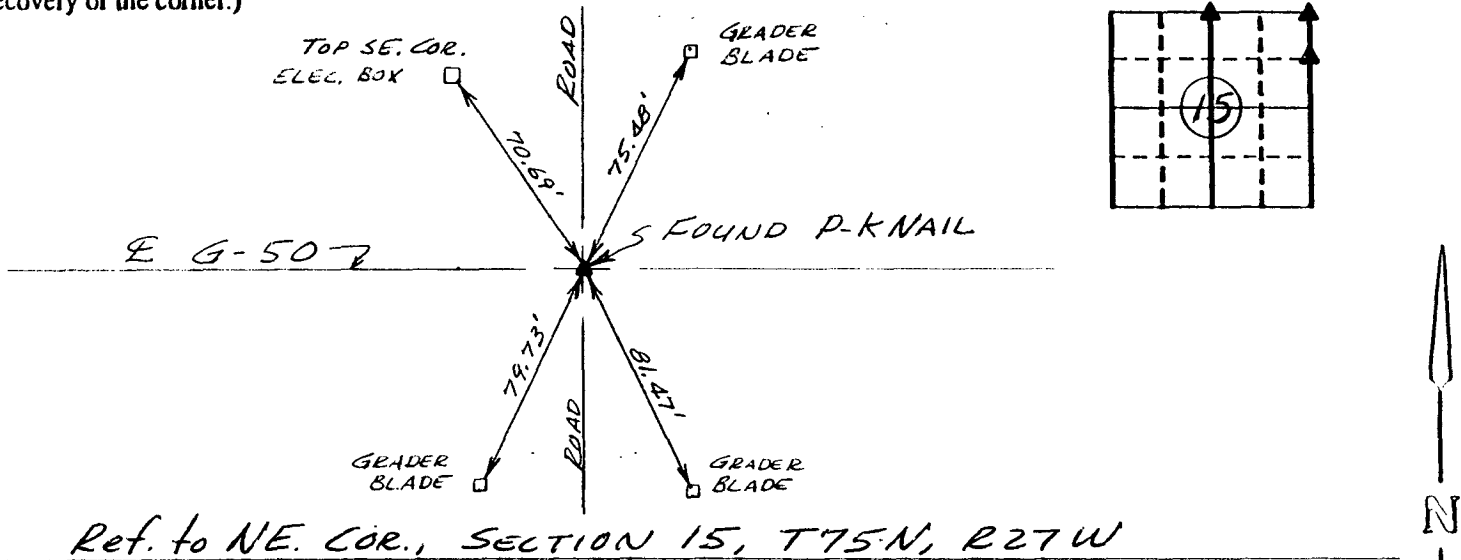
Land Survey Monuments situated in Section 15, Township 75 North, Range 27 West, of the Fifth Principal Meridian, Madison County, Iowa.  
Previously recorded in Book 1 Page 70 in County Recorder's Office.  
(book, page, document number, etc.)

(Show reason for preparing this certificate, the evidence and detailed procedures used in establishing the corner positions and monumentation found or placed.)

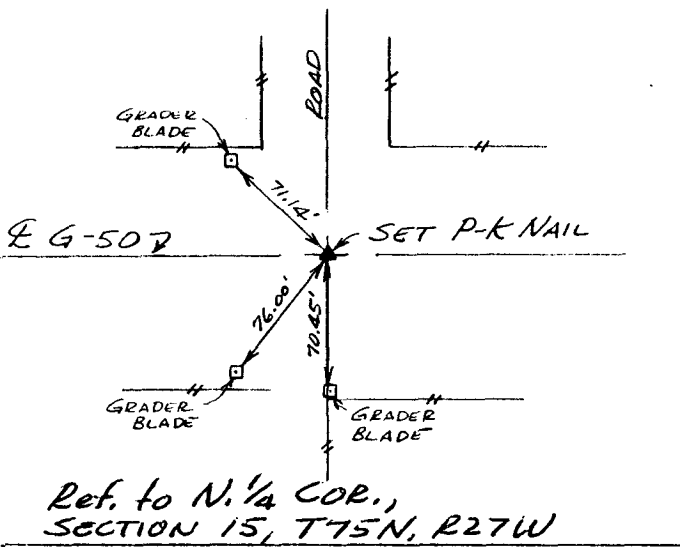
Monument Description and Remarks: \_\_\_\_\_  
\_\_\_\_\_  
\_\_\_\_\_  
\_\_\_\_\_

PLAN - VIEW

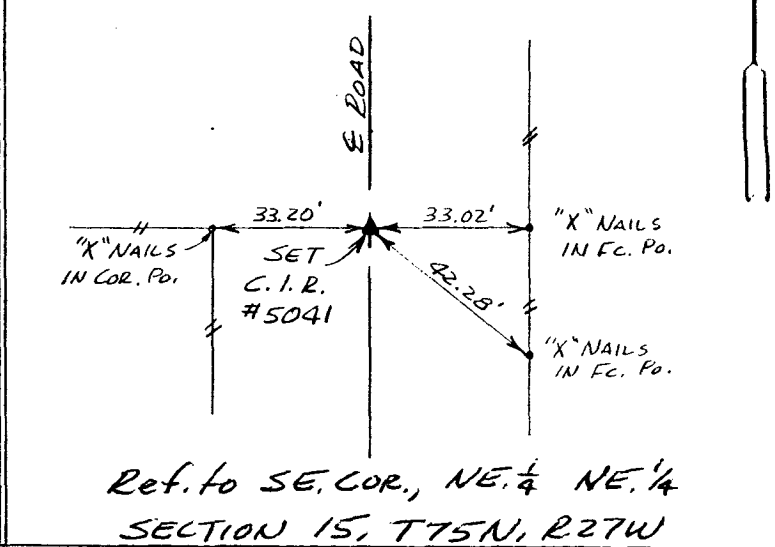
(Show a minimum of three reference ties to durable physical objects, relevant monuments and physical conditions that will enable recovery of the corner.)



Ref. to NE. COR., SECTION 15, T75N, R27W



Ref. to N. 1/4 COR., SECTION 15, T75N, R27W



Ref. to SE. COR., NE. 1/4 NE. 1/4 SECTION 15, T75N, R27W

I hereby certify that the survey work was completed and this certificate was prepared by me or under my direct personal supervision and that I am a duly registered land surveyor under the laws of the state of Iowa.

Signature: Charles T. Vance  
Name typed or printed: Charles T. Vance, PE & LS  
Date: 27 May 1992 Reg. No. 5041

Corners	List Corners to be Indexed		
	Section	Twp	Range
NE. COR.	15	75	27
N. 1/4 COR.	15	75	27
SE. COR.	15	75	27
NE. 1/4 NE. 1/4	15	75	27

REC \$ 5.00  
AUD \$ \_\_\_\_\_  
IND. 1/1  
REC. 1/1  
PAGE 1/1

FILED NO. 215  
BOOK 1 PAGE 108  
92 JUL 28 AM 11:45  
MICHELLE UTSLER  
RECORDER  
MADISON COUNTY, IOWA



COMPUTER

COMPARED