

UNITED STATES PUBLIC LAND SURVEY CORNER CERTIFICATE

OF

Land Survey Monuments situated in Section 14, Township 75 North, Range 27 West, of the Fifth Principal Meridian, Madison County, Iowa.
Previously recorded in N/A in County Recorder's Office.

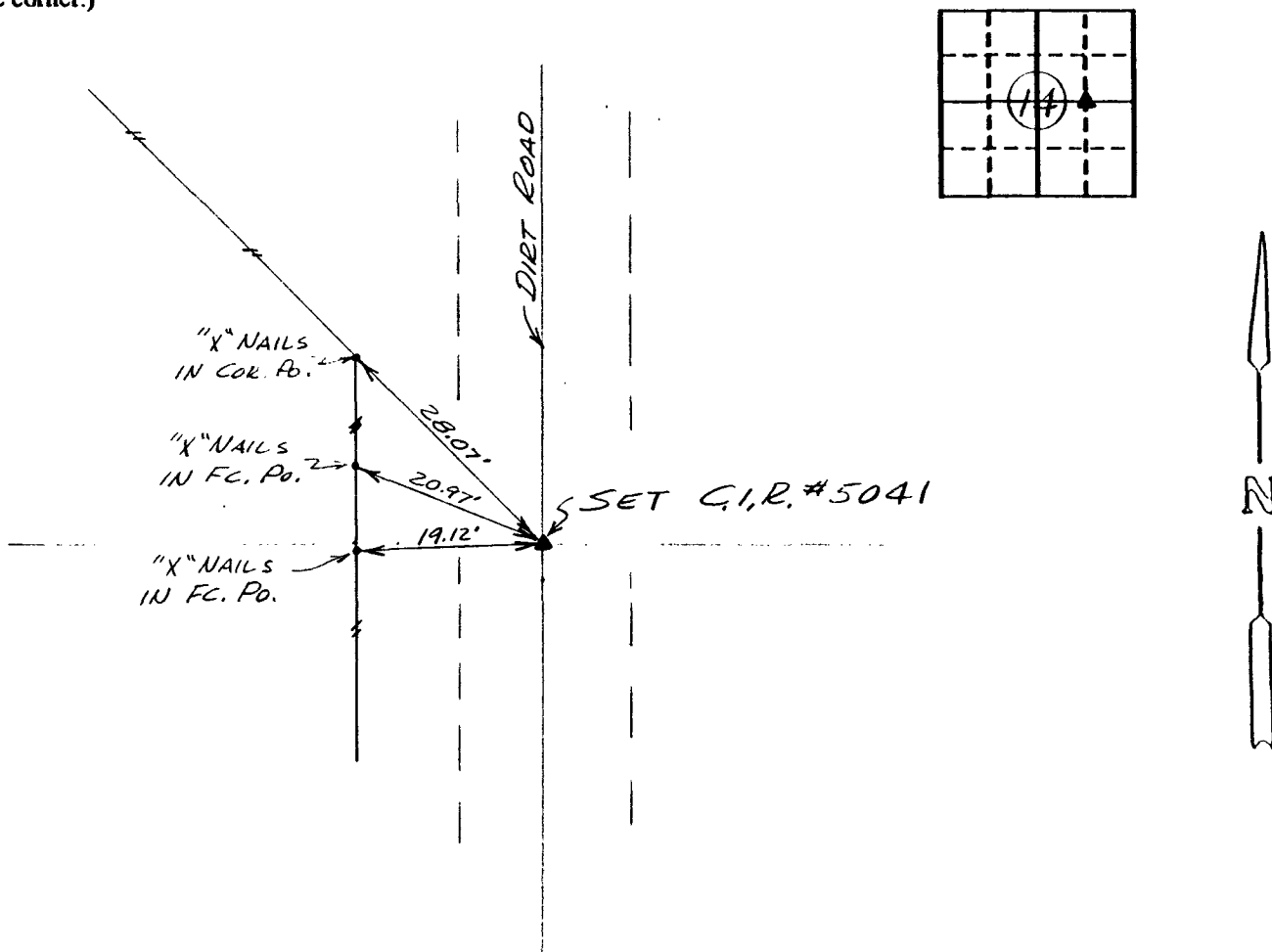
(book, page, document number, etc.)

(Show reason for preparing this certificate, the evidence and detailed procedures used in establishing the corner positions and monumentation found or placed.)

Monument Description and Remarks: Corner set from survey by Cleo McCall dated: 31 Aug. 1903

PLAN - VIEW

(Show a minimum of three reference ties to durable physical objects, relevant monuments and physical conditions that will enable recovery of the corner.)



Ref. to SE. COR., SW. 1/4 NE. 1/4 SECTION 14, T75N, R27W

I hereby certify that the survey work was completed and this certificate was prepared by me or under my direct personal supervision and that I am a duly registered land surveyor under the laws of the state of Iowa.

Signature: Charles T. Vance
Name typed or printed: Charles T. Vance, PE & LS
Date: 4 June 1992 Reg. No. 5041

Corners	List Corners to be Indexed	Section	Twp	Range
SE. COR SW. 1/4 NE. 1/4		14	75	27

REC \$ 5.00
AUD \$ _____

FILED NO. 214

BOOK 1 PAGE 107

92 JUL 28 AM 11:44

COMPARED
COMPUTER

MICHELLE UTSLER
RECORDER
MADISON COUNTY, IOWA

