

# UNITED STATES PUBLIC LAND SURVEY CORNER CERTIFICATE

OF

Land Survey Monuments situated in Section 18, Township 75 North, Range 26 West, of the Fifth Principal Meridian, Madison County, Iowa. Previously recorded in N/A in County Recorder's Office.

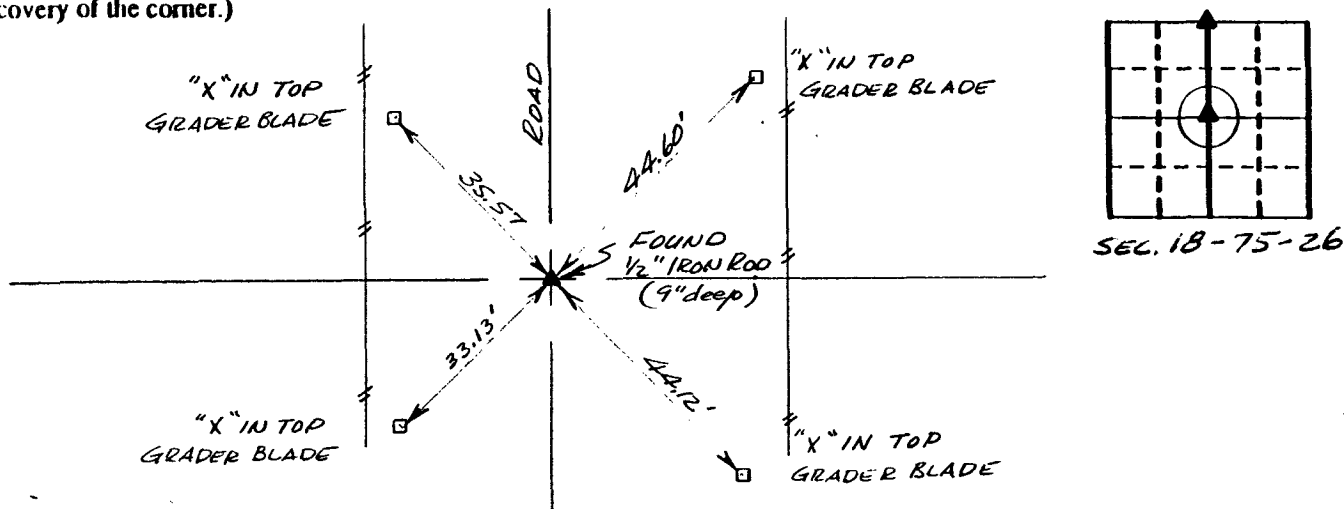
(book, page, document number, etc.)

(Show reason for preparing this certificate, the evidence and detailed procedures used in establishing the corner positions and monumentation found or placed.)

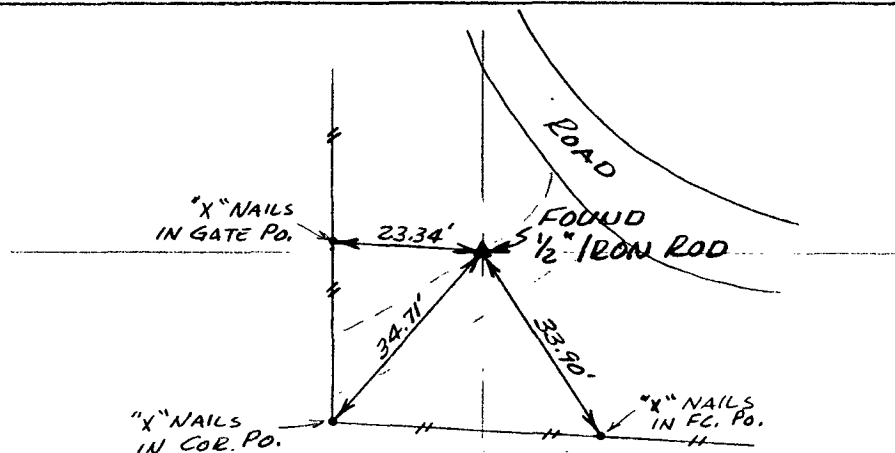
Monument Description and Remarks: \_\_\_\_\_

## PLAN - VIEW

(Show a minimum of three reference ties to durable physical objects, relevant monuments and physical conditions that will enable recovery of the corner.)



Ref. to N. 1/4 COR., SECTION 18, T 75N, R 26W



Ref. to CENTER, SECTION 18, T 75N, R 26W

I hereby certify that the survey work was completed and this certificate was prepared by me or under my direct personal supervision and that I am a duly registered land surveyor under the laws of the state of Iowa.

Signature: Charles T. Vance  
Name typed or printed: Charles T. Vance, PE & LS

Date: 21 July 1992 Reg. No. 5041

List Corners to be Indexed  
Corners Section Twp Range

N. 1/4 COR. 18 - 75 - 26

CENTER 18 - 75 - 26

REC \$ 5.00

AUD \$ -

COMPUTER

FILED NO. 212

BOOK 1 PAGE 105

92 JUL 28 AM 11:42

MICHELLE UTSLER  
RECORDER  
MADISON COUNTY, IOWA

COMPARED

