

*Returned Originals*  
*74-25 not Johnson Co.*  
SLSI 9-90

# UNITED STATES PUBLIC LAND SURVEY CORNER CERTIFICATE

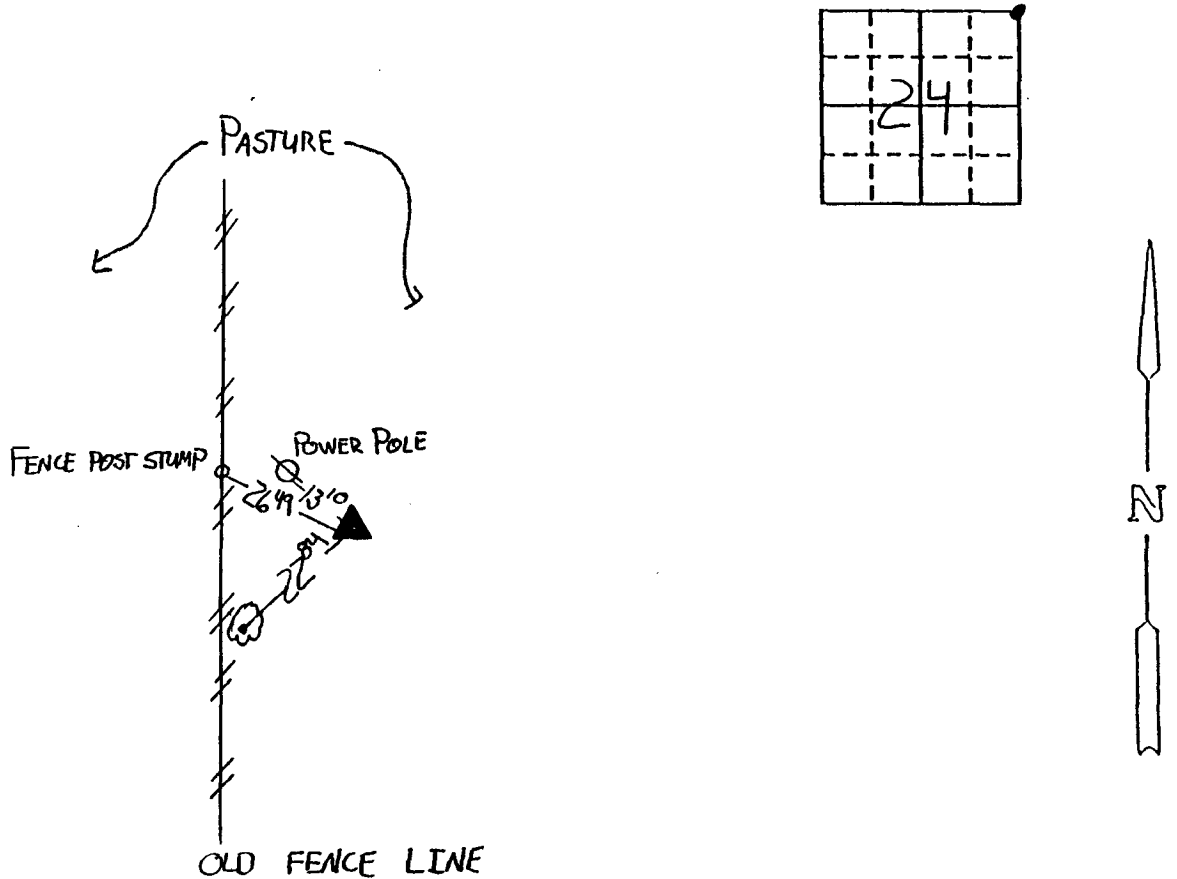
OF  
Land Survey Monuments situated in Section 24, Township 74, Range 25, of the Fifth Principal Meridian, MADISON County, Iowa.  
Previously recorded in DOES NOT APPLY in County Recorder's Office.  
(book, page, document number, etc.)

(Show reason for preparing this certificate, the evidence and detailed procedures used in establishing the corner positions and monumentation found or placed.)

Monument Description and Remarks: FOUND CONCRETE MONUMENT TWO FEET DEEP, WITH REBAR IN CENTER. MONUMENT WAS LOCATED FROM PREVIOUSLY RECORDED TIES.

## PLAN - VIEW

(Show a minimum of three reference ties to durable physical objects, relevant monuments and physical conditions that will enable recovery of the corner.)



ALL TIES 60d "X" NAILS

I hereby certify that the survey work was completed and this certificate was prepared by me or under my direct personal supervision and that I am a duly registered land surveyor under the laws of the state of Iowa.

Signature: Michael G Geier  
Name typed or printed: Michael G Geier, L.S.

Date: 8-19-92 Reg. No. 11804

Corners	List Corners to be Indexed Section	Twp	Range
N.E. COR	24	74	25

FILED NO. 676  
Corner Cert  
BOOK 1 PAGE 120

92 SEP 14 PM 4: 09

MICHELLE UTSLER  
RECORDER  
MADISON COUNTY, IOWA

REC \$ 5.00

AUD \$ -

SEAL

