

UNITED STATES PUBLIC LAND SURVEY CORNER CERTIFICATE

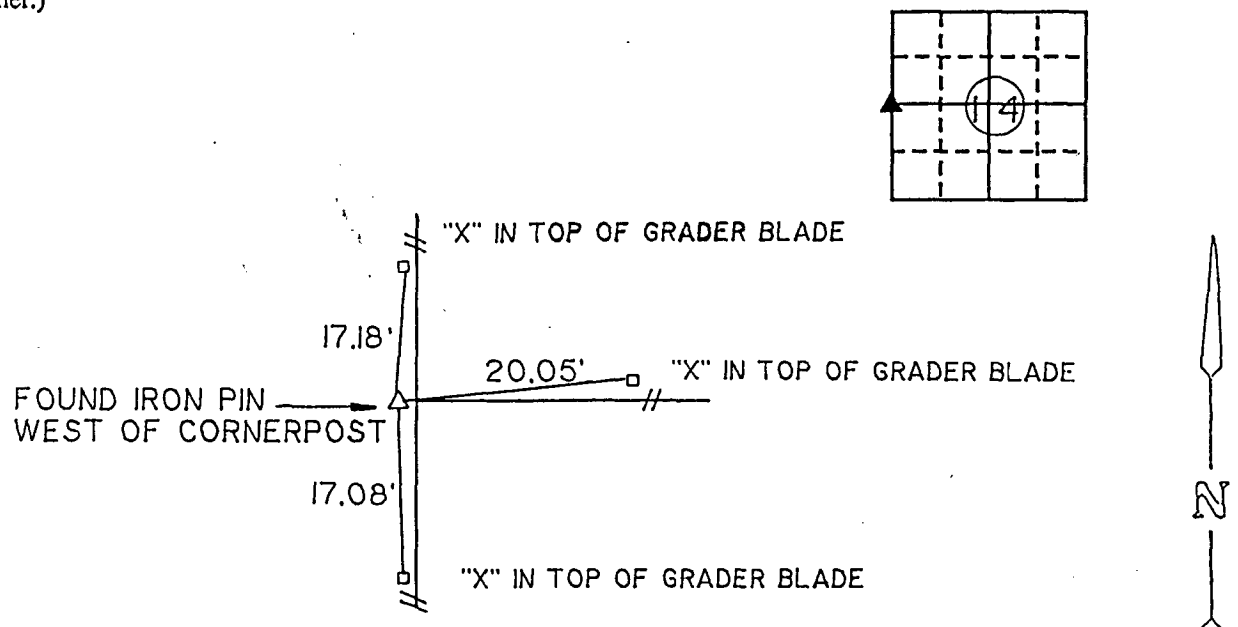
OF

Land Survey Monuments situated in Section 14, Township 76 NORTH, Range 28 WEST, of the Fifth Principal Meridian, MADISON County, Iowa.
Previously recorded in N/A in County Recorder's Office.
(book, page, document number, etc.)

(Show reason for preparing this certificate, the evidence and detailed procedures used in establishing the corner positions and monumentation found or placed.)
Monument Description and Remarks: FOUND 1/2" IRON PIN WEST OF CORNERPOST.

PLAN - VIEW

(Show a minimum of three reference ties to durable physical objects, relevant monuments and physical conditions that will enable recovery of the corner.)



COMPARED

FILED NO. **3050**

BOOK 1 PAGE 91

92 JUN 16 PM 3: 28

IND
REC
PAGE

MICHELLE UTSLER
RECORDER
MADISON COUNTY, IOWA

No Fee

I hereby certify that the survey work was completed and this certificate was prepared by me or under my direct personal supervision and that I am a duly registered land surveyor under the laws of the state of Iowa.

Signature: J. Brian Morrissey
Name typed or printed: J. Brian Morrissey
Date: 6/8/92 Reg. No. 7995

Corners	List Corners to be Indexed Section	Twp	Range
W 1/4 COR.	14	76	28

SEAL

