

UNITED STATES PUBLIC LAND SURVEY CORNER CERTIFICATE

OF

Land Survey Monuments situated in Section 22, Township 77 North, Range 28 West, of the Fifth Principal Meridian, Madison County, Iowa. Previously recorded in N/A in County Recorder's Office.

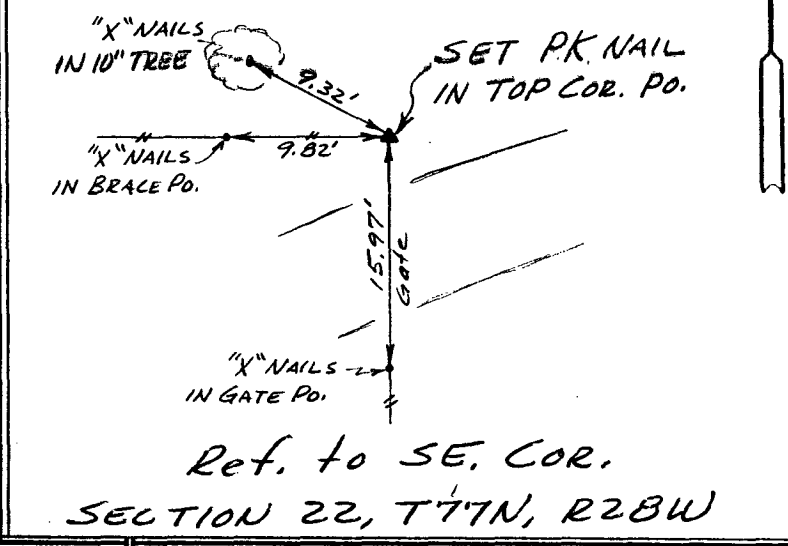
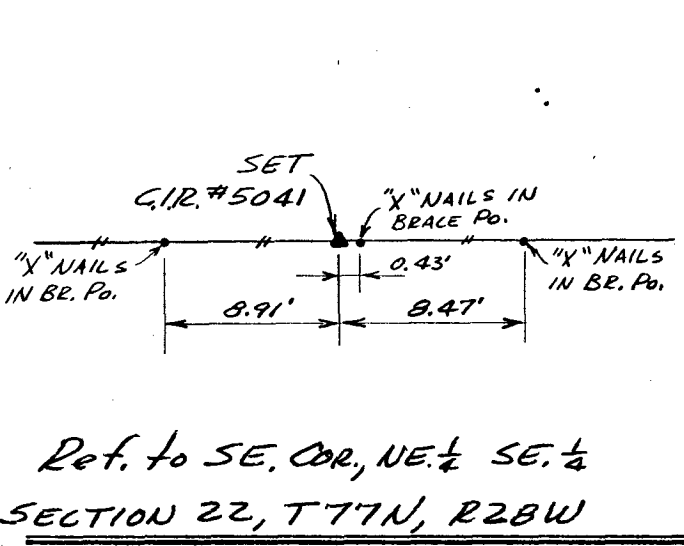
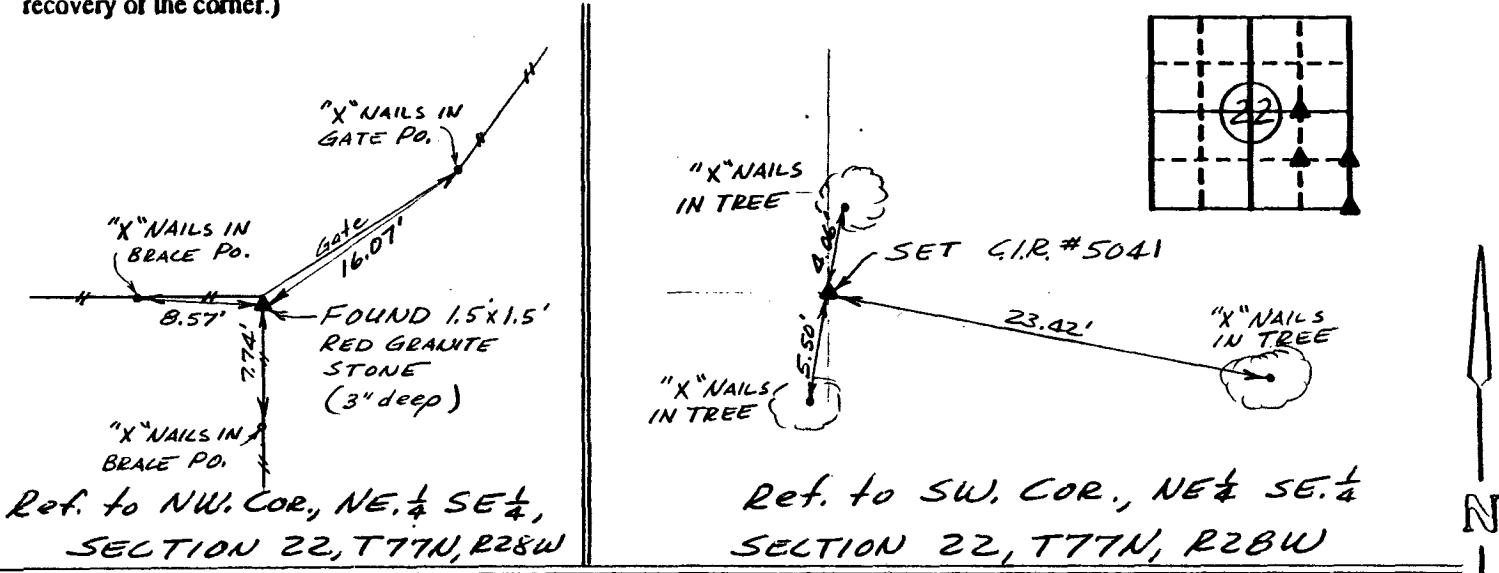
(book, page, document number, etc.)

(Show reason for preparing this certificate, the evidence and detailed procedures used in establishing the corner positions and monumentation found or placed.)

Monument Description and Remarks: _____

PLAN - VIEW

(Show a minimum of three reference ties to durable physical objects, relevant monuments and physical conditions that will enable recovery of the corner.)



I hereby certify that the survey work was completed and this certificate was prepared by me or under my direct personal supervision and that I am a duly registered land surveyor under the laws of the state of Iowa.

Signature: Charles T. Vance
Name typed or printed: Charles T. Vance, PE & LS
Date: 1 May 1992 Reg. No. 5041

Comers	Section	Twp	Range
NW. COR. NE 1/4 SE 1/4	22	77	28
SW. COR. NE 1/4 SE 1/4	22	77	28
SE. COR. NE 1/4 SE 1/4	22	77	28
SE. COR.	22	77	28

COMPARED _____ COMPUTER FILED NO. 2764
BOOK 1 PAGE 90
92 MAY 14 AM 10:05
MICHELLE UTSLER
RECORDER
MADISON COUNTY, IOWA
Fee \$5.00