

# UNITED STATES PUBLIC LAND CORNER CERTIFICATE OF

LAND SURVEY MONUMENTS SITUATED IN SECTION 32, TOWNSHIP 76  
NORTH, RANGE 27 WEST, OF THE 5TH P. M. IN MADISON COUNTY, IOWA.  
PREVIOUSLY RECORDED IN BOOK \_\_\_\_\_, PAGE \_\_\_\_\_  
(NOT PREVIOUSLY RECORDED)

COMPARED

FILED NO. 2509

BOOK 1 PAGE 80

92 APR 20 AM 10:45

MICHELLE UTSLER  
RECORDER  
MADISON COUNTY, IOWA

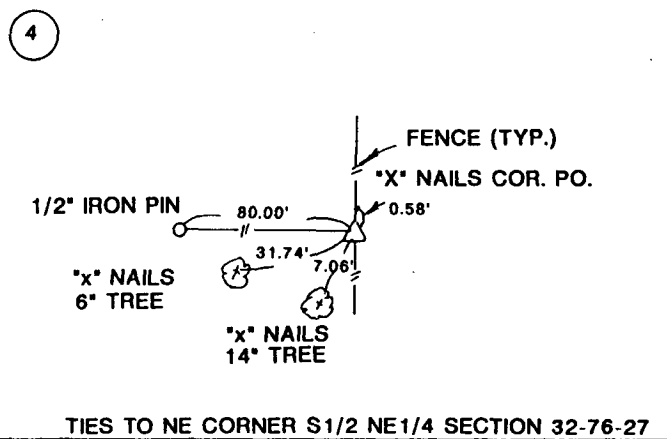
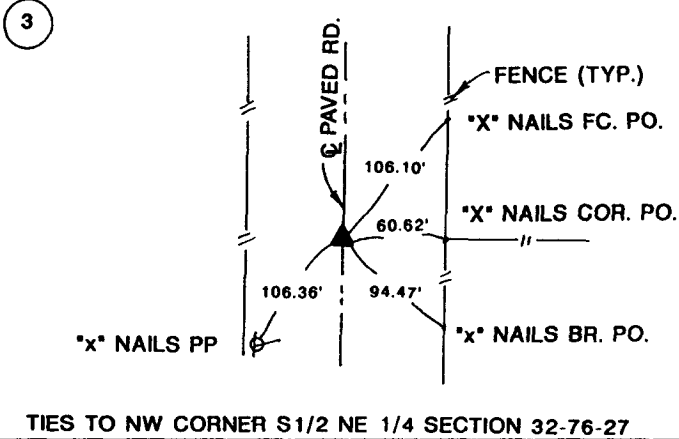
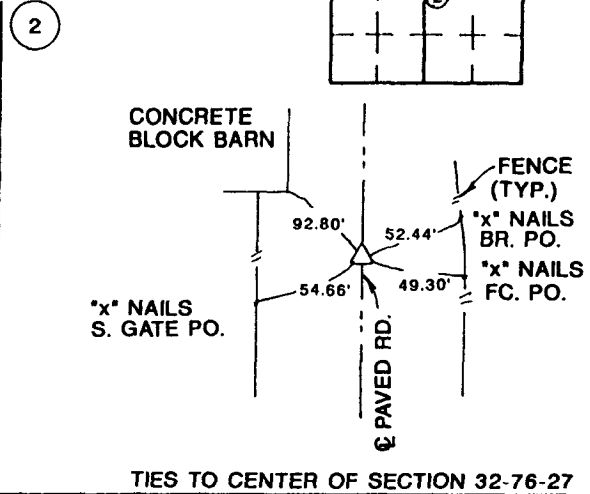
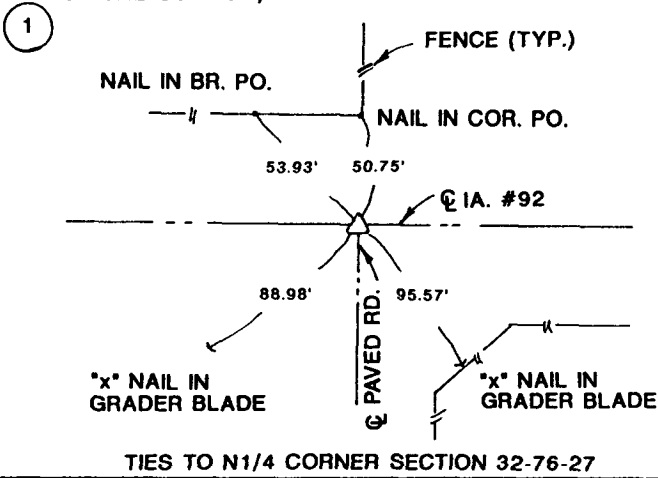
Fee \$5.00

**MONUMENT DESCRIPTION AND REMARKS:**

- ① N1/4 CORNER SECTION 32-76-27, FOUND FROST NAIL THAT CHECKED WITH OLD TIES.
- ② CENTER OF SECTION 32-76-27, FOUND NAIL IN CUT "x" IN PAVEMENT.
- ③ NW CORNER S1/2 NE1/4 SECTION 32-76-27, SET 1/2" I.P. IN HOLE DRILLED IN CONCRETE.
- ④ NE CORNER S1/2 NE1/4 SECTION 32-76-27, FOUND 1/2" I.P. AND FENCE CORNER.

## PLAN VIEW

(SHOW A MINIMUM OF THREE REFERENCE TIES TO DURABLE PHYSICAL OBJECTS, RELEVANT MONUMENTS, AND PHYSICAL CONDITIONS THAT WILL ENABLE RECOVERY OF THE CORNER.)



I HEREBY CERTIFY THAT THE SURVEY WORK WAS COMPLETED AND THIS CERTIFICATE WAS PREPARED BY ME OR UNDER MY DIRECT PERSONAL SUPERVISION AND THAT I AM A DULY REGISTERED LAND SURVEYOR UNDER THE LAWS OF THE STATE OF IOWA.

*James E. Norman*  
JAMES E. NORMAN REG. NO. 11808 DATE: 4-16-92



**Howard R. Green Company**  
CONSULTING ENGINEERS

LIST CORNERS TO BE INDEXED

CORNERS	SECTION	TWP.	RANGE
N1/4	32	76	27
CENTER	32	76	27
NW S/12 NE1/4	32	76	27
NE S1/2 NE1/4	32	76	27

SURVEY FOR: HENRICHSEN  
DATE: 4-14-92