

UNITED STATES PUBLIC LAND SURVEY CORNER CERTIFICATE

OF

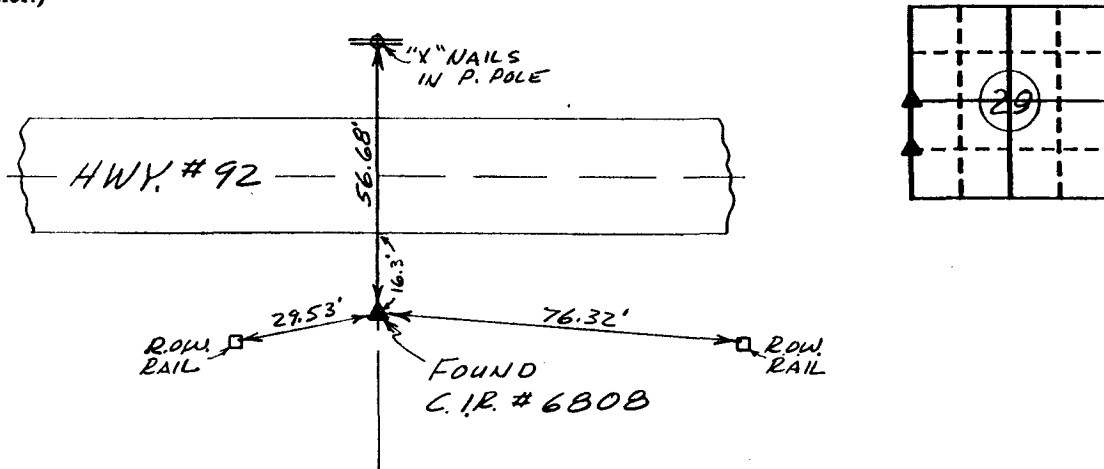
Land Survey Monuments situated in Section 29, Township 76 North, Range 26 West, of the Fifth Principal Meridian, Madison County, Iowa.
 Previously recorded in N/A in County Recorder's Office.
(book, page, document number, etc.)

(Show reason for preparing this certificate, the evidence and detailed procedures used in establishing the corner positions and monumentation found or placed.)

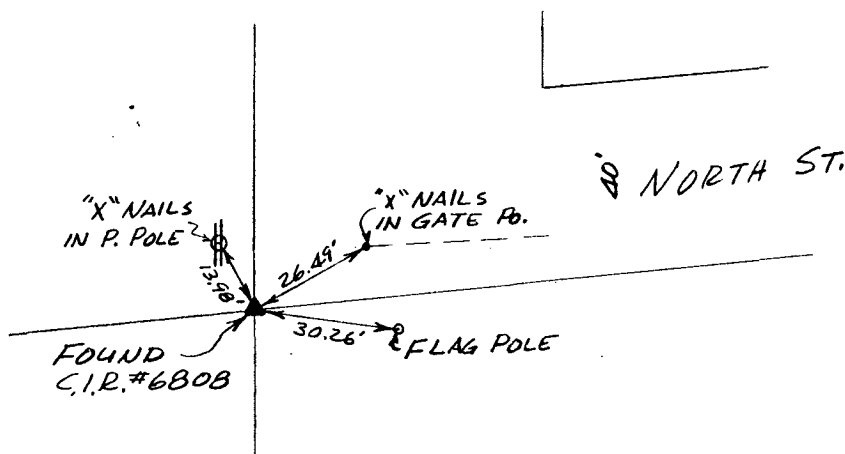
Monument Description and Remarks: _____

PLAN - VIEW

(Show a minimum of three reference ties to durable physical objects, relevant monuments and physical conditions that will enable recovery of the corner.)



Ref. to W. 1/4 COR., SECTION 29, T76N, R26W



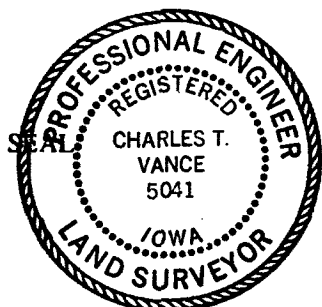
Ref. to SW. COR., NW. 1/4 SW. 1/4, SECTION 29, T76N, R26W

I hereby certify that the survey work was completed and this certificate was prepared by me or under my direct personal supervision and that I am a duly registered land surveyor under the laws of the state of Iowa.

Signature: Charles T. Vance
 Name typed or printed: Charles T. Vance, PE & LS
 Date: 10 March 1992 Reg. No. 5041

Corners	List Corners to be Indexed	Section	Twp	Range
W. 1/4 COR.	29 - 76 - 26			
SW. COR.	29 - 76 - 26			
NW. 1/4 SW. 1/4	29 - 76 - 26			

2356



COMPUTER
 FILED NO. _____
 CORNER CERT
 BOOK 1 PAGE 77
 92 MAR 31 PM 4:12
 IND.
 REC.
 PAGE
 MICHELLE UTSLER
 RECORDER
 MADISON COUNTY, IOWA
 Fee \$5.00

COMPARED