

# UNITED STATES PUBLIC LAND SURVEY CORNER CERTIFICATE

OF

Land Survey Monuments situated in Section 15, Township 75N, Range 27W, of the Fifth Principal Meridian, Madison County, Iowa. Previously recorded in NA in County Recorder's Office.

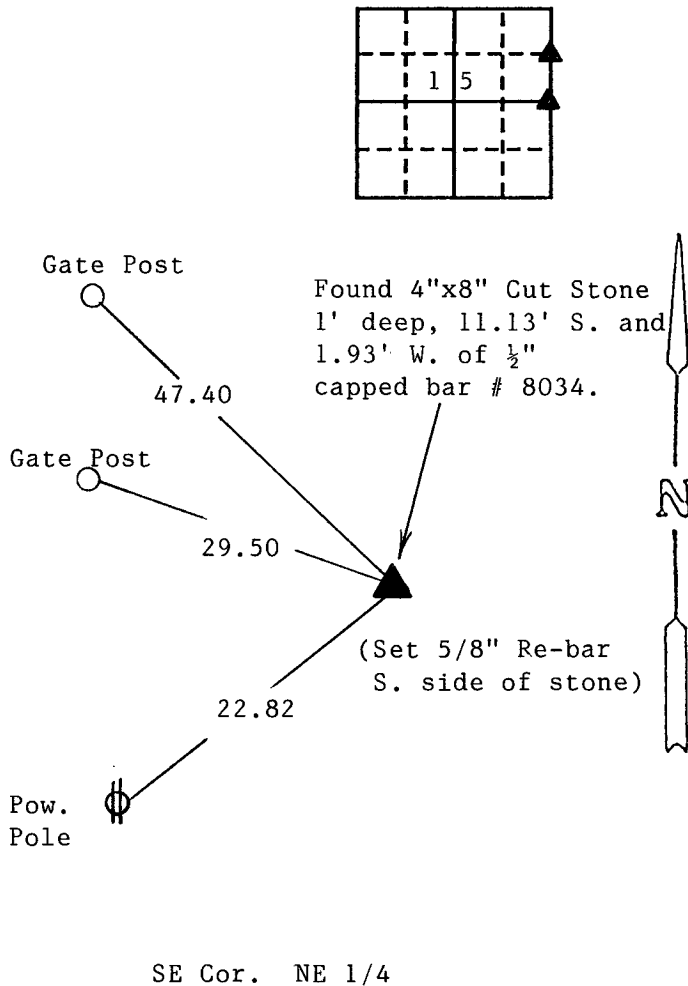
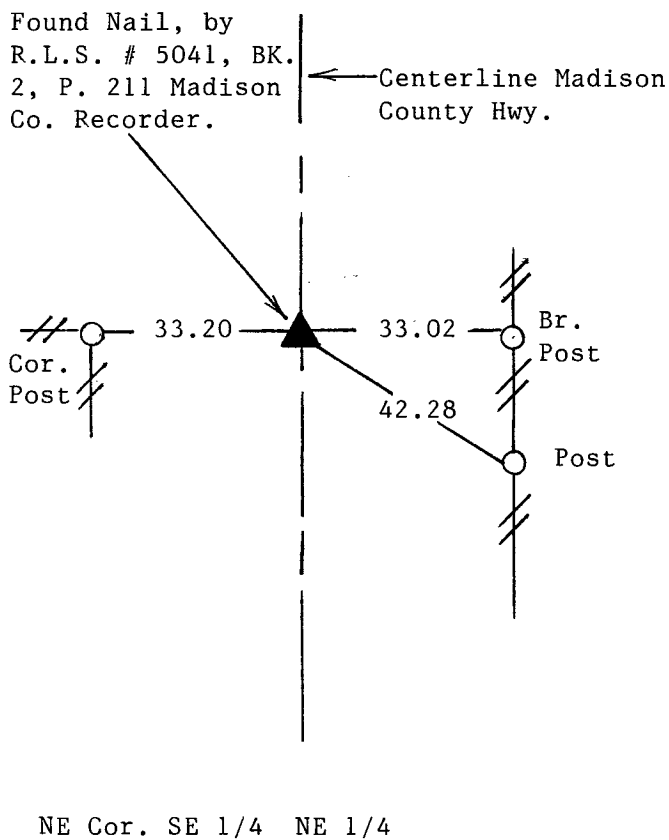
(book, page, document number, etc.)

(Show reason for preparing this certificate, the evidence and detailed procedures used in establishing the corner positions and monumentation found or placed.)

Monument Description and Remarks: NE Cor. SE 1/4 NE 1/4: Found nail set by R.L.S. # 5041 in line with fence to west and in center of road. SE Cor. NE 1/4: Found stone referred to in County Surveyor notes in County Engineer's office and witnessed by Fred Vierling. Capped bar # 8034 location north of stone not agreed with by R.L.S. #7995.

## PLAN - VIEW

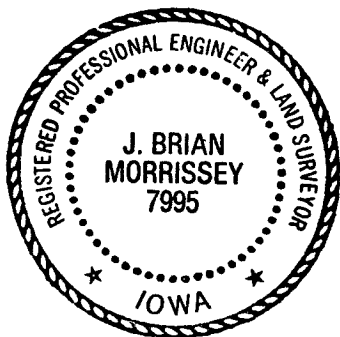
(Show a minimum of three reference ties to durable physical objects, relevant monuments and physical conditions that will enable recovery of the corner.)



Note: All ties "X" are nails

I hereby certify that the survey work was completed and this certificate was prepared by me or under my direct personal supervision and that I am a duly registered land surveyor under the laws of the state of Iowa.

Signature: J. Brian Morrissey  
Name typed or printed: J. Brian Morrissey  
Date: 2/20/92 Reg. No. 7995



SEAL

| Corners           | List Corners to be Indexed |     |       |
|-------------------|----------------------------|-----|-------|
|                   | Section                    | Twp | Range |
| NE, SE 1/4 NE 1/4 | 15                         | 75N | 27W   |
| SE, NE 1/4        | 15                         | 75N | 27W   |

OMP.  
FILED NO. **1956**  
Fee \$5.00 BOOK 1 PAGE 70  
92 FEB 20 PM 1:44  
MICHELLE UTSLER  
RECORDER  
MADISON COUNTY, IOWA  
COMPARED