

UNITED STATES PUBLIC LAND SURVEY CORNER CERTIFICATE OF

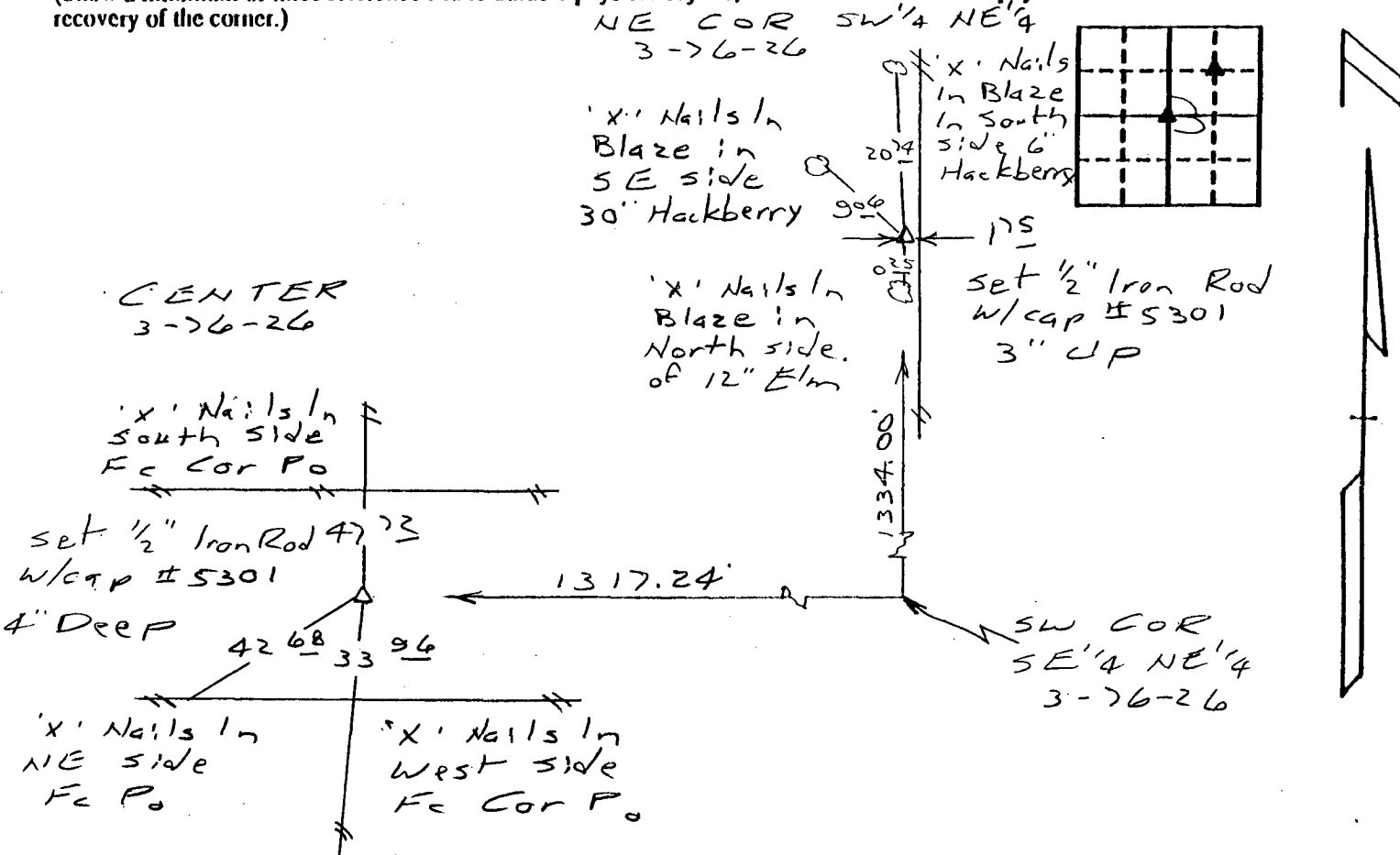
Land Survey Monuments situated in Section 3, Township 76, Range 26 W, of the Fifth Principal Meridian, MADISON County, Iowa. Previously recorded in N/A in County Recorder's Office.

(Show reason for preparing this certificate, the evidence and detailed procedures used in establishing the corner positions and monumentation found or placed.)

Monument Description and Remarks: NE COR SE 1/4 NE 1/4 - set in N-S fence line. CENTER - set in line with SE corner and SW corner of SE 1/4 NE 1/4 and in line with fence line North.

PLAN - VIEW

(Show a minimum of three reference ties to durable physical objects, relevant monuments and physical conditions that will enable recovery of the corner.)



I hereby certify that the survey work was completed and this certificate was prepared by me or under my direct personal supervision and that I am a duly registered land surveyor under the laws of the state of Iowa.

Signature: Franklin A. Norton Name typed or printed: FRANKLIN A. NORTON

Date: 2-08-92 Reg. No. 5301



SEAL

Table with columns: Corners, Section, Twp, Range. Rows include NE COR SE 1/4 NE 1/4 and Center.

FILED NO. 1916

Fee \$5.00 BOOK 1 PAGE 69

92 FEB 18 AM 9:37

COMPUTER MICHELLE UTSLER RECORDER MADISON COUNTY, IOWA

Handwritten checkmarks for 'FILED', 'REC', and 'FR'.

COMPARED