

# UNITED STATES PUBLIC LAND SURVEY CORNER CERTIFICATE

OF

Land Survey Monuments situated in Section 31, Township 75 North, Range 29 West, of the Fifth Principal Meridian, Madison County, Iowa. Previously recorded in N/A in County Recorder's Office.

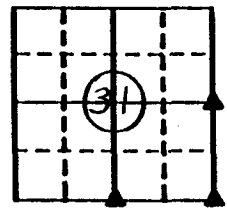
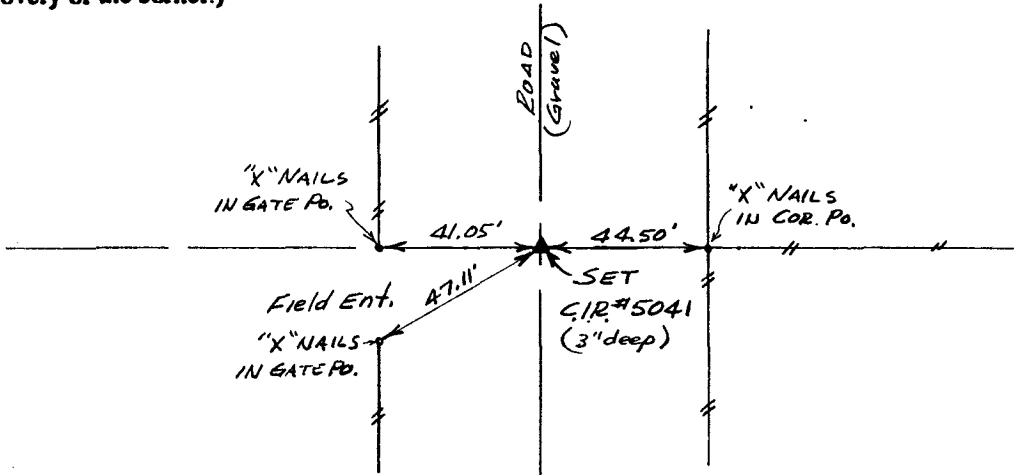
(book, page, document number, etc.)

(Show reason for preparing this certificate, the evidence and detailed procedures used in establishing the corner positions and monumentation found or placed.)

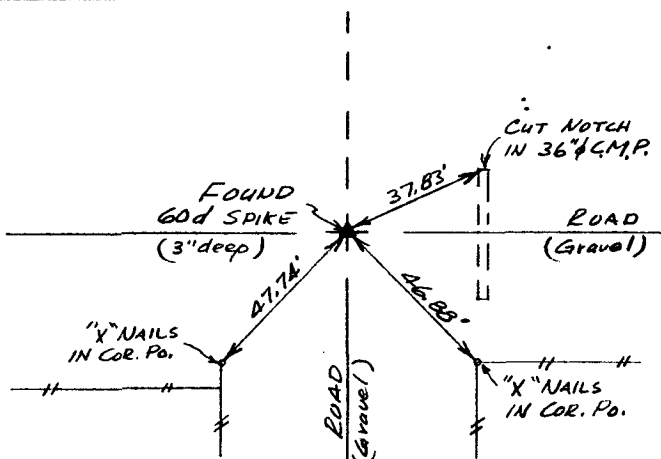
Monument Description and Remarks: \_\_\_\_\_

## PLAN - VIEW

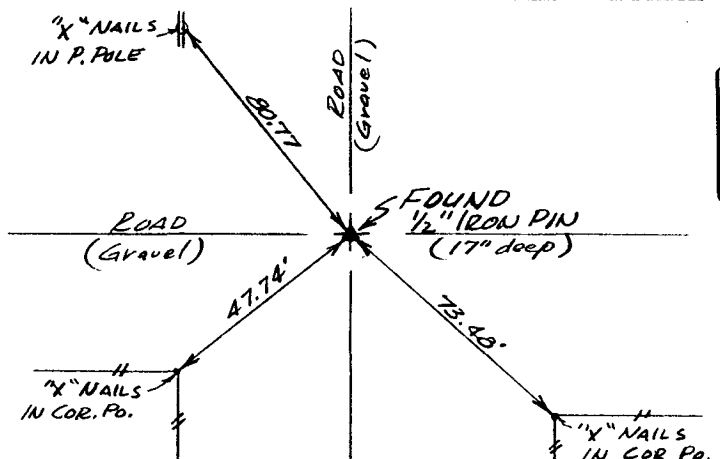
(Show a minimum of three reference ties to durable physical objects, relevant monuments and physical conditions that will enable recovery of the corner.)



Ref. to E. 1/4 COR., SECTION 31, T75N, R29W



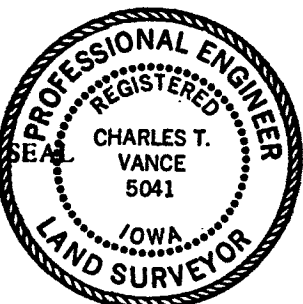
Ref. to S. 1/4 COR., SECTION 31, T75N, R29W



Ref. to SE. COR. SECTION 31, T75N, R29W

I hereby certify that the survey work was completed and this certificate was prepared by me or under my direct personal supervision and that I am a duly registered land surveyor under the laws of the state of Iowa.

Signature: Charles T. Vance  
Name typed or printed: Charles T. Vance, PE & LS  
Date: 16 April 1992 Reg. No. 5041



Corners	Section	Twp	Range
E. 1/4 COR.	31	75	29
S. 1/4 COR.	31	75	29
SE. COR.	31	75	29

FILED NO. **2540**  
 BOOK 1 PAGE 83  
 92 APR 22 PM 12:08  
 MICHELLE UTSLER  
 RECORDER  
 MADISON COUNTY, IOWA  
 Fee \$5.00

COMPUTED