

UNITED STATES PUBLIC LAND SURVEY CORNER CERTIFICATE

OF

Land Survey Monuments situated in Section 2, Township 77, Range 27, of the Fifth Principal Meridian, MADISON County, Iowa. Previously recorded in \_\_\_\_\_ in County Recorder's Office.

(book, page, document number, etc.)

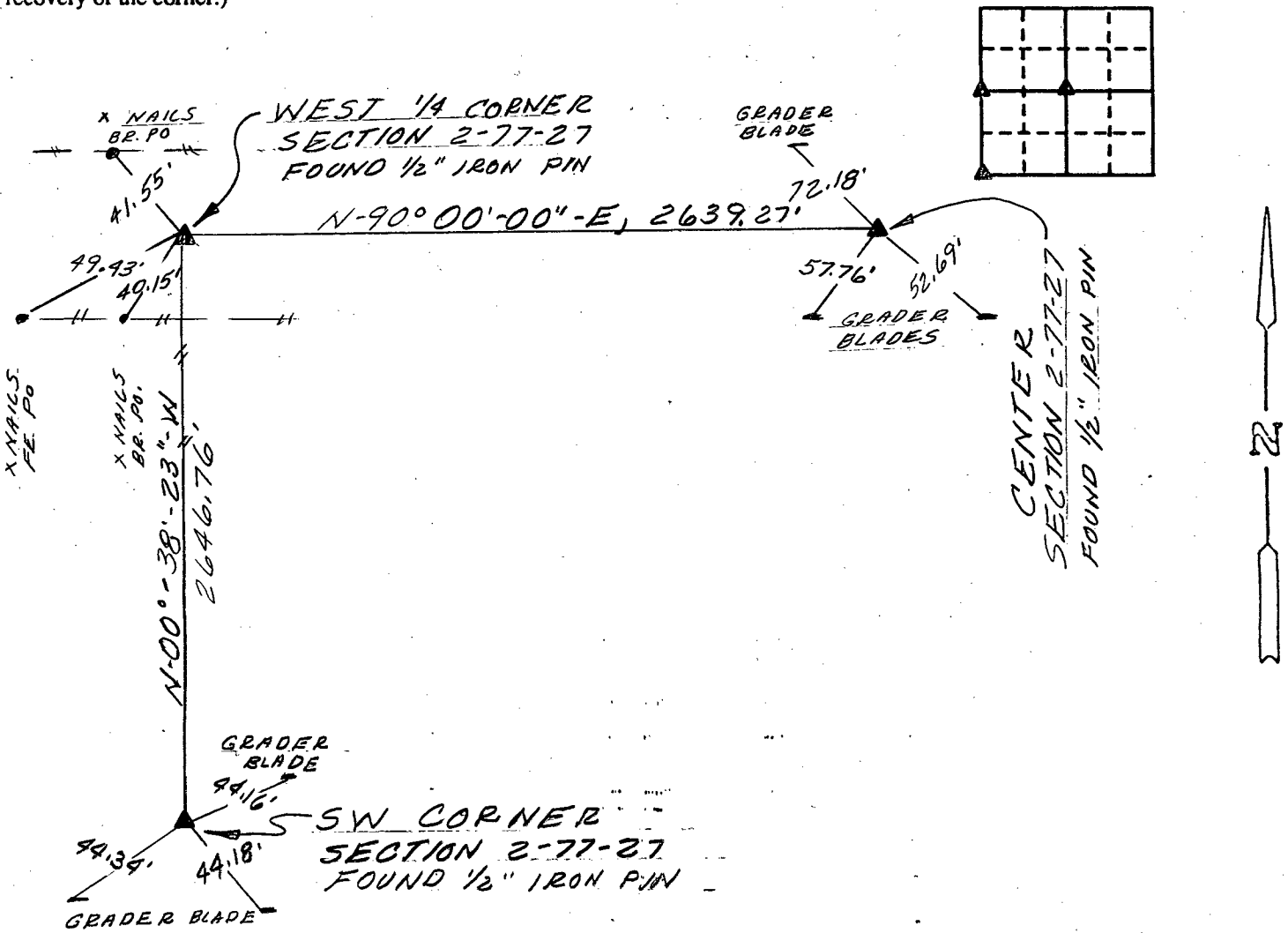
(Show reason for preparing this certificate, the evidence and detailed procedures used in establishing the corner positions and monumentation found or placed.)

Monument Description and Remarks:

CENTER - FOUND 1/2" IRON PIN  
WEST 1/4 - FOUND 1/2" IRON PIN  
SW COR - FOUND 1/2" IRON PIN

PLAN - VIEW

(Show a minimum of three reference ties to durable physical objects, relevant monuments and physical conditions that will enable recovery of the corner.)



I hereby certify that the survey work was completed and this certificate was prepared by me or under my direct personal supervision and that I am a duly registered land surveyor under the laws of the state of Iowa.

Signature: Henry S. Oakes  
 Name typed or printed: HENRY S. OAKES  
 Date: 1-7-92 Reg. No. 3321

Corners	List Corners to be Indexed Section	Twp	Range
CTR	2	77	27
W 1/4	2	77	27
SW	2	77	27

SEAL



FILED NO. **1615**  
 Corner Certificate  
 BOOK 1 PAGE 61  
 92 JAN - 8 PM 2: 19  
 MICHELLE UTSLER  
 RECORDER  
 MADISON COUNTY, IOWA

Fee \$5.00