

UNITED STATES PUBLIC LAND SURVEY CORNER CERTIFICATE

OF

Land Survey Monuments situated in Section 11, Township 75 North, Range 26 West, of the Fifth Principal Meridian, Madison County, Iowa. Previously recorded in N/A in County Recorder's Office.

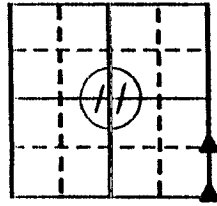
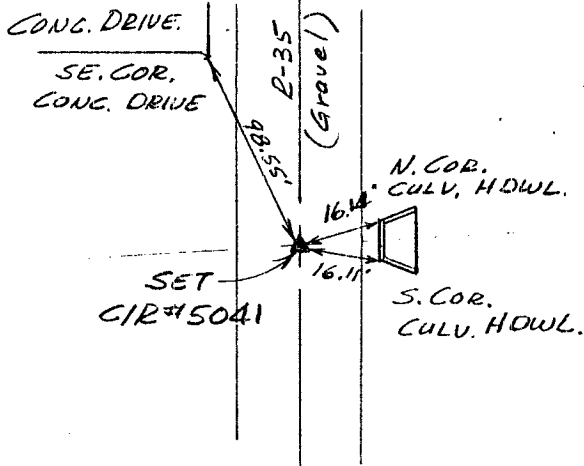
(book, page, document number, etc.)

(Show reason for preparing this certificate, the evidence and detailed procedures used in establishing the corner positions and monumentation found or placed.)

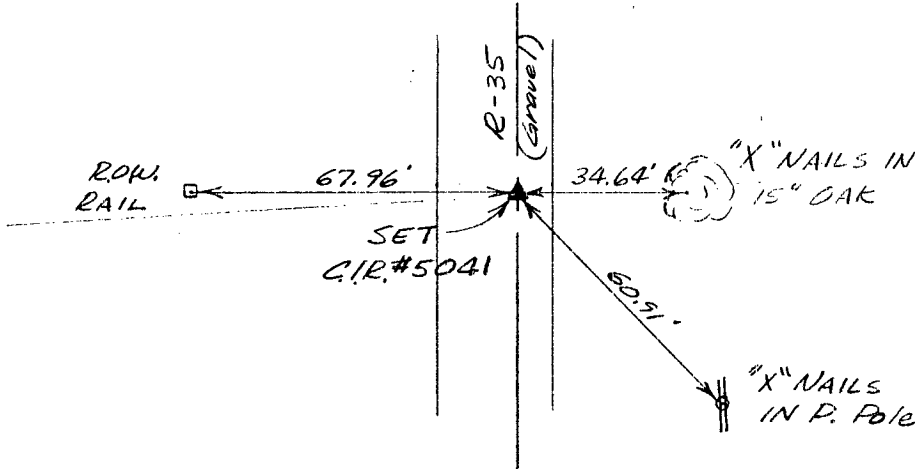
Monument Description and Remarks: _____

PLAN - VIEW

(Show a minimum of three reference ties to durable physical objects, relevant monuments and physical conditions that will enable recovery of the corner.)



Ref. to SE. COR., NE 1/4 SE 1/4, SECTION 11-75-26



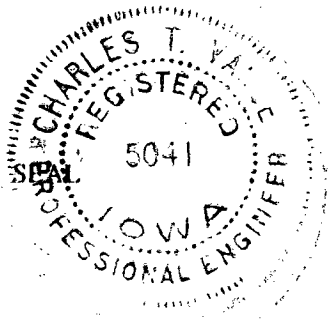
Ref. to SE. COR. SEC. 11-75-26

I hereby certify that the survey work was completed and this certificate was prepared by me or under my direct personal supervision and that I am a duly registered land surveyor under the laws of the state of Iowa.

Signature: Charles T. Vance
Name typed or printed: Charles T. Vance, PE & LS

Date: 19 Aug. 1991 Reg. No. 5041

Corners	List Corners to be Indexed	Section	Twp	Range
SE. COR.		11	75	26
NE 1/4 SE 1/4		11	75	26
SE. COR		11	75	26



FILED NO. **1096**
Corner Certificate
BOOK 1 PAGE 56

COMPARED

91 OCT 28 PM 2:55

MICHELLE UTSLER
RECORDER
MADISON COUNTY, IOWA

Fee \$5.00