

# UNITED STATES PUBLIC LAND SURVEY CORNER CERTIFICATE

OF

Land Survey Monuments situated in Section 25, Township 76 North, Range 27 West, of the Fifth Principal Meridian, Madison County, Iowa. Previously recorded in N/A in County Recorder's Office.

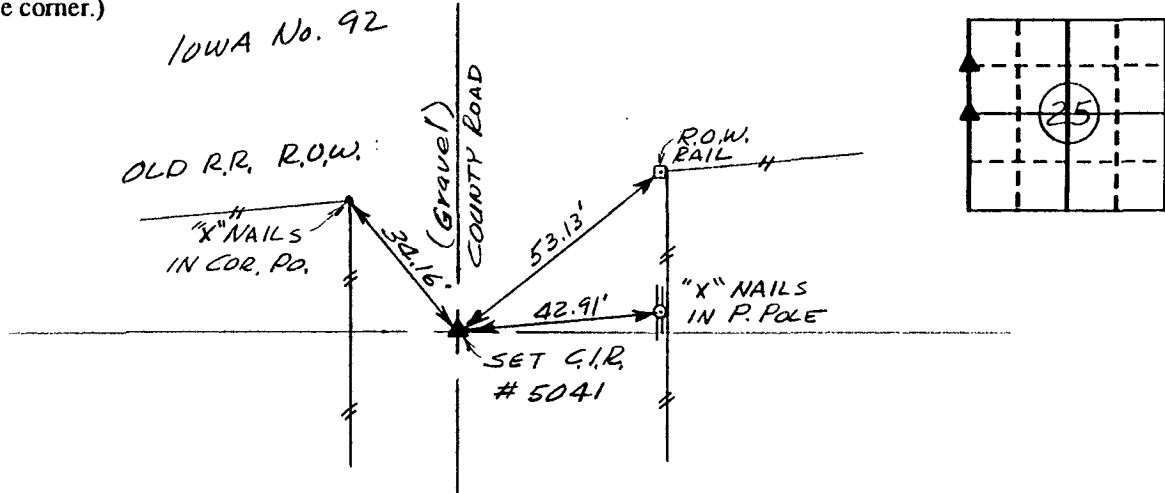
(book, page, document number, etc.)

(Show reason for preparing this certificate, the evidence and detailed procedures used in establishing the corner positions and monumentation found or placed.)

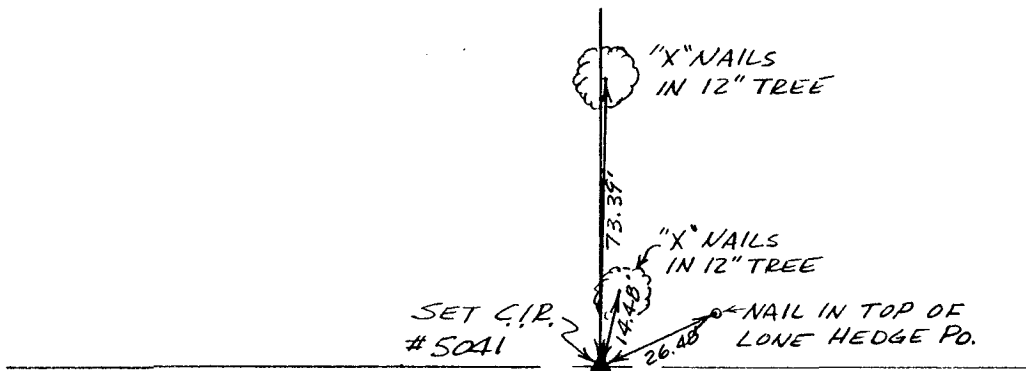
Monument Description and Remarks: \_\_\_\_\_

## PLAN - VIEW

(Show a minimum of three reference ties to durable physical objects, relevant monuments and physical conditions that will enable recovery of the corner.)



Ref. to NW. COR., SW. 1/4 - NW. 1/4, SECTION 25, T 76N, R 27W



Ref. to W. 1/4 COR., SECTION 25, T 76N, R 27W

I hereby certify that the survey work was completed and this certificate was prepared by me or under my direct personal supervision and that I am a duly registered land surveyor under the laws of the state of Iowa.

Signature: Charles T. Vance  
Name typed or printed: Charles T. Vance, PE & LS  
Date: 3 Sept. 1991 Reg. No. 5041

Corners	Section	Twp	Range
NW. Cor.	25	76	27
SW. 1/4 NW. 1/4	25	76	27
W. 1/4 Cor.	25	76	27

FILED NO. **941**

BOOK 1 PAGE 53

IND.   
REC.   
PAGE

91 OCT - 3 PM 1:43

MICHELLE UTSLER  
RECORDER  
MADISON COUNTY, IOWA

COMPARED

Fee \$5.00

