

# UNITED STATES PUBLIC LAND SURVEY CORNER CERTIFICATE

OF

Land Survey Monuments situated in Section 13, Township 77 North, Range 29 West, of the Fifth Principal Meridian, MADISON County, Iowa. Previously recorded in N/A in County Recorder's Office.

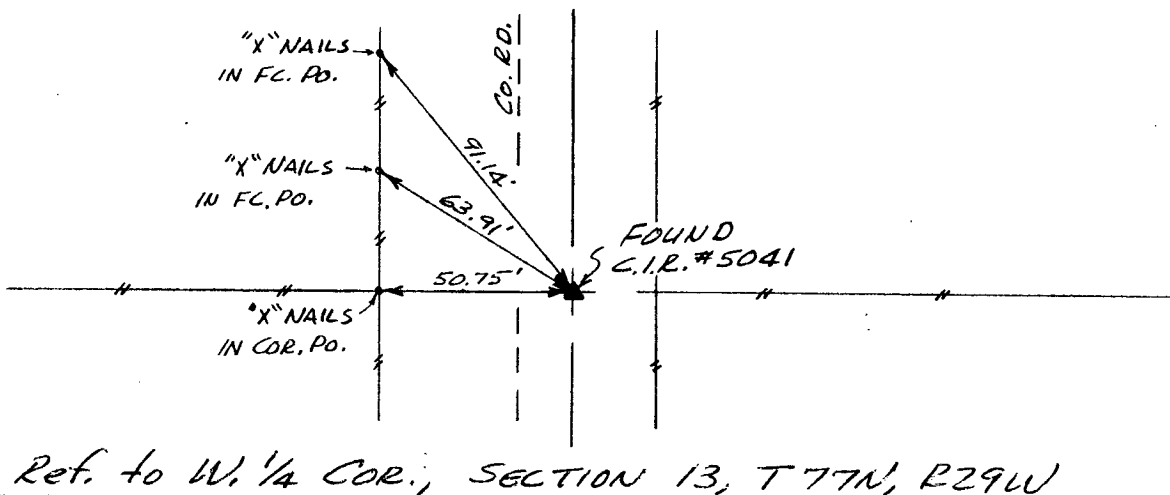
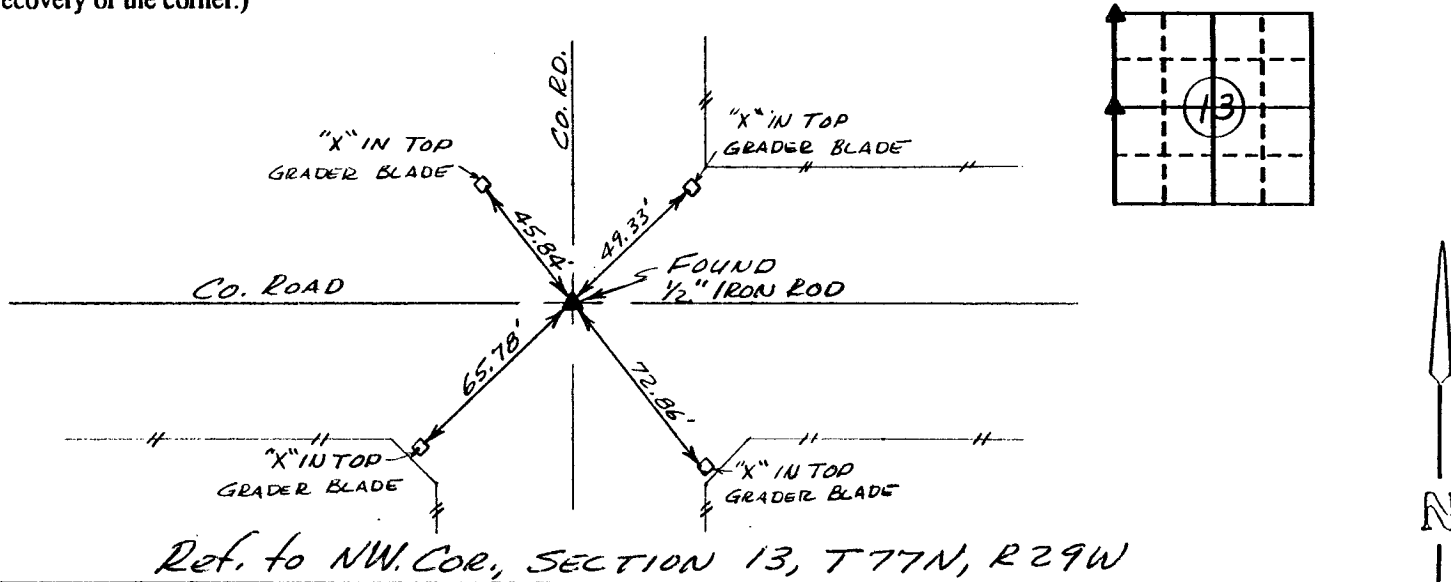
(book, page, document number, etc.)

(Show reason for preparing this certificate, the evidence and detailed procedures used in establishing the corner positions and monumentation found or placed.)

Monument Description and Remarks: \_\_\_\_\_

### PLAN - VIEW

(Show a minimum of three reference ties to durable physical objects, relevant monuments and physical conditions that will enable recovery of the corner.)



I hereby certify that the survey work was completed and this certificate was prepared by me or under my direct personal supervision and that I am a duly registered land surveyor under the laws of the state of Iowa.

Signature: Charles T. Vance  
Name typed or printed: Charles T. Vance, PE & LS  
Date: 14 Jan. 1992 Reg. No. 5041

SEAL

Corners	List Corners to be Indexed		
	Section	Twp	Range
NW COR.	13	77	29
W. 1/4 COR.	13	77	29

COMPARED

Fee \$5.00

IND.   
REC.   
PAGE

FILED NO. **1724**  
CORNER CERTIFICATE  
BOOK 1 PAGE 65

92 JAN 22 AM 9:01

MICHELLE UTSLER  
RECORDER  
MADISON COUNTY, IOWA