

# UNITED STATES PUBLIC LAND SURVEY CORNER CERTIFICATE

OF

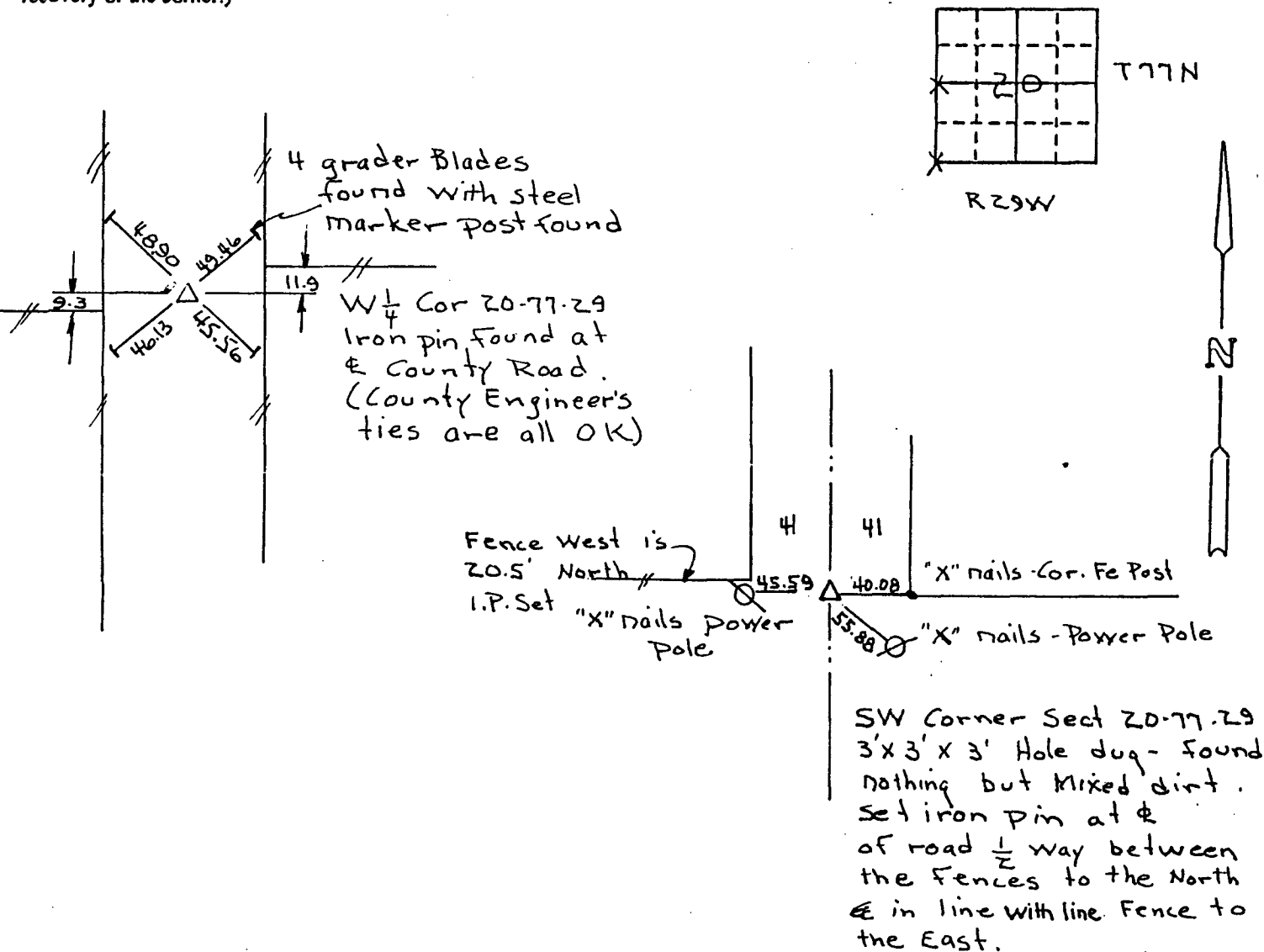
Land Survey Monuments situated in Section 20, Township 77 N, Range 29 W, of the Fifth Principal Meridian, Madison County, Iowa.  
Previously recorded in Book \_\_\_\_\_, Page \_\_\_\_\_.

(Show reason for preparing this certificate, the evidence and detailed procedures used in establishing the corner positions and monumentation found or placed.)

Monument Description and Remarks: S.W. Corner Section 20 was located by splitting the road fences to the north, and in line with line fence to the East. All distances level chained

## PLAN - VIEW

(Show a minimum of three reference ties to durable physical objects, relevant monuments and physical conditions that will enable recovery of the corner.)

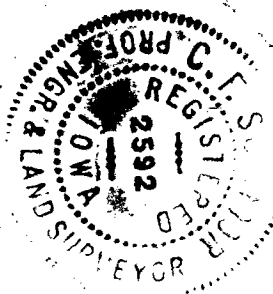


I hereby certify that the survey work was completed and this certificate was prepared by me or under my direct personal supervision and that I am a duly registered land surveyor under the laws of the state of Iowa.

[Signature] Apr. 1, 1991

REGISTERED LAND SURVEYOR NO. 2592

SEAL



### List Corners to be Indexed

Corners	Section	Twp	Range
W $\frac{1}{4}$	20	77	29
SW	"	"	"

COMPARED

FILED NO. 422

BOOK 1 PAGE 34

91 AUG -7 AM 9:58

MICHELLE UTSLER  
RECORDER  
MADISON COUNTY, IOWA

Fee \$5.00