

UNITED STATES PUBLIC LAND SURVEY CORNER CERTIFICATE

OF

Land Survey Monuments situated in Section 36, Township 75 NORTH, Range 26 WEST, of the Fifth Principal Meridian, MADISON County, Iowa. Previously recorded in N/A in County Recorder's Office.

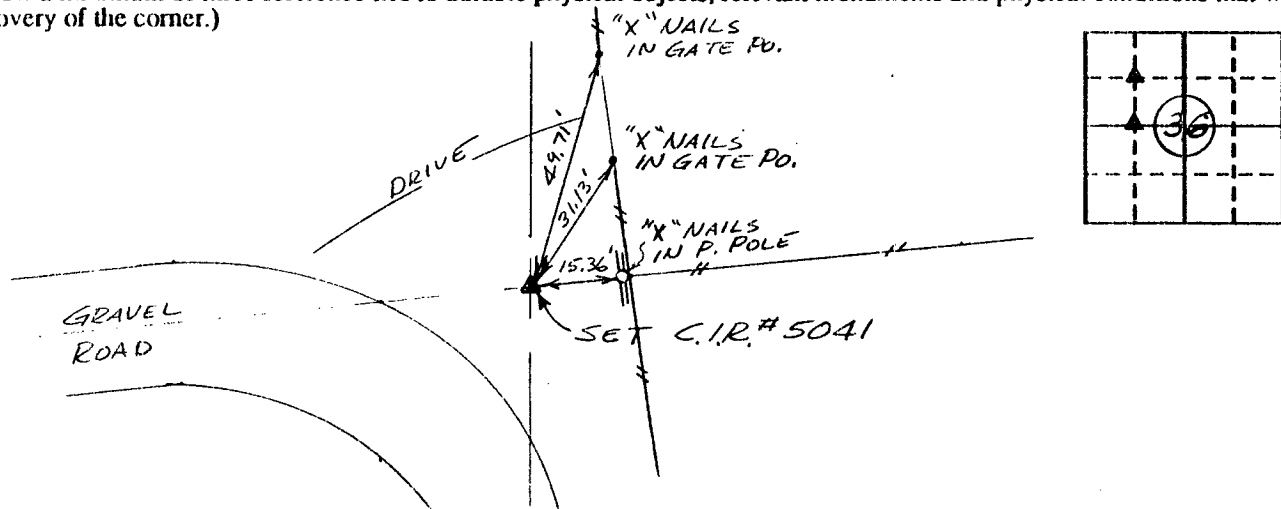
(book, page, document number, etc.)

(Show reason for preparing this certificate, the evidence and detailed procedures used in establishing the corner positions and monumentation found or placed.)

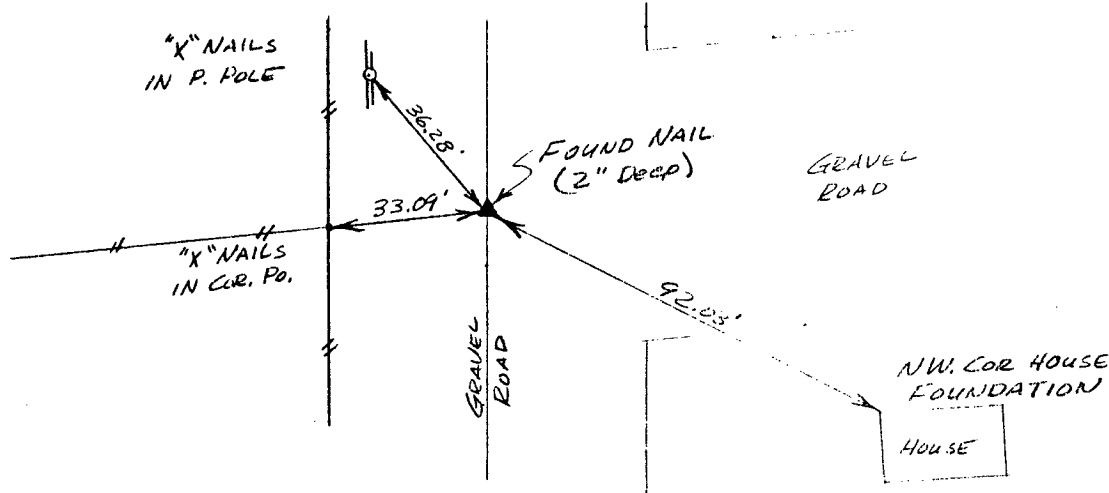
Monument Description and Remarks: _____

PLAN - VIEW

(Show a minimum of three reference ties to durable physical objects, relevant monuments and physical conditions that will enable recovery of the corner.)



Ref. to NW COR., SE. 1/4 NW. 1/4, SECTION 36, T 75N, R 26W



Ref. to SW. COR., SE. 1/4 NW. 1/4, SECTION 36, T 75N, R 26W

I hereby certify that the survey work was completed and this certificate was prepared by me or under my direct personal supervision and that I am a duly registered land surveyor under the laws of the state of Iowa.

Signature: Charles T. Vance
Name typed or printed: Charles T. Vance, PE & LS
Date: 31 July 1991 Reg. No. 5041



Corners	List Corners to be Indexed		
	Section	Twp	Range
NW COR. SE. 1/4 NW. 1/4	36	75	26
SW COR. SE. 1/4 NW. 1/4	36	75	26

FILED NO. 419

BOOK 1 PAGE 31

COMPARED 91 AUG -7 AM 9:54

MICHELLE UTSLER
RECORDER
MADISON COUNTY, IOWA

Fee \$5.00