



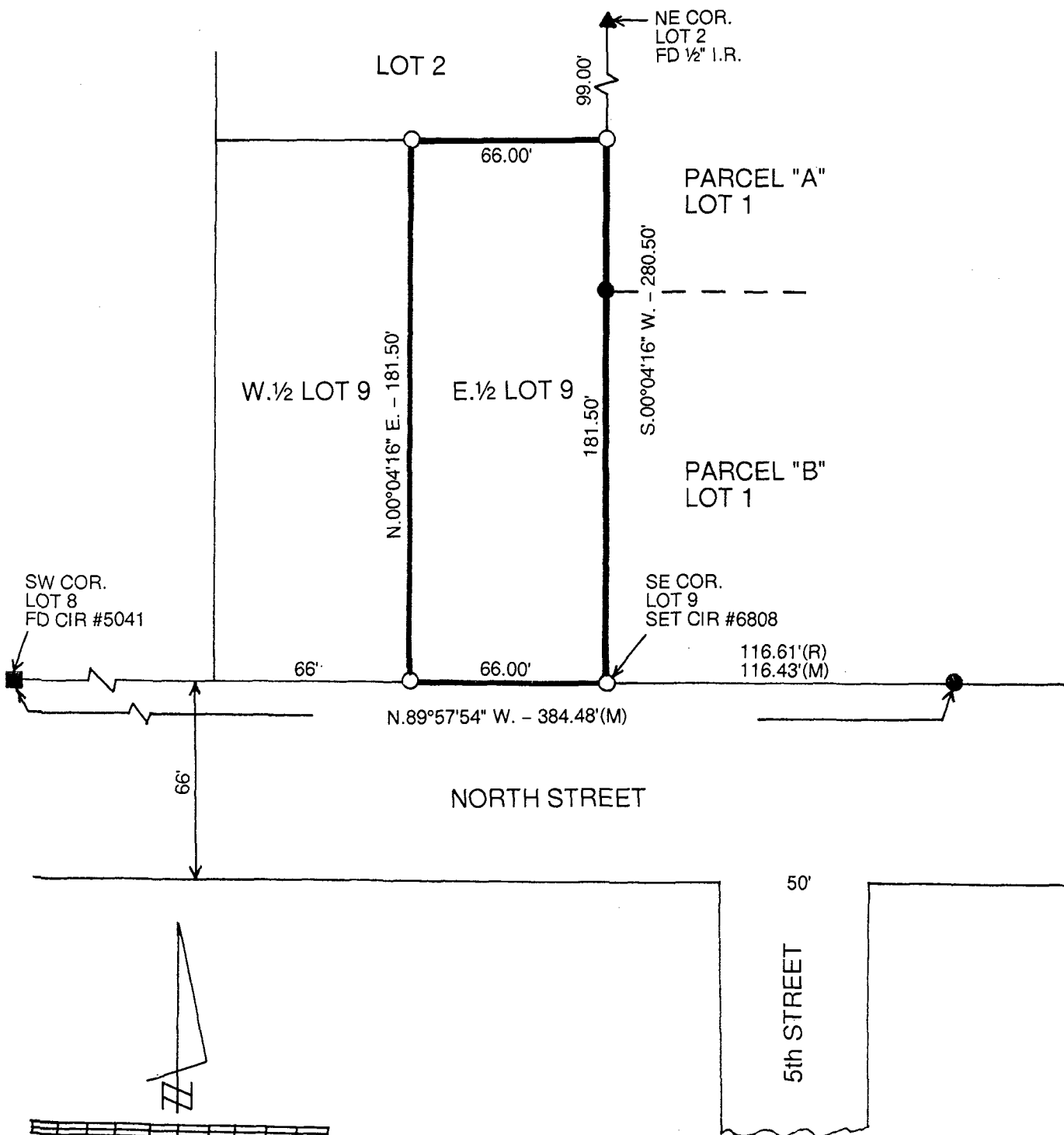
INDX ✓
ANNO
SCAN
CHEK

LISA SMITH, COUNTY RECORDER
MADISON COUNTY IOWA

VANCE & HOCHSTETLER, P.C. • CONSULTING ENGINEERS • WINTERSSET, IOWA • 50273

CHARLES T. VANCE • 110 WEST GREEN ST., WINTERSSET, IOWA • (515) 462-3995
JAMES M HOCHSTETLER • 110 WEST GREEN ST., WINTERSSET, IOWA • FAX: (515) 462 9845

PLAT OF SURVEY IN LOT 9 DEPOT ADDITION TO CITY OF
WINTERSSET, IOWA OWNED BY MARCUS W. & TANIA C. WOOD.



- DATE OF SURVEY: 2-8-2011
- CAPPED IRON ROD (CIR) #6808 SET
 - CIR #6808 FOUND
 - CIR #5041 FOUND
 - ▲ 1/2" IRON ROD FOUND
 - (M) MEASURED DISTANCE
 - (R) RECORDED DISTANCE

LEGAL DESCRIPTION:

The East Half of Lot 9 of Depot
Addition to the City of Winterset, Iowa.

I hereby certify that this land surveying document was prepared and the related survey work was performed by me or under my direct personal supervision and that I am a duly licensed Land Surveyor under the laws of the State of Iowa.

J.M. Hochstetler
J.M. HOCHSTETLER
License number 6808 Date 3/18/11
My license renewal date is December 31 2011
Pages or sheets covered by this seal: 1

LICENSED LAND SURVEYOR
J. M. HOCHSTETLER
#6808
IOWA