



Document 2011 871

Book 2011 Page 871 Type 06 043 Pages 1
Date 4/07/2011 Time 9:18 AM
Rec Amt \$9.00

INDX ✓
ANNO
SCAN
CHEK

LISA SMITH, COUNTY RECORDER
MADISON COUNTY IOWA

VANCE & HOCHSTETLER, P.C., CONSULTING ENGINEERS, WINTERSSET, IOWA (515) 462-3995
CHARLES T. VANCE, 110 West Green St., Winterset, Iowa, 50273
JAMES M HOCHSTETLER, 110 West Green St., Winterset, Iowa 50273

11-195

UNITED STATES PUBLIC LAND SURVEY CORNER CERTIFICATE

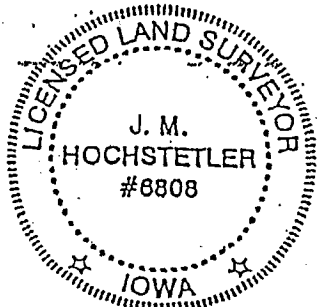
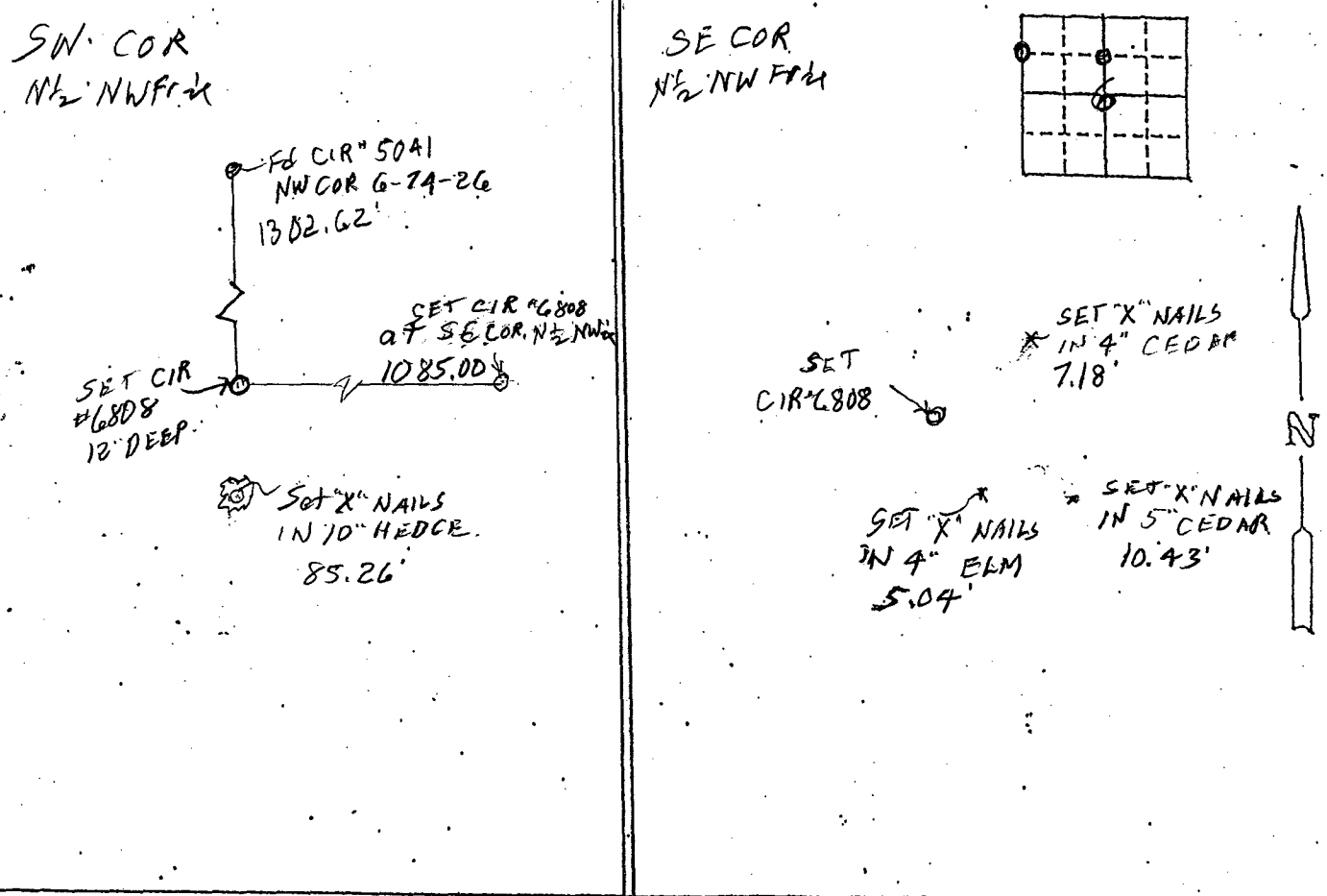
Land Survey Monuments situated in Section 6 OF 6 Township 74 N Range 26 W of the Fifth Principal Meridian, MADISON County, Iowa.
Previously recorded in _____ In County Recorder's Office.
(book, page, document number, etc.)

(Show reason for preparing this certificate, the evidence and detailed procedures used in establishing the the corner positions and monumentation found or placed.)

Monument Description and Remarks: SW COR N 1/2 NW 1/4 - Set yellow CIR #6808
at midpoint on line between found NW COR and Calculated
East Quarter.
SE COR N 1/2 NW 1/4 - Set yellow CIR #6808 to replace
CIR #5041 set and tied in 1992 which had been destroyed.

PLAN - VIEW

(Show a minimum of three reference ties to durable physical objects, relevant monuments and physical conditions that will enable recovery of the corner.)



I hereby certify that this land surveying document was prepared and the related survey work was performed by me or under my direct personal supervision and that I am a duly licensed Land Surveyor under the laws of the State of Iowa.
J.M. Hochstetler
J.M. HOCHSTETLER
License number 8808 Date 3/7/11
My license renewal date is December 31, 2011
Pages or sheets covered by this seal: 1

List Corners to be Indexed

Corners	Section	Twp.	Range
SW COR N 1/2 NW 1/4	6	74	26
SE COR N 1/2 NW 1/4	6	74	26