

# UNITED STATES PUBLIC LAND SURVEY CORNER CERTIFICATE

OF

Land Survey Monuments situated in Section 2, Township 77 NORTH, Range 29 West, of the Fifth Principal Meridian, Madison County, Iowa. Previously recorded in \_\_\_\_\_ in County Recorder's Office.

(book, page, document number, etc.)

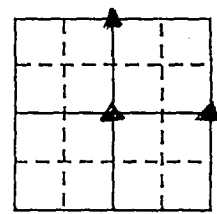
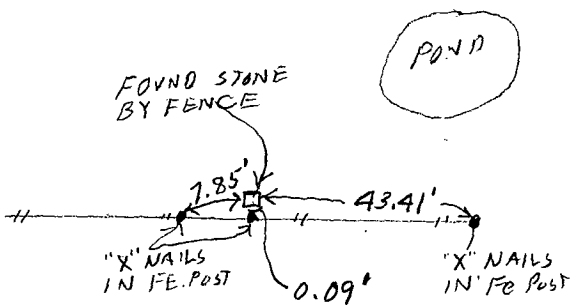
(Show reason for preparing this certificate, the evidence and detailed procedures used in establishing the corner positions and monumentation found or placed.)

Monument Description and Remarks: N 1/4 Cor - Found Stone in old fence line which was located & shown on a plat by Charles T. Vance on Nov. 25, 1991  
Center of Section - This point was reset by Cleo McCall on 6-30-82 from old county ties. We could not find pin but reset from McCall's ties and measurements.  
E 1/4 Cor - Found Lead Plug with Nail on E Co. Rd.

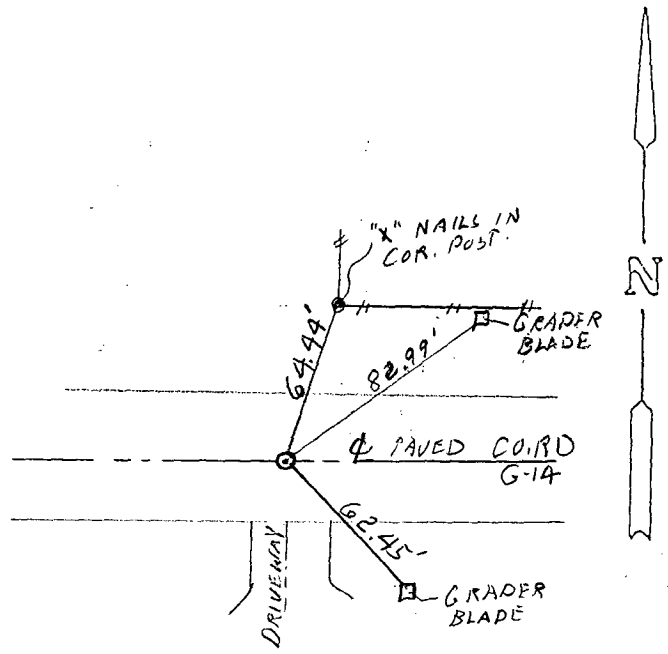
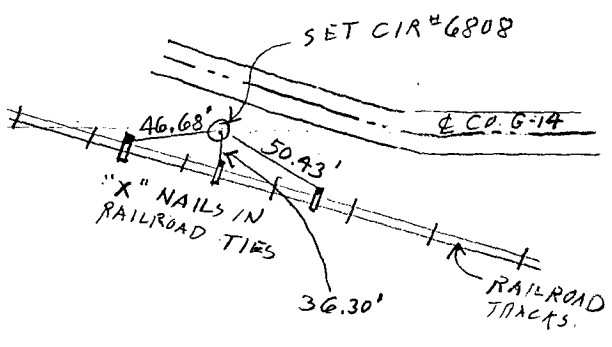
## PLAN - VIEW

(Show a minimum of three reference ties to durable physical objects, relevant monuments and physical conditions that will enable recovery of the corner.)

N 1/4 Cor.



CENTER OF SECTION



I hereby certify that the survey work was completed and this land surveying document was prepared by me or under my direct personal supervision and that I am a duly registered land surveyor under the laws of the state of Iowa

Signature: J.M. Hochstetler  
Name typed or printed: J.M. HOCHSTETLER

Date: 1/8/96 Reg. No. 6808

My registration renewal date is December 31, 1997

SEAL



Corners	List Corners to be Indexed		
	Section	Twp	Range
N 1/4 Cor.	2	77	29
CENTER	2	77	29
E 1/4 Cor.	2	77	29

COMPUTER RECORDED COMPARED

FILED NO. 2374

BOOK 1 PAGE 350

96 MAR -4 AM 11:21

REC \$ 5.00  
AUD \$ \_\_\_\_\_  
R.M.F. \$ 1.00

MICHELLE UTSLER  
RECORDER  
MADISON COUNTY, IOWA