

REC \$ 5.00

ADD ?

R.M.F. \$ 1.00

COMPUTER ✓
RECORDED ✓
COMPARED ✓

FILED NO. 2372

BOOK 1 PAGE 348

96 MAR -4 AM 11:18

MICHELLE UTSLER
RECORDER
MADISON COUNTY, IOWA

VANCE & HOCHSTETLER, P.C. CONSULTING ENGINEERS, WINTERSSET, IOWA (515)462-3995

CHARLES T. VANCE, 71 JEFFERSON ST., WINTERSSET, IOWA 50273

JAMES M. HOCHSTETLER, 71 JEFFERSON ST., WINTERSSET, IOWA 50273

SLSI 9-94

UNITED STATES PUBLIC LAND SURVEY CORNER CERTIFICATE

OF

Land Survey Monuments situated in Section 33, Township 74 NORTH, Range 26 WEST, of the Fifth Principal Meridian, MADISON County, Iowa. Previously recorded in _____ in County Recorder's Office.

(book, page, document number, etc.)

(Show reason for preparing this certificate, the evidence and detailed procedures used in establishing the corner positions and monumentation found or placed.)

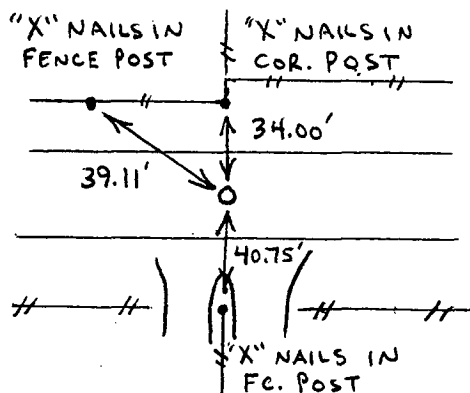
Monument Description and Remarks:

- SW cor. NE 1/4 NE 1/4 - Set C.I.R. #6808 @ road split in line with N-S Fences
- NW cor. NE 1/4 NE 1/4 - Set C.I.R. #6808 @ Fence corner
- NE corner - Fd. 5/8" Iron Pin 2" deep
- SE cor. NE 1/4 NE 1/4 - Fd. 5/8" Iron Pin 4" deep.

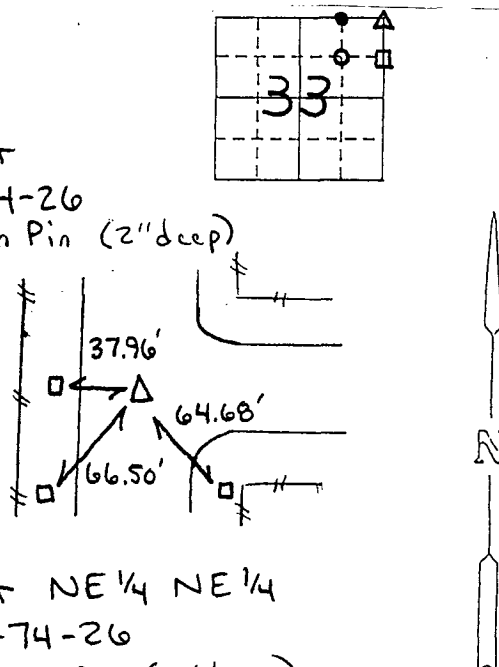
PLAN - VIEW

(Show a minimum of three reference ties to durable physical objects, relevant monuments and physical conditions that will enable recovery of the corner.)

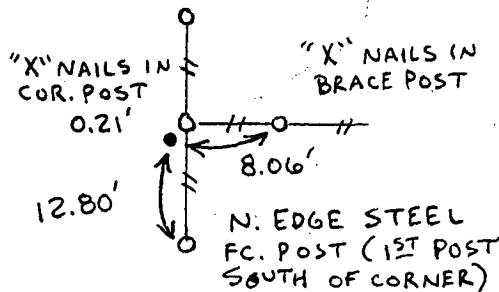
SW corner NE 1/4 NE 1/4
SEC. 33-74-26
Set C.I.R. #6808



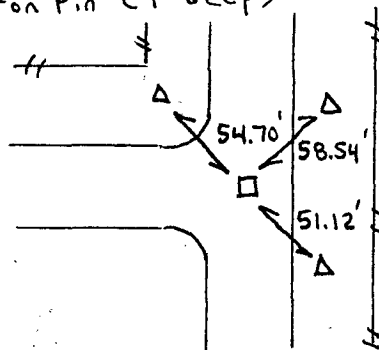
NE corner
SEC. 33-74-26
Fd. 5/8" Iron Pin (2" deep)
All ties are to Grader Blades



NW corner NE 1/4 NE 1/4
SEC. 33-74-26
Set C.I.R. #6808



SE corner NE 1/4 NE 1/4
SEC. 33-74-26
Fd. 5/8" Iron Pin (4" deep)
All ties are to Grader Blades



I hereby certify that the survey work was completed and this land surveying document was prepared by me or under my direct personal supervision and that I am a duly registered land surveyor under the laws of the state of Iowa

Signature: J. M. Hochstetler

Name typed or printed: J. M. Hochstetler

Date: 2/19/96 Reg. No. 6808

My registration renewal date is December 31, 1997

List Corners to be Indexed

Corners	Section	Twp	Range
○ SW cor. NE 1/4 NE 1/4	33	74 N	26 W
● NW cor. NE 1/4 NE 1/4	33	74 N	26 W
● SE cor. NE 1/4 NE 1/4	33	74 N	26 W
● NE cor.	33	74 N	26 W



SEAL