

UNITED STATES PUBLIC LAND SURVEY CORNER CERTIFICATE

OF

Land Survey Monuments situated in Section 14, Township 76 NORTH, Range 26 WEST, of the Fifth Principal Meridian, MADISON County, Iowa. Previously recorded in _____ in County Recorder's Office.

(book, page, document number, etc.)

(Show reason for preparing this certificate, the evidence and detailed procedures used in establishing the corner positions and monumentation found or placed.)

Monument Description and Remarks:

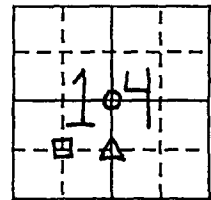
CENTER- Set C.I.R.#6808 @ 3-way fence corner.

NE cor. SE 1/4 SW 1/4 - Set C.I.R. #6808 @ intersection of the East line of the SW 1/4 and the E of the road (N. line of the SE 1/4 SW 1/4)

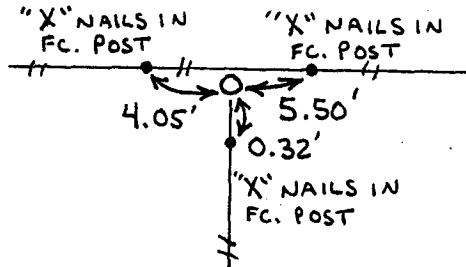
NW cor SE 1/4 SW 1/4 - Set C.I.R. #6808 @ road split in line with fence line to South.

PLAN - VIEW

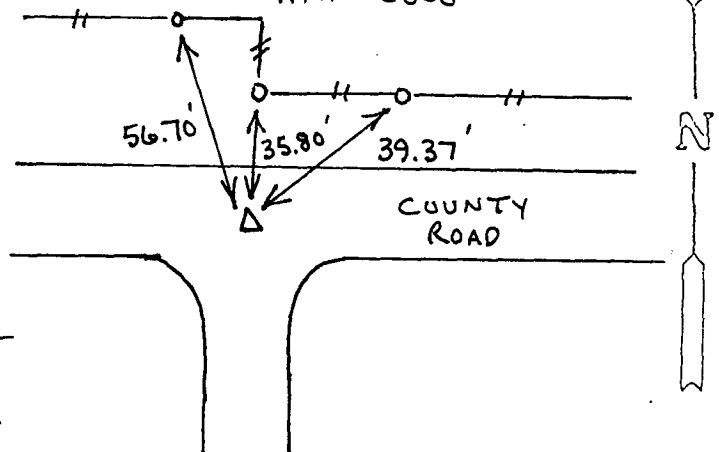
(Show a minimum of three reference ties to durable physical objects, relevant monuments and physical conditions that will enable recovery of the corner.)



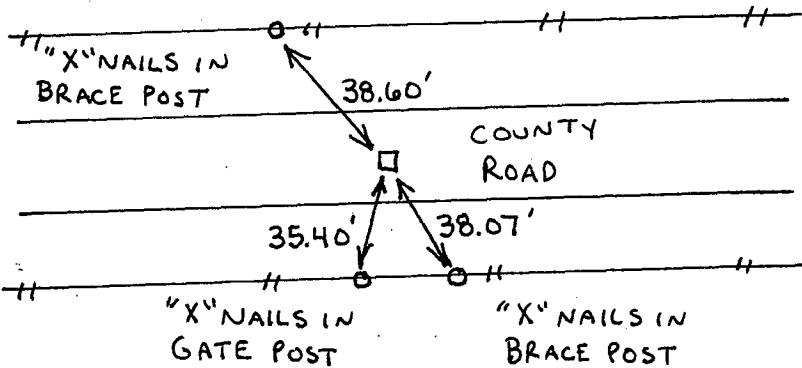
CENTER
SEC. 14-76-26
Set C.I.R. #6808



NE CORNER
SE 1/4 SW 1/4
SEC. 14-76-26
Set C.I.R. #6808



NW CORNER
SE 1/4 SW 1/4
SEC. 14-76-26
Set C.I.R. #6808



I hereby certify that the survey work was completed and this land surveying document was prepared by me or under my direct personal supervision and that I am a duly registered land surveyor under the laws of the state of Iowa

Signature: J.M. Hochstetler
Name typed or printed: J.M. HOCHSTETLER

Date: 11/26/96 Reg. No. 6808

My registration renewal date is December 31 1997

SEAL



Corners	List Corners to be Indexed Section	Twp	Range
CENTER	0 14	76N	26W
NE Cor. SE 1/4 SW 1/4	Δ 14	76N	26W
NW Cor. SE 1/4 SW 1/4	□ 14	76N	26W

FILED NO. **2196**

BOOK 1 PAGE 345

96 FEB 14 AM 9:45

MICHELLE UTSLER
RECORDER
MADISON COUNTY, IOWA

COMPUTER RECORDED