

UNITED STATES PUBLIC LAND SURVEY CORNER CERTIFICATE

OF

Land Survey Monuments situated in Section 12, Township 74 N, Range 26 W, of the Fifth Principal Meridian, Madison County, Iowa. Previously recorded in N. A. in County Recorder's Office.

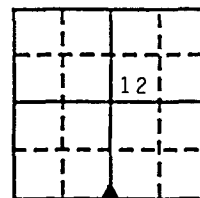
(book, page, document number, etc.)

(Show reason for preparing this certificate, the evidence and detailed procedures used in establishing the corner positions and monumentation found or placed.)

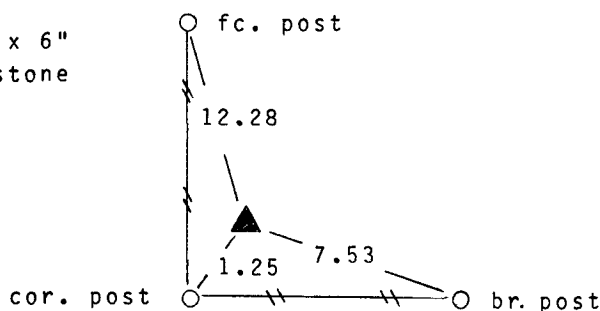
Monument Description and Remarks: Found 2" x 6" pointed stone at fence corner. Accepted position.

PLAN - VIEW

(Show a minimum of three reference ties to durable physical objects, relevant monuments and physical conditions that will enable recovery of the corner.)



Found 2" x 6" pointed stone



SE. Cor., SW. 1/4, Sec. 12

Note: all ties to "X" nails unless noted

I hereby certify that the survey work was completed and this certificate was prepared by me or under my direct personal supervision and that I am a duly registered land surveyor under the laws of the state of Iowa. My registration renewal date is 12/31/97.

Signature: J. Brian Morrissey
Name typed or printed: J. Brian Morrissey
Date: Dec. 28, 1995 Reg. No. 7995

Corners	Section	Twp	Range
SE. Cor., SW. 1/4	12	74N	26W

REC \$ 5.00
AND
R.M.F. \$ 1.00

FILED NO. 1788
BOOK 1 PAGE 328
95 DEC 29 AM 11:16

COMPILED
INDEXED
CORRECTED

MICHELLE UTSLER
RECORDER
MADISON COUNTY, IOWA

SEAL

