

UNITED STATES PUBLIC LAND SURVEY CORNER CERTIFICATE

OF

Land Survey Monuments situated in Section 12, Township 76 N, Range 26 W, of the Fifth Principal Meridian, Madison County, Iowa.
Previously recorded in N. A. in County Recorder's Office.

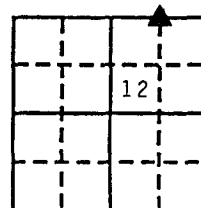
(book, page, document number, etc.)

(Show reason for preparing this certificate, the evidence and detailed procedures used in establishing the corner positions and monumentation found or placed.)

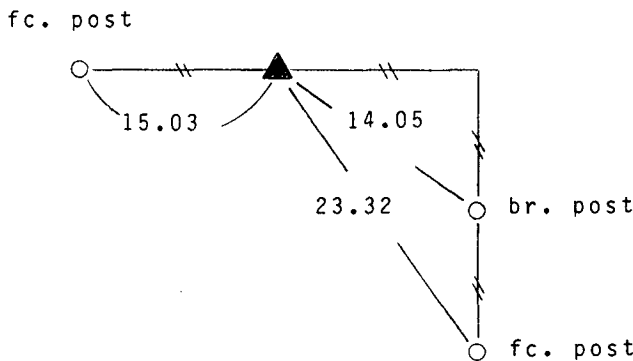
Monument Description and Remarks: Set 60d spike in tree root. Position based on single proportionate original chained measure and fence line.

PLAN - VIEW

(Show a minimum of three reference ties to durable physical objects, relevant monuments and physical conditions that will enable recovery of the corner.)



Set 60d spike in tree root



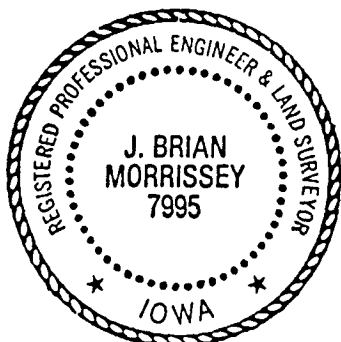
NW. Cor., NE. 1/4, NE. 1/4, Sec. 12



Note: all ties to "X" nails

I hereby certify that the survey work was completed and this certificate was prepared by me or under my direct personal supervision and that I am a duly registered land surveyor under the laws of the state of Iowa. My registration renewal date is 12/31/97.

Signature: J. Brian Morrissey
Name typed or printed: J. Brian Morrissey
Date: Dec. 27, 1995 Reg. No. 7995



SEAL

Corners	List Corners to be Indexed Section	Twp	Range
NW., NE. 1/4, NE. 1/4	12	76 N	26 W

REC \$ 500
R.M.F. \$ 700

FILED NO. 1785

BOOK 1 PAGE 326

95 DEC 29 AM 10:53

MICHELLE UTSLEK
RECORDER
MADISON COUNTY, IOWA