

UNITED STATES PUBLIC LAND SURVEY CORNER CERTIFICATE

OF

Land Survey Monuments situated in Section 32, Township 74 NORTH, Range 29 WEST, of the Fifth Principal Meridian, MADISON County, Iowa. Previously recorded in _____ in County Recorder's Office.

(book, page, document number, etc.)

(Show reason for preparing this certificate, the evidence and detailed procedures used in establishing the corner positions and monumentation found or placed.)

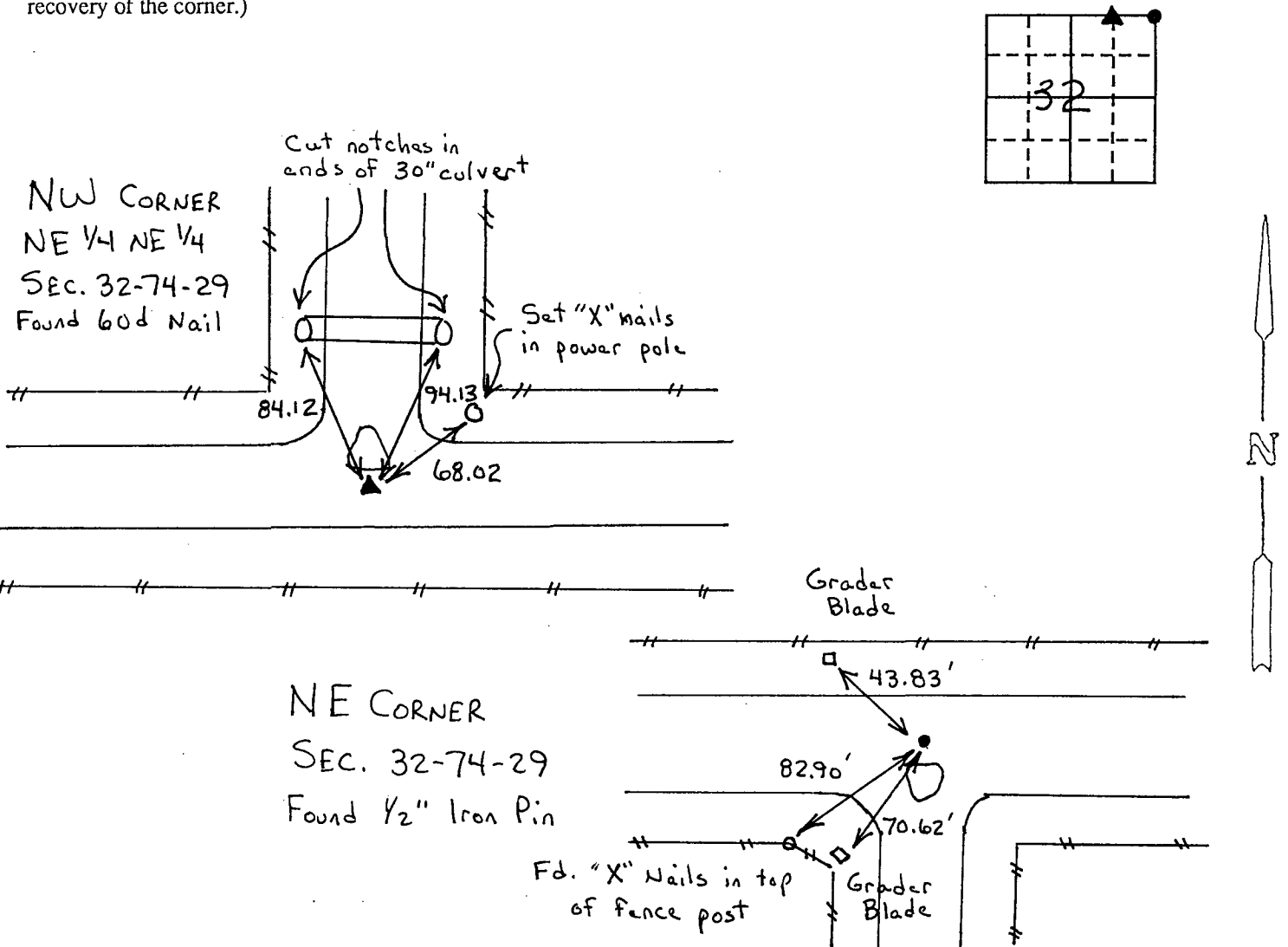
Monument Description and Remarks:

NE Corner - Found 1/2" Iron Pin and two county ties (grader blades)

NW Cor. NE 1/4 NE 1/4 - Found 60d Nail at approx. road centerline intersection

PLAN - VIEW

(Show a minimum of three reference ties to durable physical objects, relevant monuments and physical conditions that will enable recovery of the corner.)



I hereby certify that the survey work was completed and this land surveying document was prepared by me or under my direct personal supervision and that I am a duly registered land surveyor under the laws of the state of Iowa

Signature: J. M. Hochstetler
Name typed or printed:

Date: 12/7/95 Reg. No. 6808

My registration renewal date is December 31, 1995

SEAL



Corners	List Corners to be Indexed Section	Twp	Range
• NE Cor	32	74 N	29 W
▲ NW Cor NE 1/4 NE 1/4	32	74 N	29 W

REC \$ 5.00
ADD \$ _____
R.M.F. \$ 4.00

FILED NO. 1679
BOOK 1 PAGE 322
95 DEC 18 PM 2:43

SEARCHED
INDEXED
CORRECTED

MICHELLE UTSLER
RECORDER
MADISON COUNTY, IOWA