

UNITED STATES PUBLIC LAND SURVEY CORNER CERTIFICATE

OF

Land Survey Monuments situated in Section Sixteen (16), Township 77, Range 26 W, of the Fifth Principal Meridian, Madison County, Iowa. Previously recorded in N/A in County Recorder's Office.

(book, page, document number, etc.)

(Show reason for preparing this certificate, the evidence and detailed procedures used in establishing the corner positions and monumentation found or placed.)

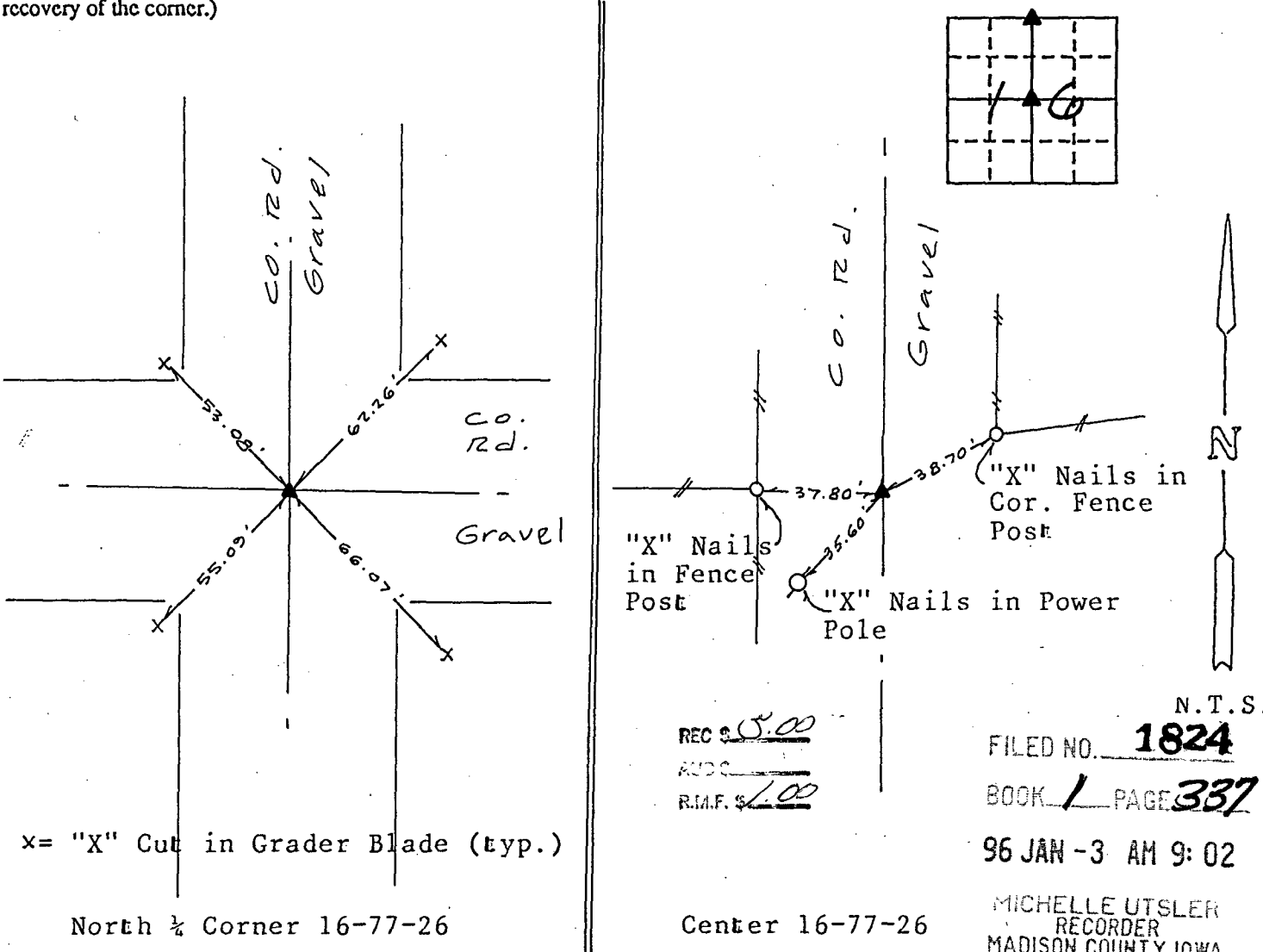
Monument Description and Remarks: N 1/2 Corner of Section 16-77-26 -- Found Nail Over Stone

Center Section 16-77-26 -- Found 1/2" Iron Rod

Used for conducting a boundary survey.

PLAN - VIEW

(Show a minimum of three reference ties to durable physical objects, relevant monuments and physical conditions that will enable recovery of the corner.)



I hereby certify that the survey work was completed and this certificate was prepared by me or under my direct personal supervision and that I am a duly registered land surveyor under the laws of the state of Iowa.

Signature: Gregory L. Ross
Name typed or printed: Gregory L. Ross
Date: 12-22-95 Reg. No. 13286

List Corners to be Indexed			
Corners	Section	Twp	Range
N. 1/2 Cor.	16	77	26
Ctr.	16	77	26



REC \$ 5.00
R.M.F. \$ 1.00

LandTech Services, Inc.
8560 Alice Avenue - Suite A
Des Moines, IA 50325
Phone (515) 270-9537

COMPILED
RECORDED
CERTIFIED

SEAL