

# UNITED STATES PUBLIC LAND SURVEY CORNER CERTIFICATE

95-935

OF

Land Survey Monuments situated in Section 11, Township 76 North, Range 27 West, of the Fifth Principal Meridian, Madison County, Iowa. Previously recorded in NA in County Recorder's Office.

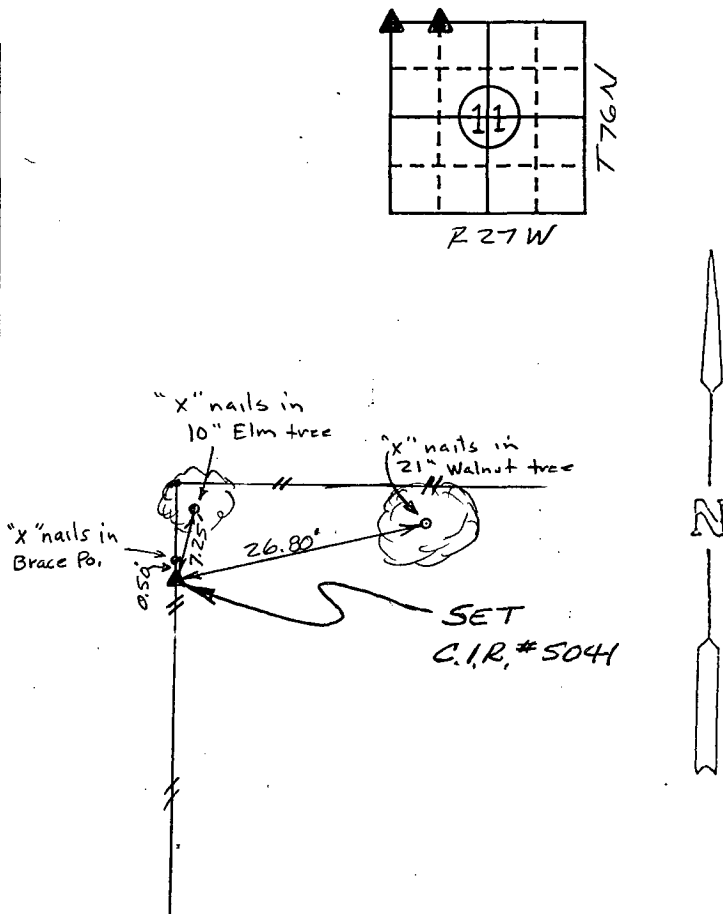
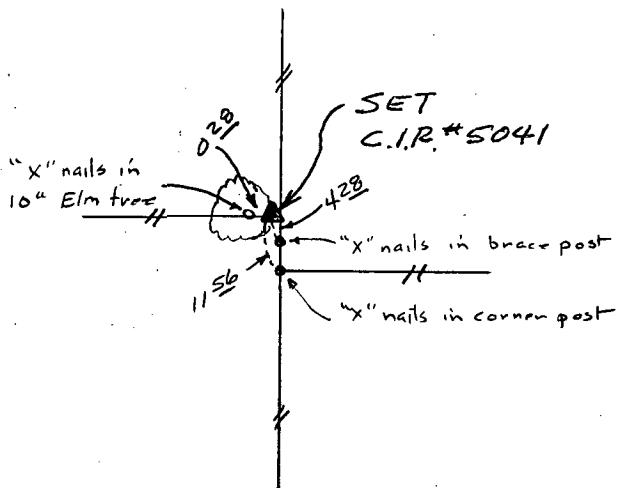
(book, page, document number, etc.)

(Show reason for preparing this certificate, the evidence and detailed procedures used in establishing the corner positions and monumentation found or placed.)

Monument Description and Remarks: set N.W. corner of section 11 from information on 1972 L.W. Croft survey and set the NW corner of the NE 1/4 of the NW 1/4 from combined information from 1972 L.W. Croft survey and 1972 D.M. Hiller Survey.

## PLAN - VIEW

(Show a minimum of three reference ties to durable physical objects, relevant monuments and physical conditions that will enable recovery of the corner.)



Ref. to Northwest Corner,  
SECTION 11, T76N, R27W.

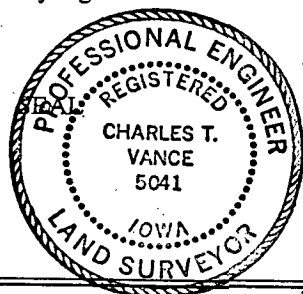
Ref. to NW. COR., NE 1/4 NW 1/4,  
SECTION 11, T76N, R27W.

I hereby certify that the survey work was completed and this land surveying document was prepared by me or under my direct personal supervision and that I am a duly registered land surveyor under the laws of the state of Iowa

Signature: Charles T. Vance  
Name typed or printed: Charles T. Vance

Date: 30 August 1995 Reg. No. 5041

My registration renewal date is December 31, 1995



COMPUTER   
RECORDED   
CORRECTED

Corners	Section	Twp	Range
NW cor.	11	T76N	R27W
NW cor NE 1/4 NW 1/4	11	T76N	R27W

REC \$ 5.00  
AUD \$ \_\_\_\_\_  
R.M.F. \$ 1.00

FILED NO. 904  
BOOK 1 PAGE 312  
95 OCT -3 AM 8:29

MICHELLE UTSLER  
RECORDER  
MADISON COUNTY, IOWA