

UNITED STATES PUBLIC LAND SURVEY CORNER CERTIFICATE

95-1355

OF

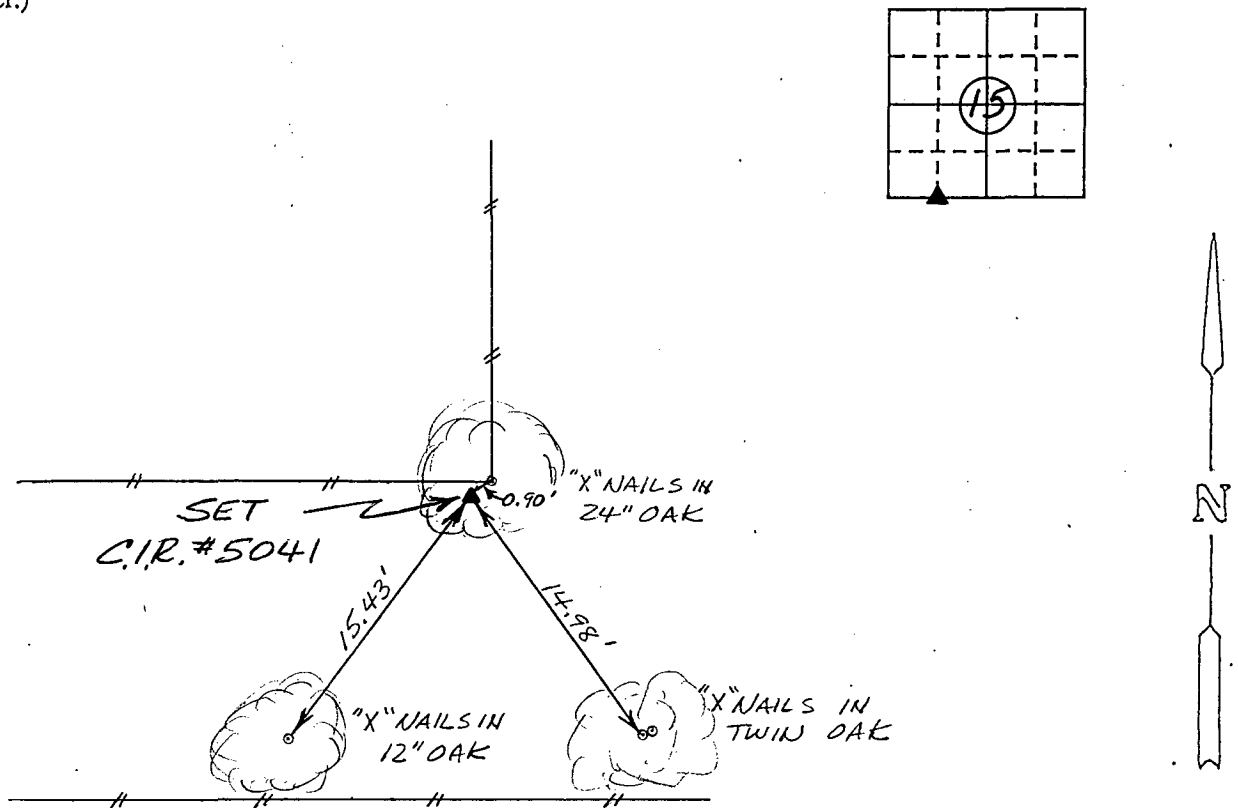
Land Survey Monuments situated in Section 15, Township 75 North, Range 28 West, of the Fifth Principal Meridian, Madison County, Iowa. Previously recorded in N/A in County Recorder's Office.

(Show reason for preparing this certificate, the evidence and detailed procedures used in establishing the corner positions and monumentation found or placed.)

Monument Description and Remarks: Set C.I.R.#5041 at corner based on physical evidence at the site.

PLAN - VIEW

(Show a minimum of three reference ties to durable physical objects, relevant monuments and physical conditions that will enable recovery of the corner.)



Ref. to SE. COR., SW 1/4 SW 1/4, SECTION 15, T 75N, R 28W.

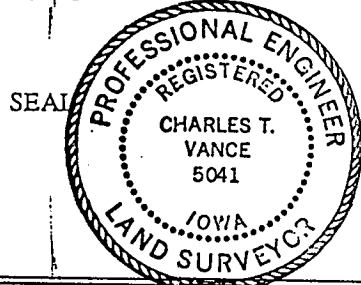
I hereby certify that the survey work was completed and this land surveying document was prepared by me or under my direct personal supervision and that I am a duly registered land surveyor under the laws of the state of Iowa

Signature: Charles T. Vance

Name typed or printed: Charles T. Vance, PE & LS

Date: 9 Sept. 1995 Reg. No. 5041

My registration renewal date is December 31, 19 95



List Corners to be Indexed

Corners Section Twp Range
SE. COR., SW 1/4 SW 1/4 15-75-28

COMPUTER RECORDED COMPARED

FILED NO. 818

BOOK 1 PAGE 309

95 SEP 21 PM 3:42

REC \$ 500
AUD \$
R.M.F. \$ 100

MICHELLE UTSLER
RECORDER
MADISON COUNTY, IOWA