

UNITED STATES PUBLIC LAND SURVEY CORNER CERTIFICATE

95-1155

OF

Land Survey Monuments situated in Section 33, Township 76 North, Range 27 West, of the Fifth Principal Meridian, Madison County, Iowa. Previously recorded in N/A in County Recorder's Office.

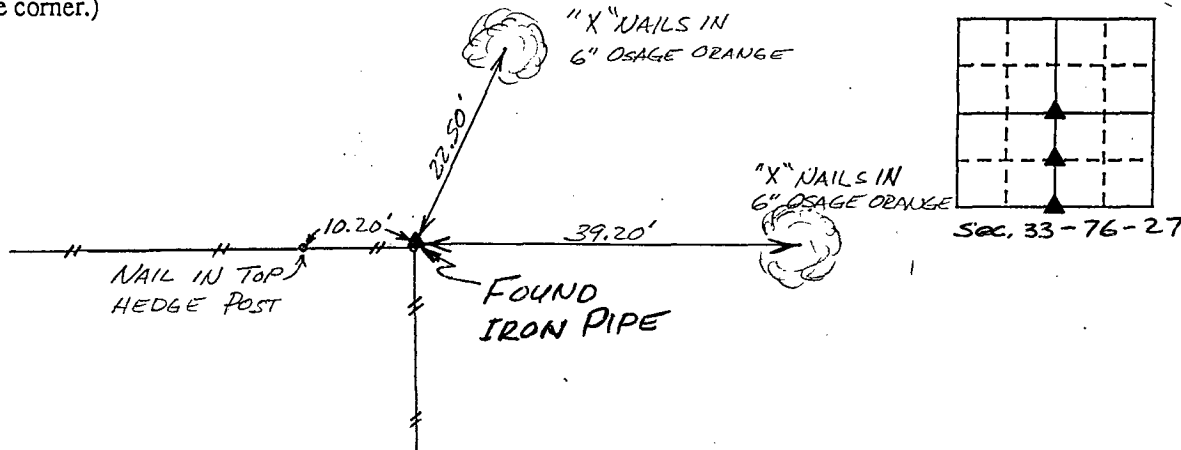
(book, page, document number, etc.)

(Show reason for preparing this certificate, the evidence and detailed procedures used in establishing the corner positions and monumentation found or placed.)

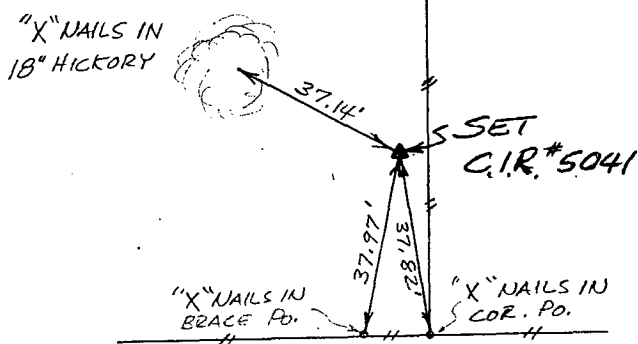
Monument Description and Remarks: Corner monuments were found and set as shown below -

PLAN - VIEW

(Show a minimum of three reference ties to durable physical objects, relevant monuments and physical conditions that will enable recovery of the corner.)

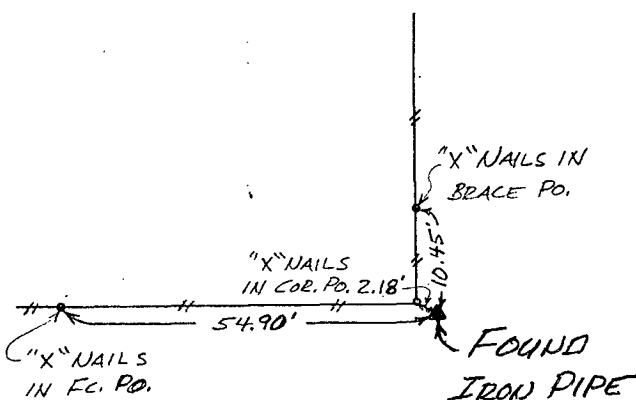


Ref. to CENTER COR., SECTION 33, T 76N, R 27W.



Ref. to NW. COR., SW. 1/4 SE. 1/4,

SECTION 33, T 76N, R 27W.



Ref. to S. 1/4 COR.

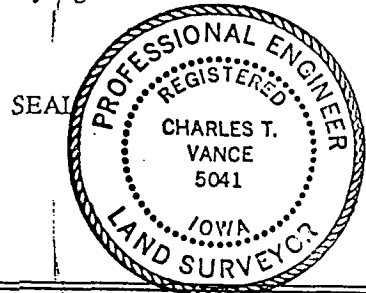
SECTION 33, T 76N, R 27W.

I hereby certify that the survey work was completed and this land surveying document was prepared by me or under my direct personal supervision and that I am a duly registered land surveyor under the laws of the state of Iowa

Signature: Charles T. Vance  
Name typed or printed: Charles T. Vance, PE & LS

Date: 18 August 1995 Reg. No. 5041

My registration renewal date is December 31, 1995



Corners	Section	Twp	Range
CENTER	33	76	27
NW. COR.			
SW. 1/4 SE. 1/4	33	76	27
S. 1/4 COR.	33	76	27

CHECKED   
FORWARDED   
INDEXED

REC \$ 5.00

R.M.F. \$ 7.00

FILED NO. 508

BOOK 1 PAGE 308

95 AUG 24 AM 11:00

MICHELLE UTSLI  
RECORDER  
MADISON COUNTY, IOWA