

UNITED STATES PUBLIC LAND SURVEY CORNER CERTIFICATE

95-1155

OF

Land Survey Monuments situated in Section 4, Township 75 North, Range 27 West, of the Fifth Principal Meridian, Madison County, Iowa. Previously recorded in N/A in County Recorder's Office.

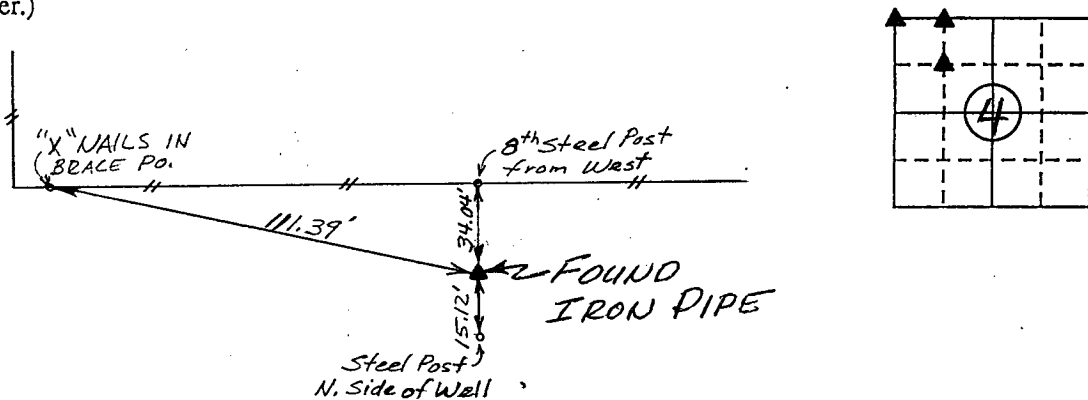
(book, page, document number, etc.)

(Show reason for preparing this certificate, the evidence and detailed procedures used in establishing the corner positions and monumentation found or placed.)

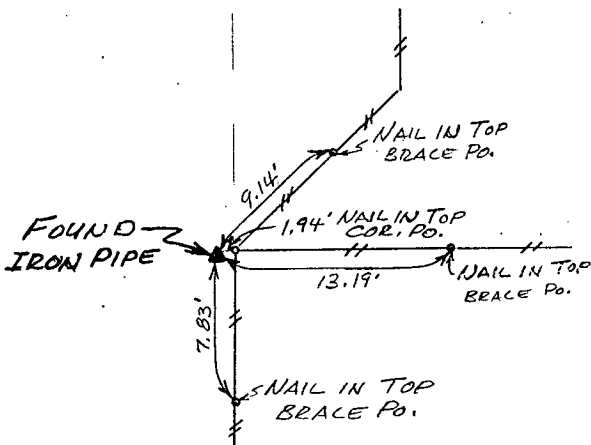
Monument Description and Remarks: Corner Monuments were found or set as shown below

PLAN - VIEW

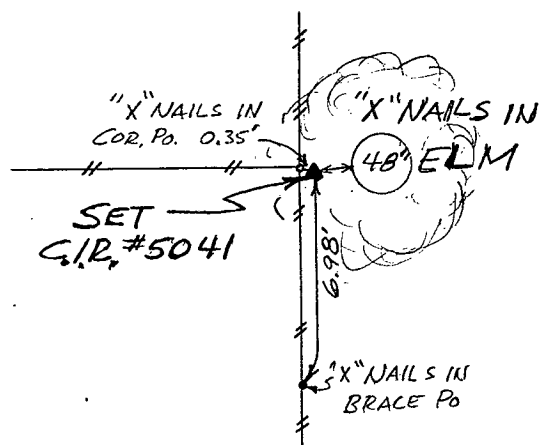
(Show a minimum of three reference ties to durable physical objects, relevant monuments and physical conditions that will enable recovery of the corner.)



Ref. to NW. Cor., SECTION 4, T75N, R27W.



Ref. to NW. Cor., NE. fr. 1/4 NW. 1/4, SECTION 4, T75N, R27W.



Ref. to SW. Cor., NE. fr. 1/4 NW. 1/4 SECTION 4, T75N, R27W.

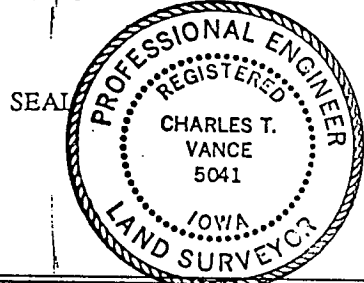
I hereby certify that the survey work was completed and this land surveying document was prepared by me or under my direct personal supervision and that I am a duly registered land surveyor under the laws of the state of Iowa

Signature: Charles T. Vance

Name typed or printed: Charles T. Vance, PE & LS

Date: 21 August 1995 Reg. No. 5041

My registration renewal date is December 31, 1995



CORNER
 FOUND
 SET

List Corners to be Indexed

Corners	Section	Twp	Range
NW. COR.	4	75	27
NW. COR NE. 1/4 NW. 1/4	4	75	27
SW. COR NE. 1/4 NW. 1/4	4	75	27

FILED NO. 507

BOOK 1 PAGE 307

95 AUG 24 AM 10:59

MICHELLE UTSLER
RECORDER
MADISON COUNTY, IOWA

REC \$ 5.00

R.M.F. \$ 1.00