

UNITED STATES PUBLIC LAND SURVEY CORNER CERTIFICATE

OF

Land Survey Monuments situated in Section 30, Township 77 N, Range 27 W, of the Fifth Principal Meridian, Madison County, Iowa.
 Previously recorded in N. A. in County Recorder's Office.

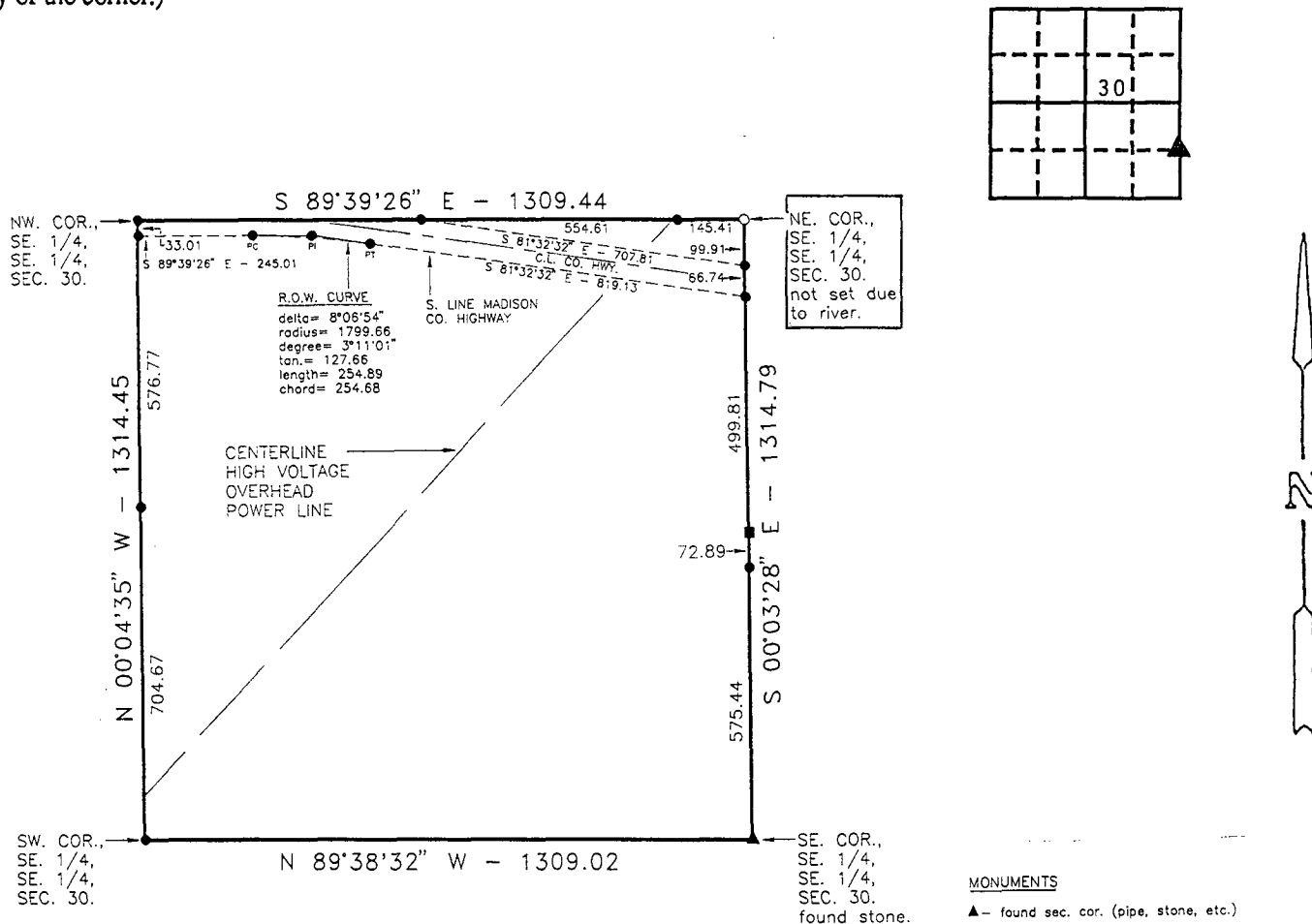
(book, page, document number, etc.)

(Show reason for preparing this certificate, the evidence and detailed procedures used in establishing the corner positions and monumentation found or placed.)

Monument Description and Remarks: Set 5/8" capped rebar, #7995, offset monuments to Section corner due to position falling in North Branch North River. Section corner position based on mid point between east quarter corner and southeast corner of Section.

PLAN - VIEW

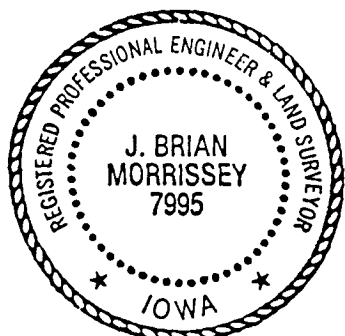
(Show a minimum of three reference ties to durable physical objects, relevant monuments and physical conditions that will enable recovery of the corner.)



- MONUMENTS**
- ▲ - found sec. cor. (pipe, stone, etc.)
 - - set - 5/8" rebar with cap R.L.S. 7995
 - - no monument found or set
 - - found 5/8" capped rebar, #7995

I hereby certify that the survey work was completed and this certificate was prepared by me or under my direct personal supervision and that I am a duly registered land surveyor under the laws of the state of Iowa. My registration renewal date is 12/31/95.

Signature: J. Brian Morrissey
 Name typed or printed: J. Brian Morrissey
 Date: Aug. 16, 1995 Reg. No. 7995



SEAL

List Corners to be Indexed			
Corners	Section	Twp	Range
NE., SE. 1/4, SE. 1/4	30	77N	27W

REC \$ 500
 AUD \$ 100
 R.M.F. \$ 100

FILED NO. 439

BOOK 1 PAGE 305

95 AUG 17 AM 11:09

MICHELLE UTSLER
 RECORDER
 MADISON COUNTY, IOWA

COMPUTER
 RECORDED
 COMPARED