

UNITED STATES PUBLIC LAND SURVEY CORNER CERTIFICATE

OF

Land Survey Monuments situated in Section 29, Township 76 North, Range 27 West, of the Fifth Principal Meridian, MADISON County, Iowa. Previously recorded in _____ in County Recorder's Office.

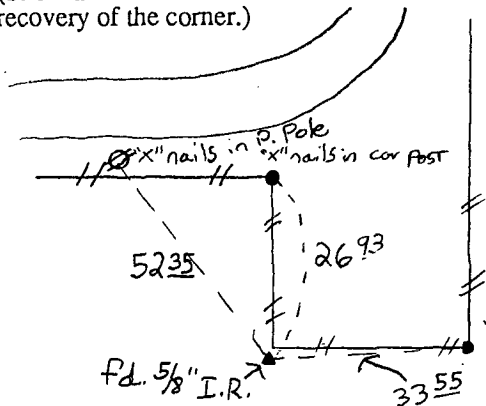
(book, page, document number, etc.)

(Show reason for preparing this certificate, the evidence and detailed procedures used in establishing the corner positions and monumentation found or placed.)

Monument Description and Remarks: E 1/4 Cor. - Found 5/8" Iron Rod from ties in County Engineers Office. Used by Vance & Hochstetler for Survey in 1981.
N 1/4 Corner - Found 1/2" Iron Pipe from ties in County Engineers Office; County Ties noted to be from Bishop Survey.
NE Corner SE 1/4 NE 1/4 - Set CIR #6808 at Midpoint on line between NE Cor and E 1/4 Cor of Section 29.

PLAN - VIEW

(Show a minimum of three reference ties to durable physical objects, relevant monuments and physical conditions that will enable recovery of the corner.)

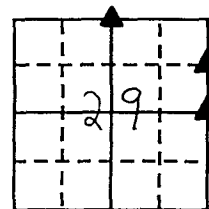


FILED NO. **1511**

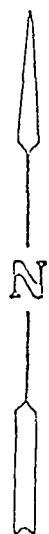
BOOK 1 PAGE 318

95 NOV 29 PM 3: 31

MICHELLE UTSLER
RECORDER
MADISON COUNTY, IOWA

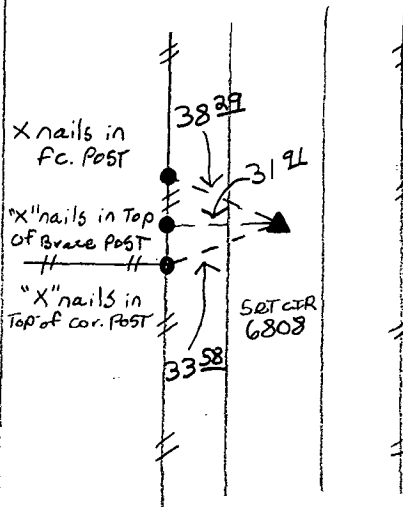
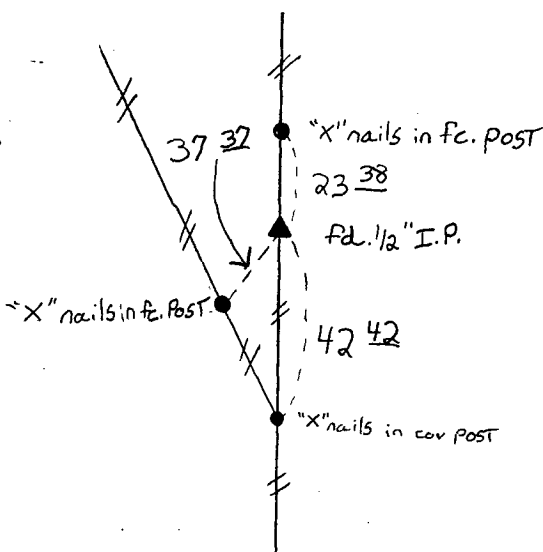


CO.
RECORDED
COUNTY



Ref. to E. 1/4 cor. sec. 29-76-27

REC \$ 5.00
AUDS _____
R.M.F. \$ 1.00



Ref. to N. 1/4 cor sec. 29-76-27

Ref. to N.E. cor. S.E. 1/4 N.E. 1/4 sec. 29-76-27

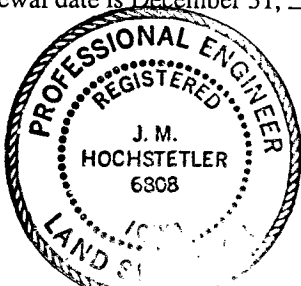
I hereby certify that the survey work was completed and this land surveying document was prepared by me or under my direct personal supervision and that I am a duly registered land surveyor under the laws of the state of Iowa

Signature: J. M. Hochstetler
Name typed or printed: J. M. Hochstetler

Date: 11/28/95 Reg. No. 6808

My registration renewal date is December 31, 1998

SEAL



List Corners to be Indexed

Corners	Section	Twp	Range
E 1/4 cor.	29	76	27
N 1/4 cor.	29	76	27
N.E. cor. S.E. 1/4 N.E. 1/4	29	76	27