

UNITED STATES PUBLIC LAND SURVEY CORNER CERTIFICATE

OF

Land Survey Monuments situated in Section 13, Township 77 North, Range 29 West, of the Fifth Principal Meridian, Madison County, Iowa. Previously recorded in N/A in County Recorder's Office.

(Show reason for preparing this certificate, the evidence and detailed procedures used in establishing the corner positions and monumentation found or placed.)

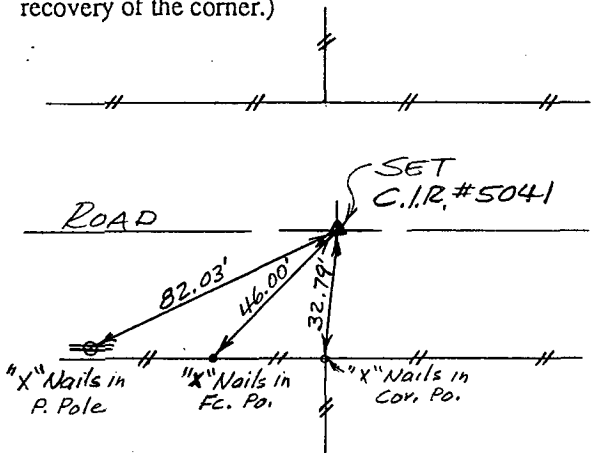
Monument Description and Remarks: Set and Found Monuments as shown on sketch Below. **1510**

| | |
|-----------------------|-------------------------------|
| REC \$ <u>5.00</u> | FILED NO. _____ |
| AUD \$ _____ | BOOK <u>1</u> PAGE <u>317</u> |
| R.M.F. \$ <u>1.00</u> | 95 NOV 29 PM 3:26 |

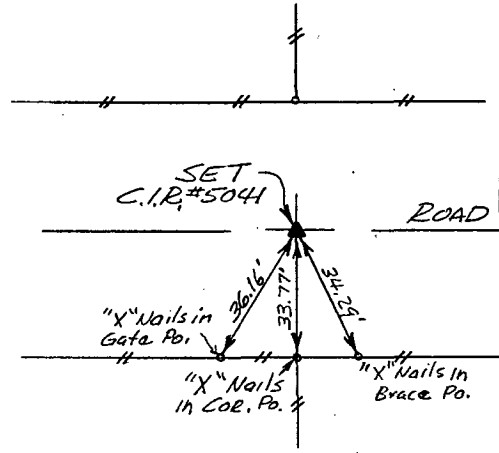
MICHELLE HITSLER
RECORDER
MADISON COUNTY, IOWA

PLAN - VIEW

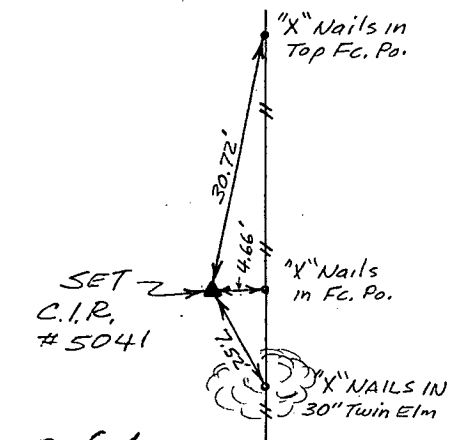
(Show a minimum of three reference ties to durable physical objects, relevant monuments and physical conditions that will enable recovery of the corner.)



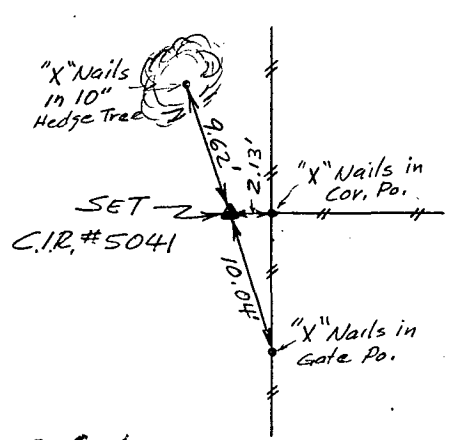
Ref. to NW COR., NE 1/4 NW 1/4 SECTION 13, T77N, R29W.



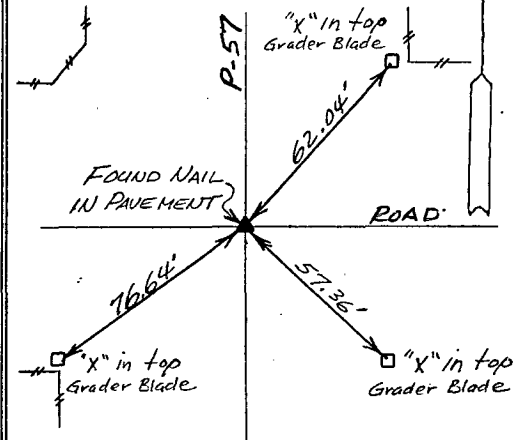
Ref. to N 1/4 COR., SEC. 13, T77N, R 29W



Ref. to SW COR., NE 1/4 NW 1/4 SEC. 13, T77N, R29W



Ref. to SE COR., NE 1/4 NW 1/4 SEC. 13, T77N, R29W



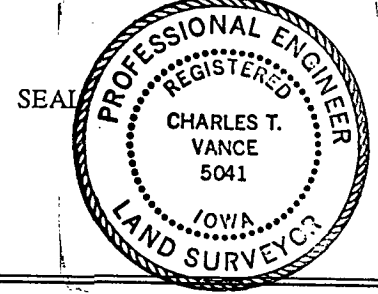
Ref. to NE COR., SECTION 13, T77N, R29W

I hereby certify that the survey work was completed and this land surveying document was prepared by me or under my direct personal supervision and that I am a duly registered land surveyor under the laws of the state of Iowa

Signature: Charles T. Vance
Name typed or printed: Charles T. Vance, PE & LS

Date: 16 Nov. 1995 Reg. No. 5041

My registration renewal date is December 31, 19 95



| Corners | Section | Twp | Range |
|---------------|---------|-----|-------|
| NW COR. | 13 | 77 | 29 |
| NE 1/4 NW 1/4 | 13 | 77 | 29 |
| N 1/4 COR. | 13 | 77 | 29 |
| SW COR. | 13 | 77 | 29 |
| NE 1/4 NW 1/4 | 13 | 77 | 29 |
| SE COR. | 13 | 77 | 29 |
| NE 1/4 NW 1/4 | 13 | 77 | 29 |
| NE COR. | 13 | 77 | 29 |