

# UNITED STATES PUBLIC LAND SURVEY CORNER CERTIFICATE

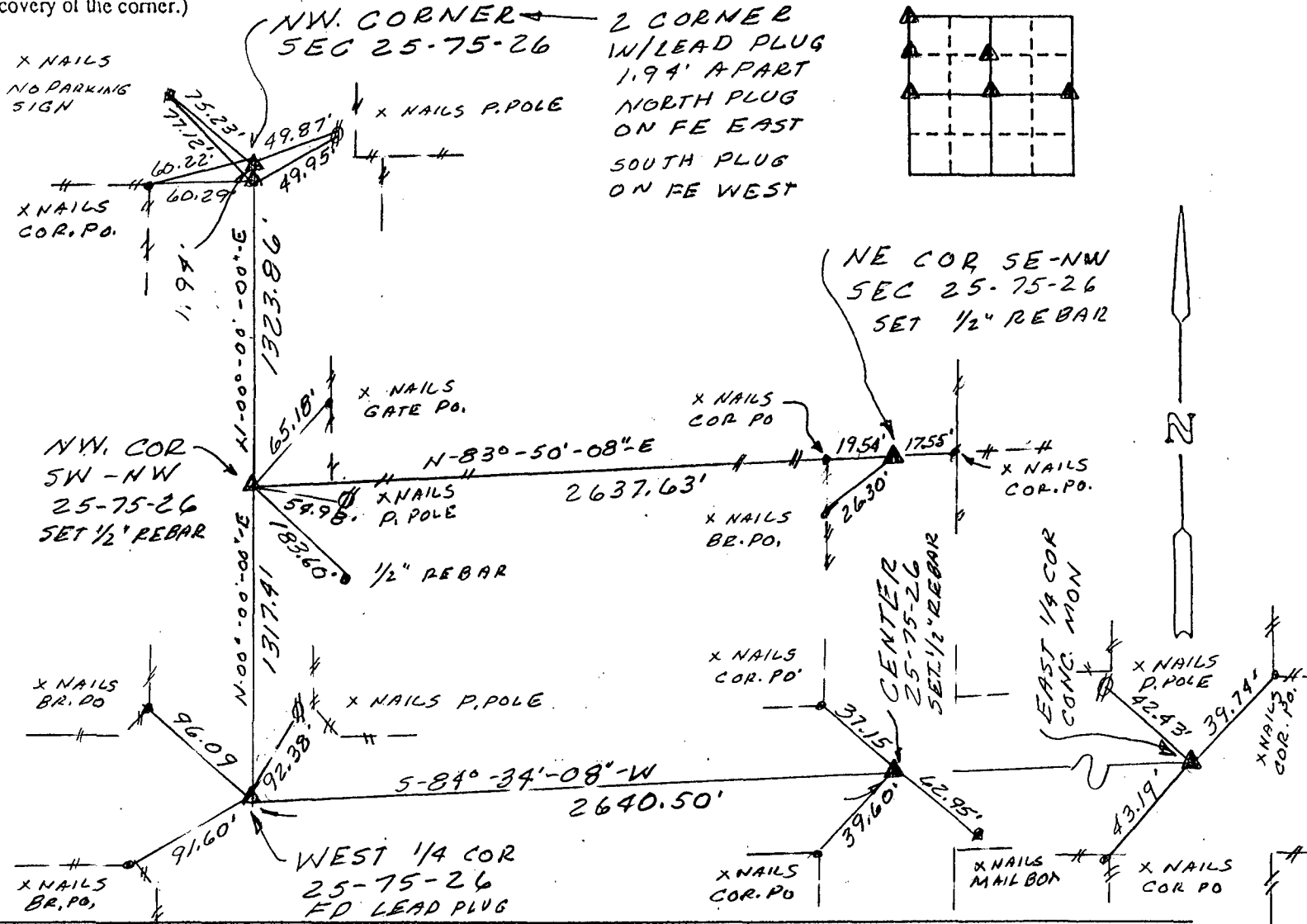
OF

and Survey Monuments situated in Section 25, Township 75, Range 26, of the Fifth Principal Meridian, MADISON County, Iowa. Previously recorded in \_\_\_\_\_ in County Recorder's Office.

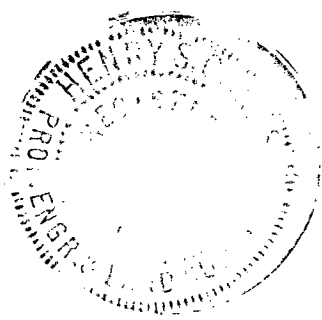
(book, page, document number, etc.)  
Show reason for preparing this certificate, the evidence and detailed procedures used in establishing the corner positions and monumentation found or placed.)

Monument Description and Remarks: NW CORNER FOUND 2 CORNER (LEAD PLUG) 1.94' APART NORTH LEAD PLUG FOREAST SIDE & SOUTH FOR WEST ≡ NW COR SW-NW SET 1/2" REBAR W/CAC# 3321 ON LINE AND FENCE LINE EAST ≡ WEST 1/4 COR FOUND LEAD PLUG ≡ CTR - SET 1/2" REBAR USING PI. OF ROADWAYS ≡ EAST 1/4 COR FOUND CONC MON 14" DEEP SET SPIKE ON TOP ≡ NE COR SE-NW SET 1/2" REBAR W/CAP # 3321 USING E-W FENCE LINE AND CENTER OF ROAD.  
**PLAN - VIEW**

Show a minimum of three reference ties to durable physical objects, relevant monuments and physical conditions that will enable recovery of the corner.)



I hereby certify that the survey work was completed and this certificate was prepared by me or under my direct personal supervision and that I am a duly registered land surveyor under the laws of the state of Iowa.  
Signature: Henry S. Oakes  
Name typed or printed: HENRY S. OAKES  
Date: 11-27-95 Reg. No. 3321



List Corners to be Indexed			
Corners	Section	Twp	Range
NW	25	75	26
NW COR SW-NW	25	75	26
W 1/4	25	75	26
CTR	25	75	26
E 1/4	25	75	26
NE COR SE-NW	25	75	26

REC 500  
100

SEAL