

REC'D 5⁰⁰
AUD'S _____
F.M.F.S. 1⁰⁰

COMPUTER
RECORDED
COMPARED

MICHELLE UTSLER
RECORDER
MADISON COUNTY, IOWA

RETURN TO : BOLDMAN LAND SURVEYING, P.C., BOX 66, WINTERSSET, IA 50273 515-462-9242

UNITED STATES PUBLIC LAND SURVEY CORNER CERTIFICATE
OF

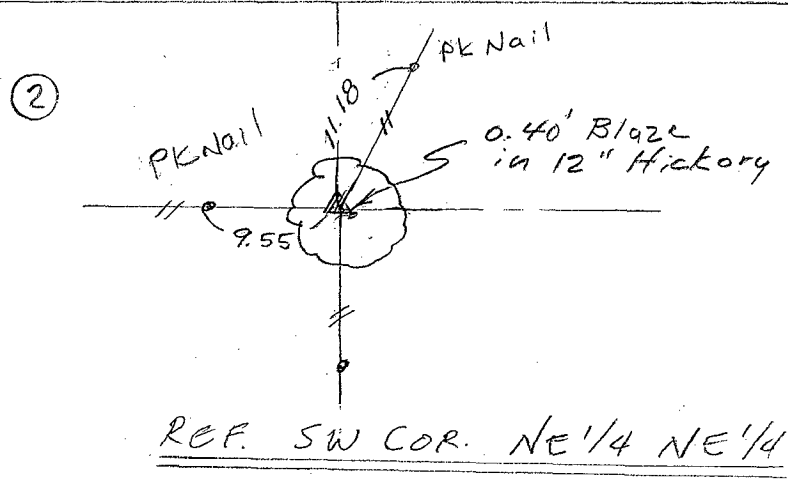
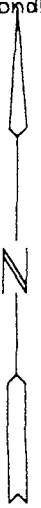
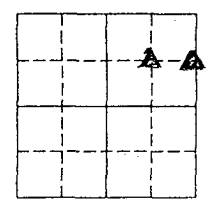
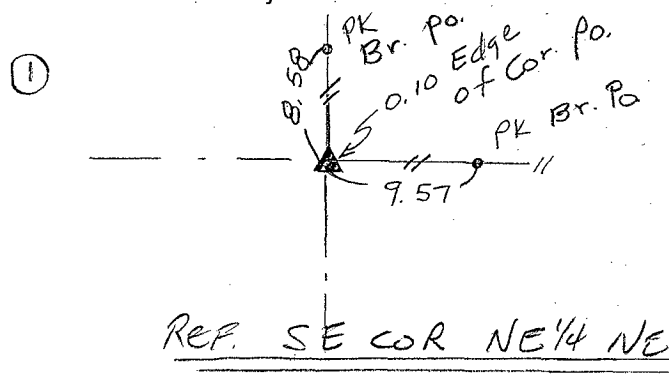
Land Survey Monuments situated in Section 7, Township 74N, Range 27W, of the Fifth Principal Meridian, Madison County, Iowa
Previously recorded in None In County Recorder's Office.
(book, page, document number, etc.)

(Show reason for preparing this certificate, the evidence and detailed procedures used in establishing the corner positions and monumentation found or placed.)

Monument Description and Remarks: ① Set 5/8" rebar w/cap 13427 West edge of cor. post. ② Set 5/8" rebar w/cap 13427 inter. of fences south and west.

PLAN-VIEW

(Show a minimum of three reference ties to durable physical objects, relevant monuments and physical conditions that will enable recovery of the corner.)



I hereby certify that the survey work was completed and this certificate was prepared by me or under my direct personal supervision and that I am a duly Licensed Land Surveyor under the laws of the State of Iowa

Signature: Craig S. Boldman
Craig S. Boldman

Date: 5-12-2000 Reg. No. 13427

List Corners to be Indexed

Corners	Section	Twp	Range
SE COR	7	74N	27W
NE 1/4 NE 1/4			
SW COR	7	74N	27W
NE 1/4 NE 1/4			

SEAL

