

REC \$ 5⁰⁰
 ADD \$
 I.M.F. \$ 1⁰⁰

COMPUTER ✓
 RECORDED ✓
 COMPARED ✓

FILED NO. 004182

BOOK 2 PAGE 150

2000 MAY -9 AM 10: 03

SHELLE UTSLER
 RECORDER
 MADISON COUNTY, IOWA

RETURN TO : BOLDMAN LAND SURVEYING, P.C., BOX 66, WINTERSET, IA 50273 515-462-9242

UNITED STATES PUBLIC LAND SURVEY CORNER CERTIFICATE

OF

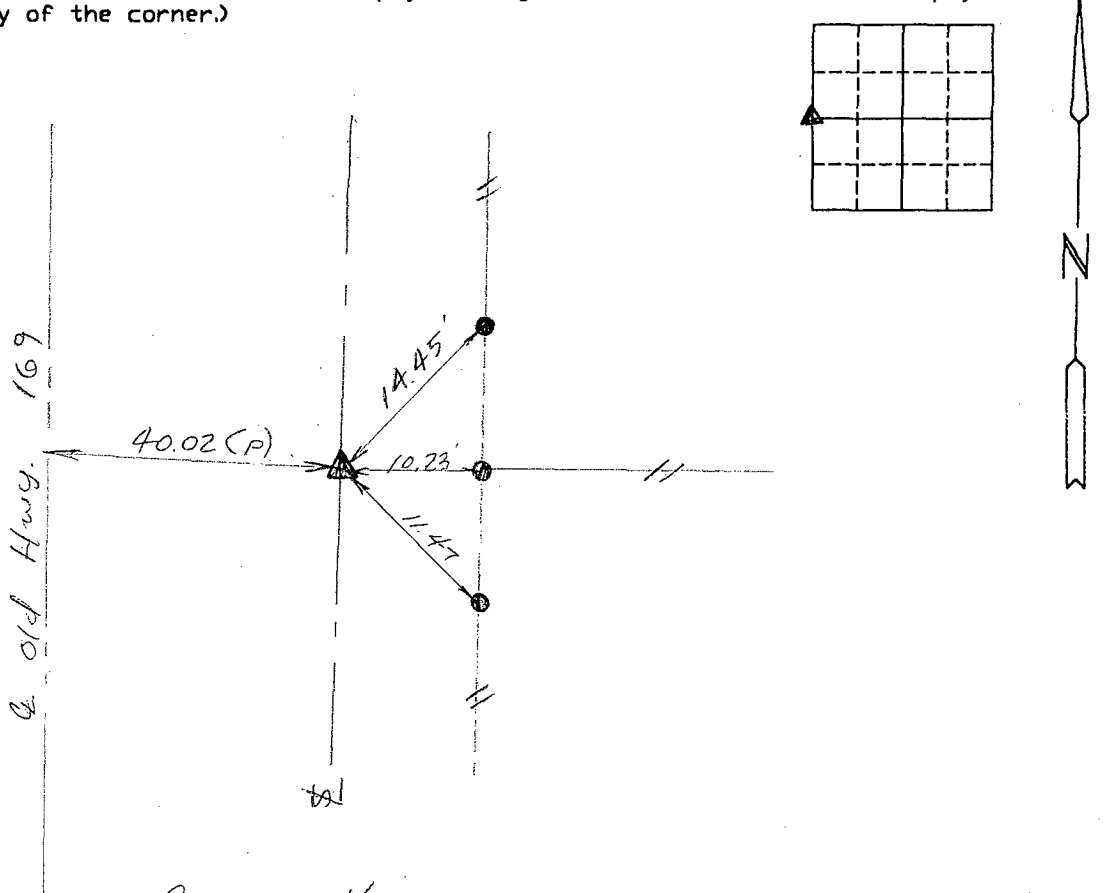
Land Survey Monuments situated in Section 6, Township 74 N., Range 27 W., of the Fifth Principal Meridian, Madison County, Iowa
 Previously recorded in None In County Recorder's Office.
 (book, page, document number, etc.)

(show reason for preparing this certificate, the evidence and detailed procedures used in establishing the corner positions and monumentation found or placed.)

Monument Description and Remarks: Set 5/8" rebar w cap # 13427 using information from D.O.T. plans.

PLAN-VIEW

(Show a minimum of three reference ties to durable physical objects, relevant monuments and physical conditions that will enable recovery of the corner.)



REF. W 1/4 COR. SEC. 6-74-27

I hereby certify that the survey work was completed and this certificate was prepared by me or under my direct personal supervision and that I am a duly Licensed Land Surveyor under the laws of the State of Iowa

Signature: Craig S. Boldman
 Craig S. Boldman

Date: 5-7-2000 Reg. No. 13427

List Corners to be Indexed

Corners	Section	Twp	Range
W 1/4	6	74	27

SEAL

