

MICHELLE UTSLER
RECORDER
MADISON COUNTY, IOWA

REC'D 5⁰⁰
AUD'S
R.M.F.'S 10

COMPUTER
RECORDED
COMPARED

Nortline Franklin Norton

425 9th Street • Carlisle, IA 50047 • (515) 989-3677

Surveyors

**UNITED STATES PUBLIC LAND SURVEY CORNER CERTIFICATE
OF**

Land Survey Monuments situated in Section 21, Township 77, Range 26 West, of the Fifth Principal Meridian, MADISON County, Iowa.
Previously recorded in N/A in County Recorder's Office.
(book, page, document number, etc.)

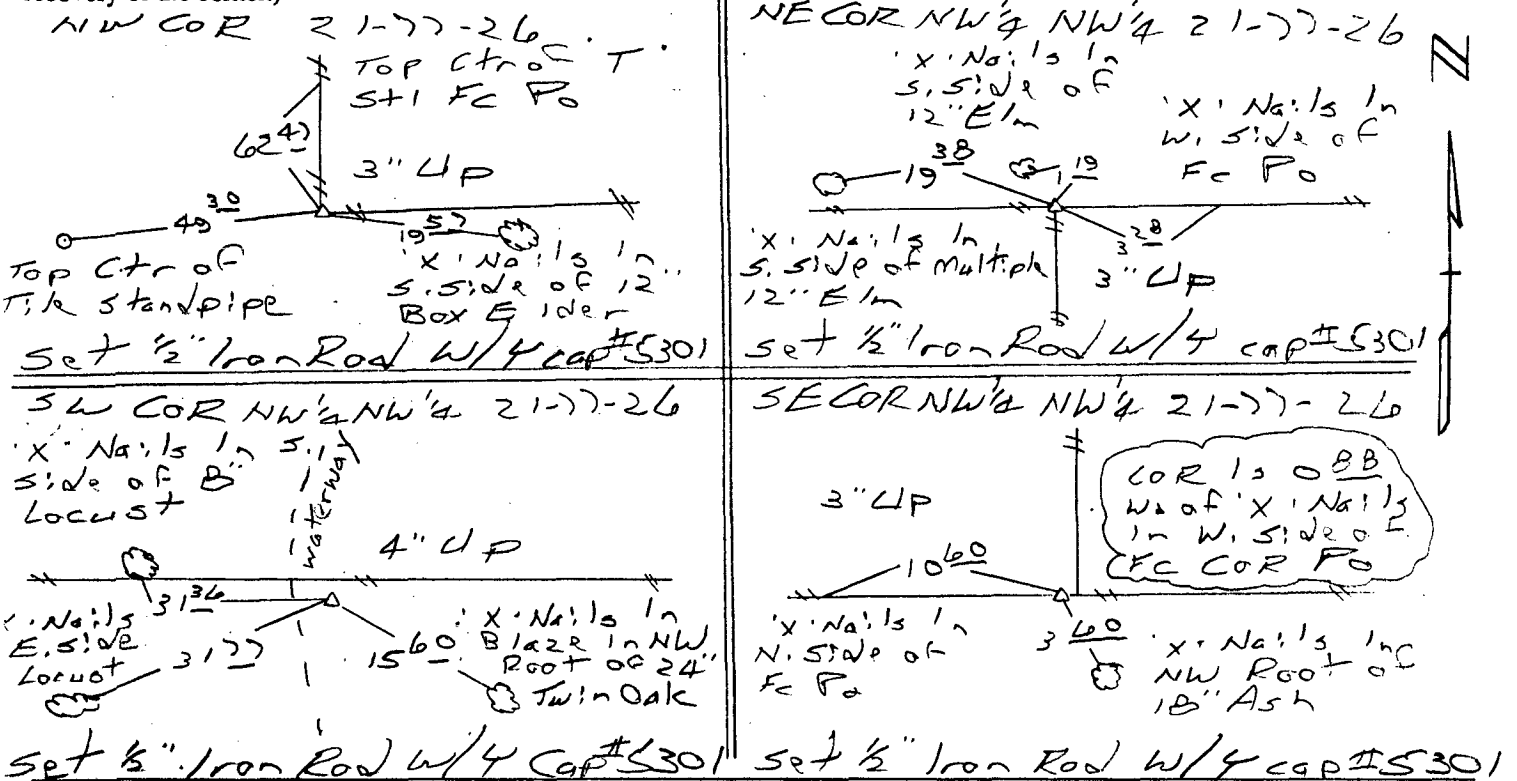
(Show reason for preparing this certificate, the evidence and detailed procedures used in establishing the corner positions and monumentation found or placed.)

Monument Description and Remarks:

NW COR - Searched for but could not find - Accepted
boundary fence corner.
NE COR NW 1/4 NW 1/4, SE COR NW 1/4 NW 1/4 - Accepted
boundary fence corner.
SW COR NW 1/4 NW 1/4 - Accepted old FC cor post.

PLAN - VIEW

(Show a minimum of three reference ties to durable physical objects, relevant monuments and physical conditions that will enable recovery of the corner.)



I hereby certify that the survey work was completed and this land surveying document was prepared by me or under my direct personal supervision and that I am a duly licensed Land Surveyor under the laws of the state of Iowa.

Signature: Franklin A. Norton
Name typed or printed: FRANKLIN A. NORTON

Date: 4-28-00 Lisc. No. 5301

My license renewal date is December 31, 2000

List Corners to be Indexed

Corners	Section	Twp	Range
NW COR	21	77	26
NE COR, NW 1/4 NW 1/4	21	77	26
SE COR NW 1/4 NW 1/4	21	77	26
SW COR NW 1/4 NW 1/4	21	77	26

