

REGS 5⁰⁰
AUDS
R.M.F.S. 00

COMPUTER ✓
RECORDED ✓
COMPARED ✓

Nortline Franklin Norton 425 9th Street • Carlisle, IA 50047 • (515) 989-3677

Surveyors

UNITED STATES PUBLIC LAND SURVEY CORNER CERTIFICATE
OF

Land Survey Monuments situated in Section 17, Township 77, Range 26 West, of the Fifth Principal Meridian, MADISON County, Iowa. Previously recorded in N/A in County Recorder's Office.

(book, page, document number, etc.)

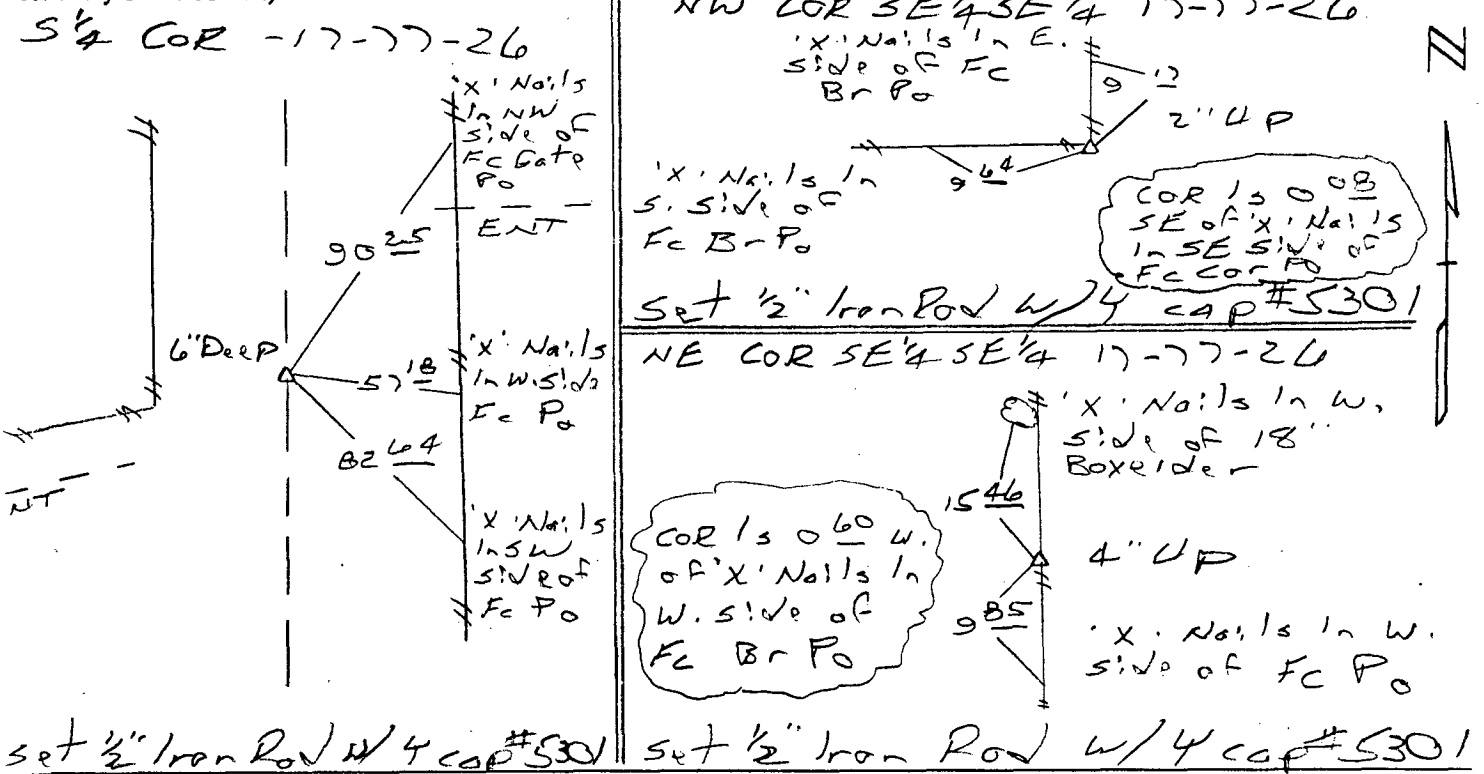
(Show reason for preparing this certificate, the evidence and detailed procedures used in establishing the corner positions and monumentation found or placed.)

Monument Description and Remarks:

S 1/4 COR - County Engineer's records did not indicate any monument existed. Accepted Road centerline & boundary fence West.
NW COR SE 1/4 SE 1/4 - Accepted boundary fence corner.
NE COR SE 1/4 SE 1/4 - Accepted old fence corner.

PLAN - VIEW

(Show a minimum of three reference ties to durable physical objects, relevant monuments and physical conditions that will enable recovery of the corner.)



I hereby certify that the survey work was completed and this land surveying document was prepared by me or under my direct personal supervision and that I am a duly licensed Land Surveyor under the laws of the state of Iowa.

Signature: Franklin A. Norton
Name typed or printed: FRANKLIN A. NORTON

Date: 4-28-00 Lisc. No. 5301

My license renewal date is December 31, 2000

Corners	Section	Twp	Range
S 1/4 COR	17	77	26
NW COR SE 1/4 SE 1/4	17	77	26
NE COR SE 1/4 SE 1/4	17	77	26

