

FILED NO. 004115

BOOK 2 PAGE 147

2000 MAY -3 PM 3:48

MICHELLE UTSLER
RECORDER
MADISON COUNTY, IOWA

REC'D 5th
AUG 1st
R.M.F.S. 1st

COMPUTER
RECORDED
COMPARED

✓ VANCE & HOCHSTETLER, P.C., CONSULTING ENGINEERS, WINTERSET, IOWA (515) 462-3995
CHARLES T. VANCE, 110 West Green St., Winterset, Iowa, 50273
JAMES M HOCHSTETLER, 110 West Green St., Winterset, Iowa 50273

UNITED STATES PUBLIC LAND SURVEY CORNER CERTIFICATE

Land Survey Monuments situated in Section 7 OF 7 Township 75 North, Range 26 West, of the Fifth Principal Meridian, MADISON County, Iowa.
Previously recorded in _____ in County Recorder's Office.
(book, page, document number, etc.)

(Show reason for preparing this certificate, the evidence and detailed procedures used in establishing the the corner positions and monumentation found or placed.)

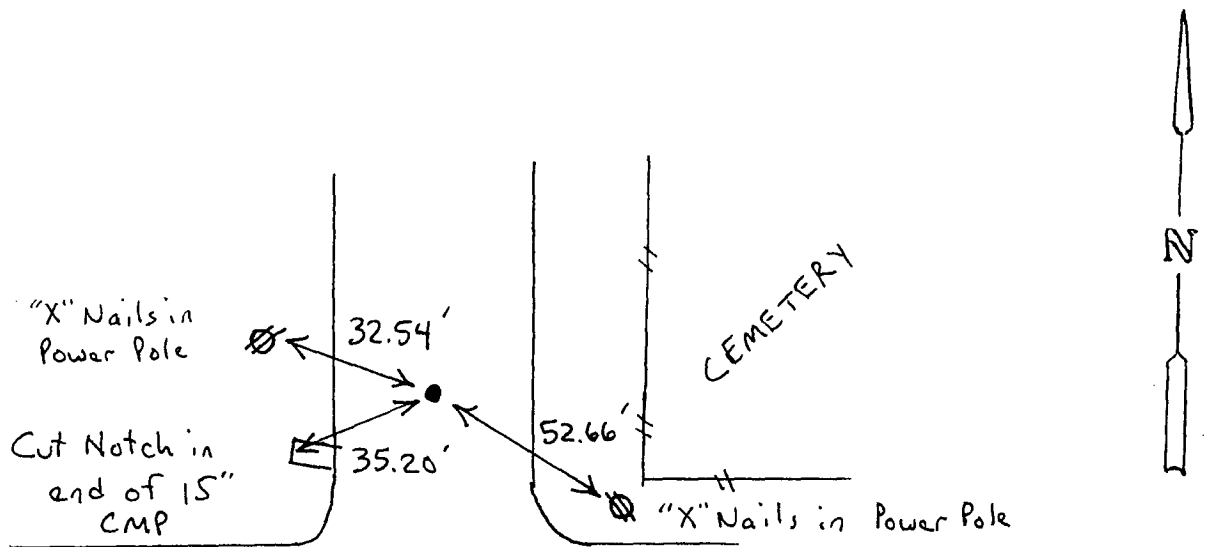
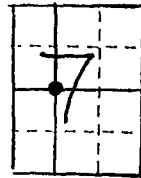
Monument Description and Remarks:

Center - Fd. 5/8" Iron Rod 2" deep in roadway. Pin originally located & shown on a 1977 plat for the Trustees of South Township (cemetery survey) located in the SW. 1/4 of the NE. 1/4. Pin is approximately 41.4' North of the projection of the North R.O.W. Fence coming from the East.

PLAN - VIEW

(Show a minimum of three reference ties to durable physical objects, relevant monuments and physical conditions that will enable recovery of the corner.)

CENTER
SEC. 7-75N-26W
Fd. 5/8" Iron Rod



List Corners to be Indexed

Corners	Section	Twp	Range
Center	7	75N	26W

I hereby certify that this land surveying document was prepared and the related survey work was performed by me or under my direct personal supervision and that I am a duly licensed Land Surveyor under the laws of the State of Iowa.

J.M. Hochstetler
J.M. HOCHSTETLER

License number 6808 Date 5/1/2000

My license renewal date is December 31, 2001

Pages or sheets covered by this seal: 1

