

OF

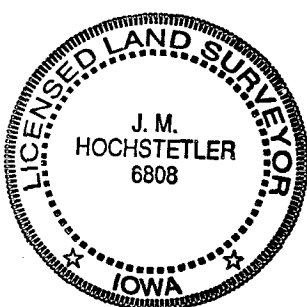
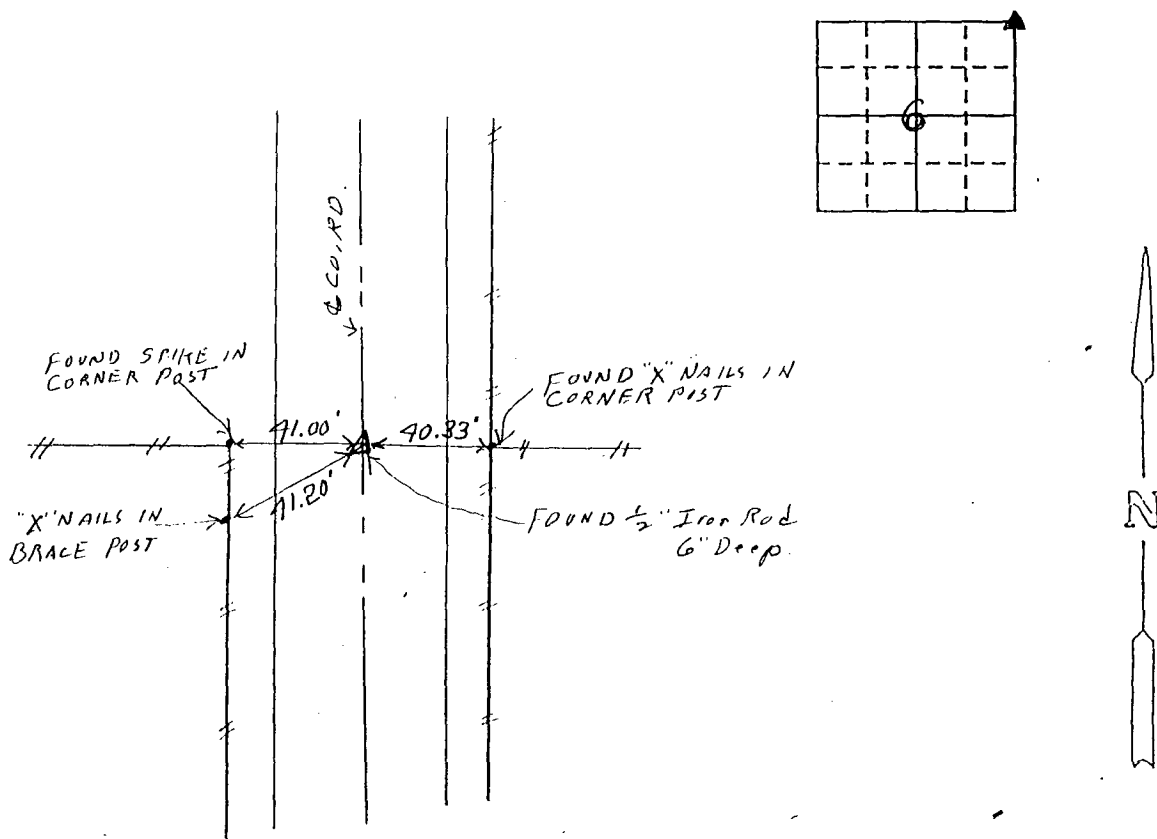
Land Survey Monuments situated in Section 6, Township 77 N, Range 29 W, of the Fifth Principal Meridian, MADISON County, Iowa.
 Previously recorded in _____ in County Recorder's Office.
(book, page, document number, etc.)

(Show reason for preparing this certificate, the evidence and detailed procedures used in establishing the corner positions and monumentation found or placed.)

Monument Description and Remarks: Found 1/2" IRON ROD at approximately E County Road - 6" Deep. Found and used by Sparks (Iowa DOT) in 1957 and relocated by Dallas County Engineer in 1990. Found ties in corner posts on each side of road which appear to be ties by Dallas County Engineer's crew in 1990. Madison County Engineer's records indicate Sparks (Iowa DOT) lowered stone and placed Concrete Monument over. Dallas County records indicate WPA Monu. with Iron Pin over.

PLAN - VIEW

(Show a minimum of three reference ties to durable physical objects, relevant monuments and physical conditions that will enable recovery of the corner.)



I hereby certify that this land surveying document was prepared and the related survey work was performed by me or under my direct personal supervision and that I am a duly licensed Land Surveyor under the laws of the State of Iowa.
J.M. Hochstetler
 J. M. HOCHSTETLER
 License number 6808 Date 4/17/2000
 My license renewal date is December 31, 2001
 Pages or sheets covered by this seal: 1

Corners	Section	Twp	Range
NE COR.	6	77 N	29 W

RECS. 5⁰⁰
 A.D.S. _____
 R.M.F.S. 1⁰⁰

FILED NO. 004022
 BOOK 2 PAGE 146
 2000 APR 26 PM 12:51

COMPUTER
 RECORDED
 COMPARED

MICHELLE UTSLER
 RECORDER
 MADISON COUNTY, IOWA