

FILED NO. 003479

BOOK 2 PAGE 139

2000 MAR 20 PM 2:50

MICHELLE UTSLER
RECORDER
MADISON COUNTY, IOWA

REC \$ 5.00
AUD \$ _____
R.M.F. \$ 1.00

COMPUTER
RECORDED
COMPARED

RETURN TO : BOLDMAN LAND SURVEYING, P.C., BOX 66, WINTERSSET, IA 50273 515-462-9242

UNITED STATES PUBLIC LAND SURVEY CORNER CERTIFICATE

OF

Land Survey Monuments situated in Section 26, Township 77, Range 27, of the Fifth Principal Meridian, Madison County, Iowa
Previously recorded in None In County Recorder's Office.
(book, page, document number, etc.)

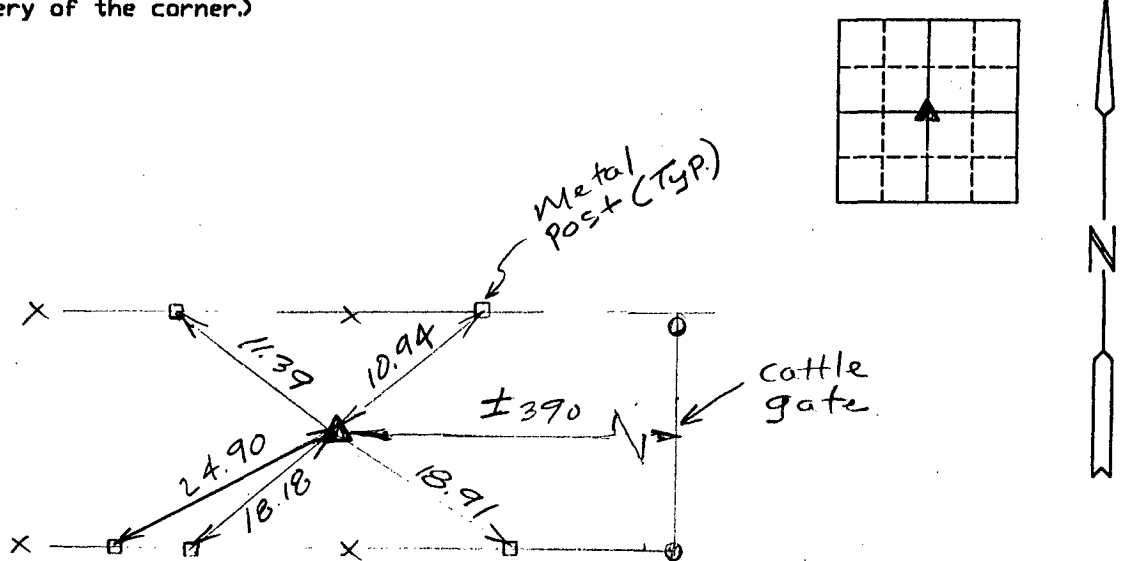
(show reason for preparing this certificate, the evidence and detailed procedures used in establishing the corner positions and monumentation found or placed.)

Monument Description and Remarks: Set 5/8" capped rebar using recorded monuments and re-tracing the east-west center line of section according to Co. Surveyor's notes.

PLAN-VIEW

(Show a minimum of three reference ties to durable physical objects, relevant monuments and physical conditions that will enable recovery of the corner.)

①



I hereby certify that the survey work was completed and this certificate was prepared by me or under my direct personal supervision and that I am a duly Licensed Land Surveyor under the laws of the State of Iowa

Signature: Craig S. Boldman
Craig S. Boldman

Date: 3/20/00 Reg. No. 13427

List Corners to be Indexed

Corners	Section	Twp	Range
Center	26	77	27

SEAL

